



**SIMBIOTIC PROJECT KICK-OFF MEETING
UNIVERSITY OF MALTA, MSIDA, MALTA
26/05/2011 – 27/05/2011**

Day 1

TOPIC 4 Landscape Assessment

Elisabeth Conrad

Lecturer - Institute of Earth Systems, University of Malta



Italia-Malta Programme - Cohesion Policy 2007-2013
A sea of opportunities for the future

This project is part-financed by the European Union
European Regional Development Fund (ERDF)
Co-financing rate: 85% EU Funds; 15% National Funds



Investing in your future

BIONOTE

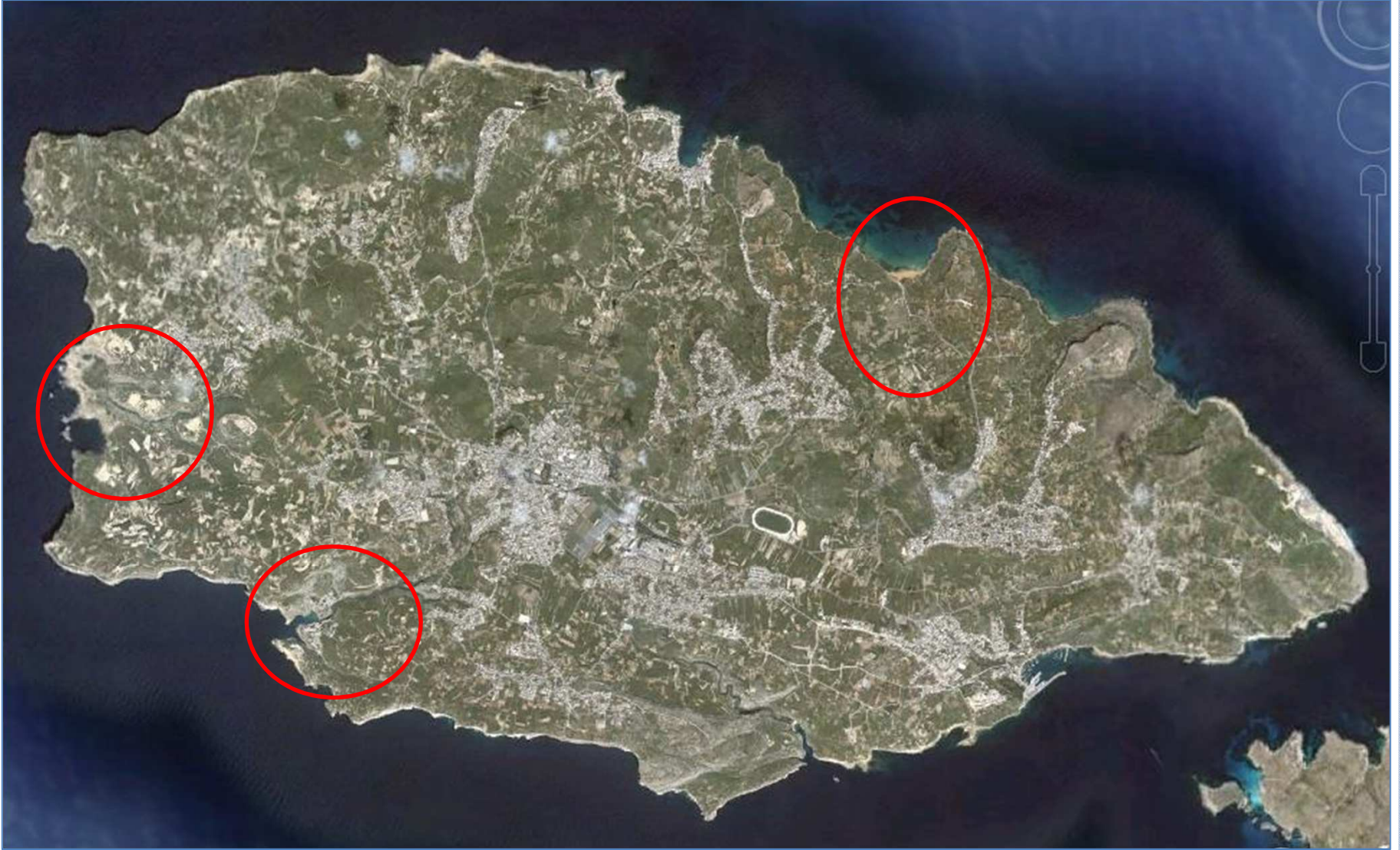
- Lecturer, Institute of Earth Systems
- Background: environmental management/geography
- Key areas of focus:
 - Landscape planning & management
 - Public participation
 - Protected area management
 - Social-ecological systems
 - Environmental ethics

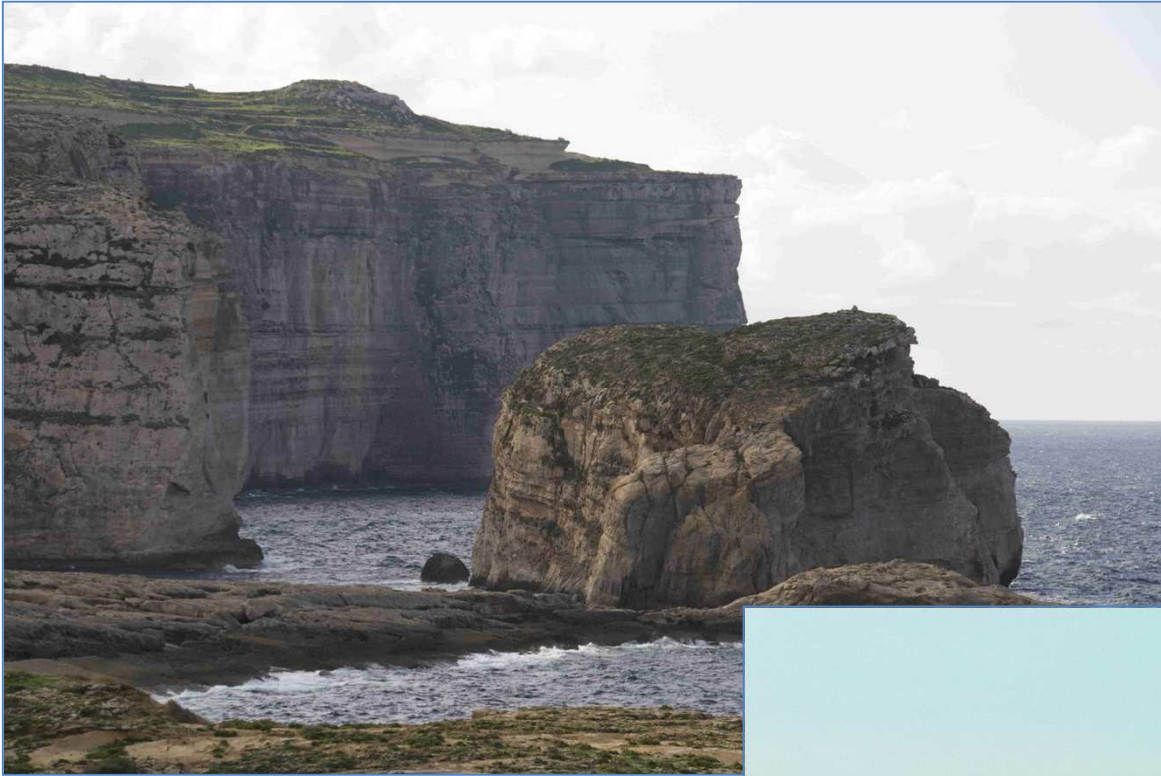


LANDSCAPE

- Landscape as *the wider setting*
- Encompassing:
 - Variety of natural/human elements
 - Interactions between these
 - Tangible & intangible character
 - Human values & perceptions
 - Sense of place & identity
- Spans objective/subjective range
- Increasingly becoming a focus of planning attention

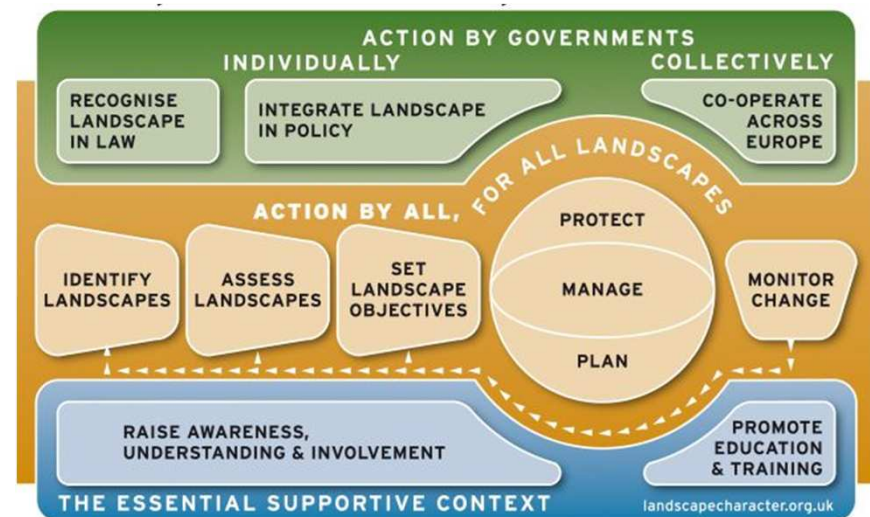






PLANNING FRAMEWORK

- Legal context: European Landscape Convention
- Both Malta and Italy parties to ELC
- Calls for:
 - Landscape assessment
 - Identifying threats to landscape character
 - Identification of landscape quality objectives



LANDSCAPE ASSESSMENT

- **Landscape assessment** as systematic process of objectively recording & describing the present-day landscape:
 - **Baseline description**
 - Elements and features
 - Land uses
 - Characteristics
 - Landscape character
 - Visual & non-visual landscape
 - **Evaluation**
 - Condition
 - Vulnerability
 - Coherence
 - Diversity
 - Sense of place
 - Conservation value



LANDSCAPE CHANGE ANALYSIS

- Review of landscape changes over time
- Based on comparisons with time-series data
- Time period to be defined

- Understanding of driving forces & trends of landscape change

- Based on available data sources, possibly including:
 - Aerial photography
 - Cartography
 - Literary documentation (books, articles, newspapers, etc.)
 - Toponymy (place names)
 - Stakeholder inputs



OUTCOMES

SIMBIOTIC targets:

- Documenting landscape status
- Understanding forces, trends & directions of change
- Framing project actions within landscape context
- Ensuring feasibility of measures within that context
- Moving towards identification of landscape quality targets
- Contributing towards achievement of those targets

Next steps:

- Identification of sites for subsequent landscape assessments
- Collation and assessment of available historical data sources

