

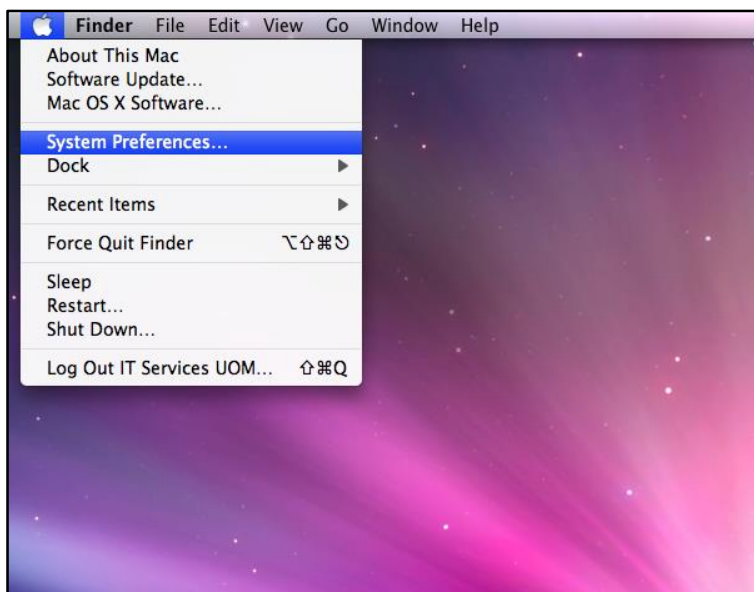
This user guide assists University of Malta staff and students to set up eduroam on their laptop running Mac OS X 10.5/10.6 (Leopard/Snow Leopard) to connect to the wireless network at UM and at other institutions participating in the eduroam initiative.

More information about eduroam is available at:

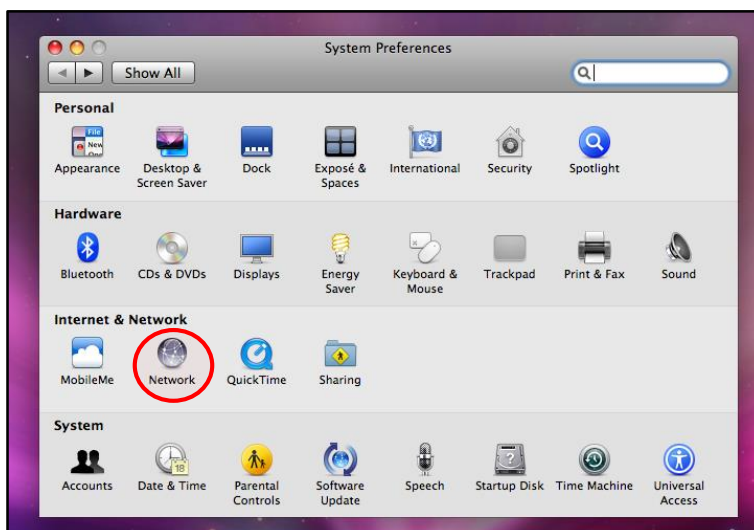
www.um.edu.mt/itservices/facilities/eduroam

To set up eduroam:

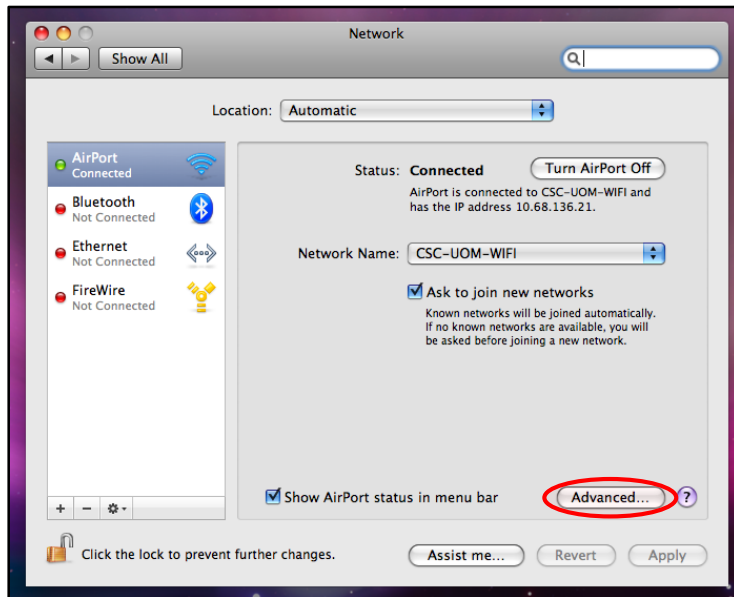
1. In the **Apple** menu click **System Preferences...**



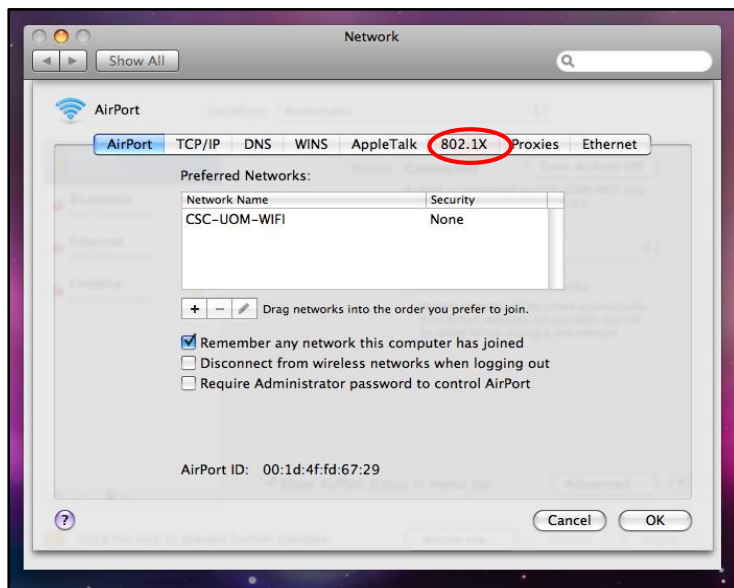
2. In System Preferences window, under Internet & Network click **Network**.



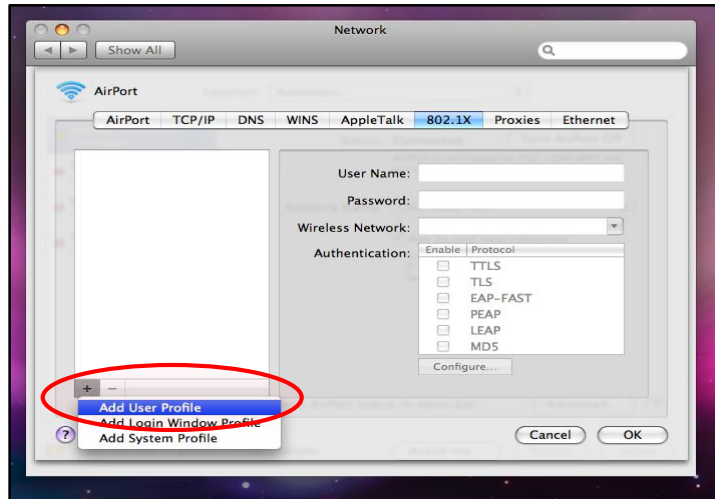
- Turn on AirPort if it is not switched on. Unlock the interface if locked and click the **Advanced** button.



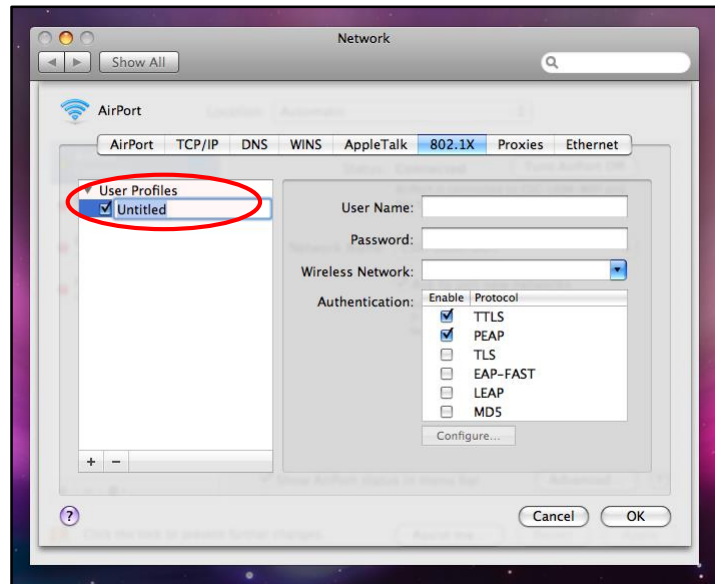
- In Network window, click the **802.1x** tab.



5. Click the (+) symbol and select **Add User Profile**.



6. Under User Profiles, replace the text Untitled with **eduroam**.



7. Enter/set the details as shown:

Username: UM IT Account
username

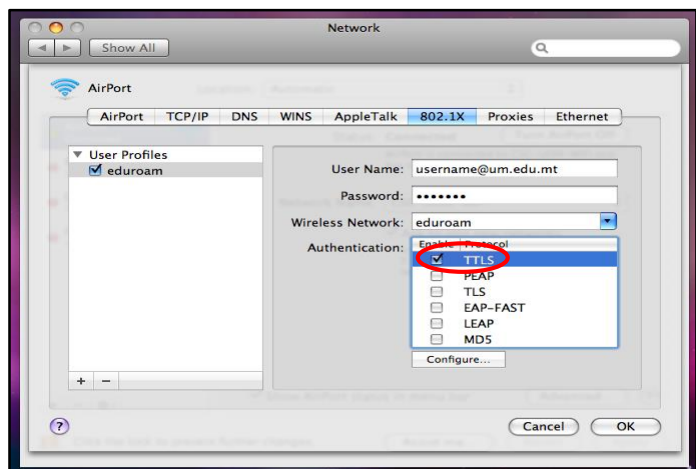
(e.g. jbor0001@um.edu.mt)

and your corresponding
University or Junior College email
password.

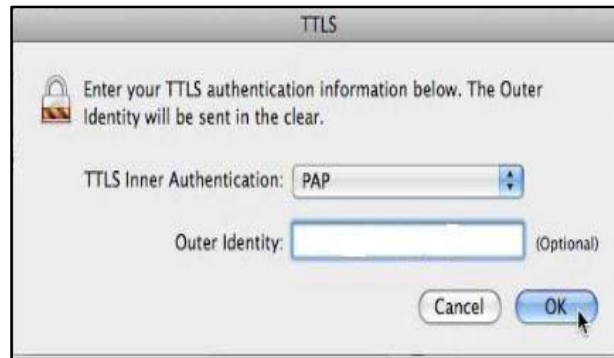
Wireless Network: **eduroam**.
NOTE that the network name is
case sensitive.

Authentication: **TTLS**

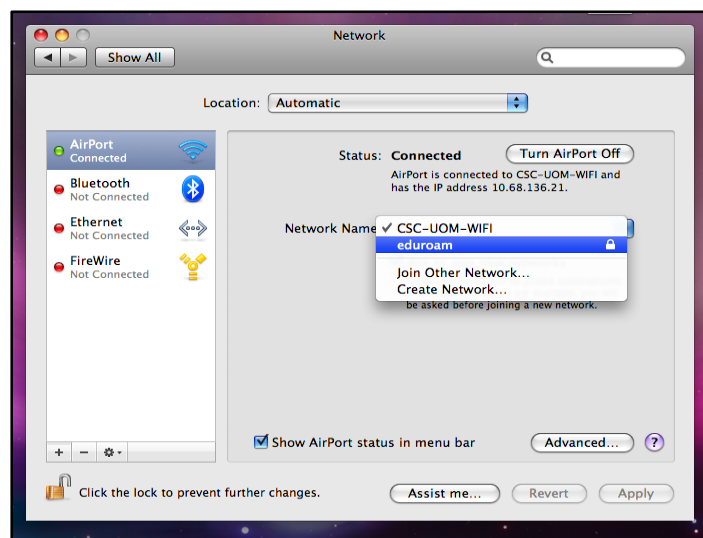
Highlight **TTLS** and click the
Configure... button.



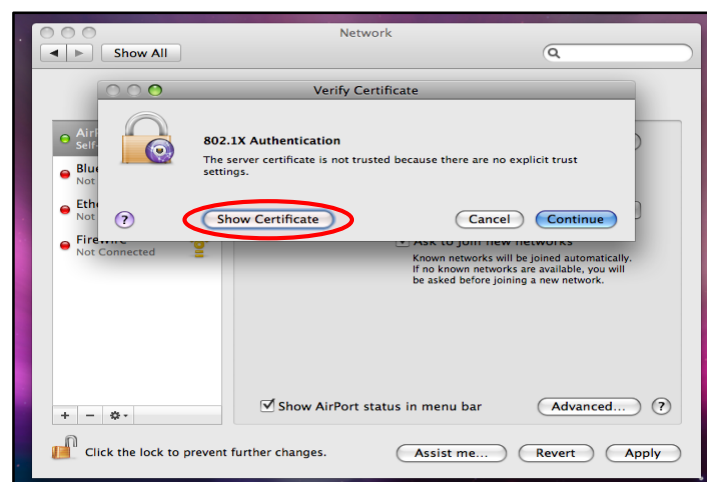
8. In the TTLS dialog box, set the TTLS Inner Authentication to **PAP**. Leave the Outer Identity box empty.



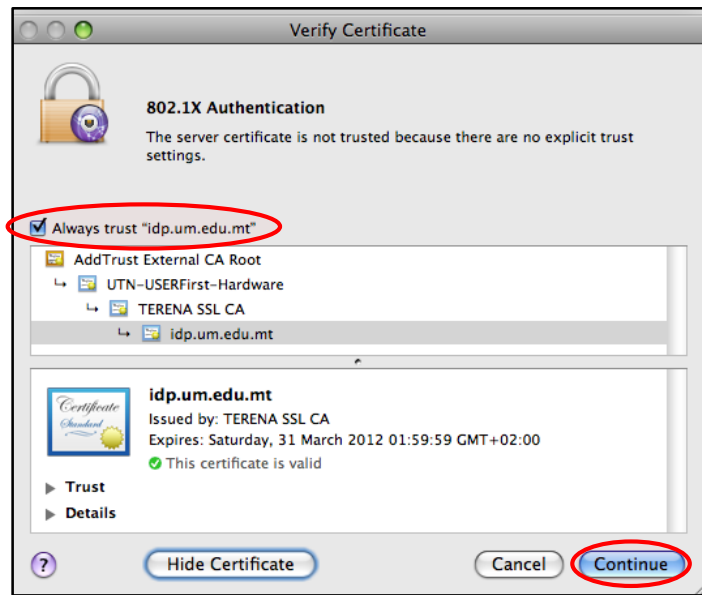
9. Close both the TTLS and the Network windows by clicking **OK**.
10. In the Network window, select **eduroam** in the Network Name field.



11. Depending the version of Mac OS X, this pop-up may be displayed. If not, you may proceed to Step 13. If the Certificate needs to be verified, click **Show Certificate** to continue.



12. In the Verify Certificate window, tick the option **Always trust "idp.um.edu.mt"**. Ticking the Always trust option will stop future requests to verify the certificate. Click **Continue** button.



13. You may now be prompted to enter your **Mac OS X** password to continue.



You should now be able to connect to eduroam when you are within an eduroam network range.

