
Wireless Hotspots Connecting the Laptop to the Campus Wireless Network

GUIDE



© **User Services**
IT Services

University of Malta

© **2013 User Services
IT Services
University of Malta
Msida MSD 2080
Malta**

May only be reproduced with permission.

Email: support.itservices@um.edu.mt

Web: www.um.edu.mt/itservices

Tel.+ 356 2340 4112

Table of Contents

A.	Introduction	2
B.	Connecting to the Wireless Hotspot Using Windows XP	3
C.	Connecting to the Wireless Hotspot Using Windows Vista/7	6
D.	Disabling Proxy Settings.....	9

A. Introduction

A number of wireless hotspots are available at various areas on campus to enable staff and students with a UM IT Account to connect their laptops to the campus network.

Follow this link for a list of locations where the wireless hotspots are available:

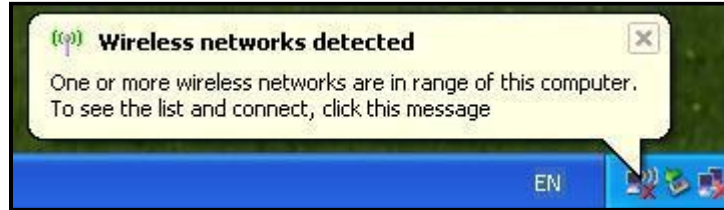
<http://www.um.edu.mt/itservices/facilities/wireless/loc>

You are strongly encouraged to maintain the security of your computer before connecting to any computer network. You should:

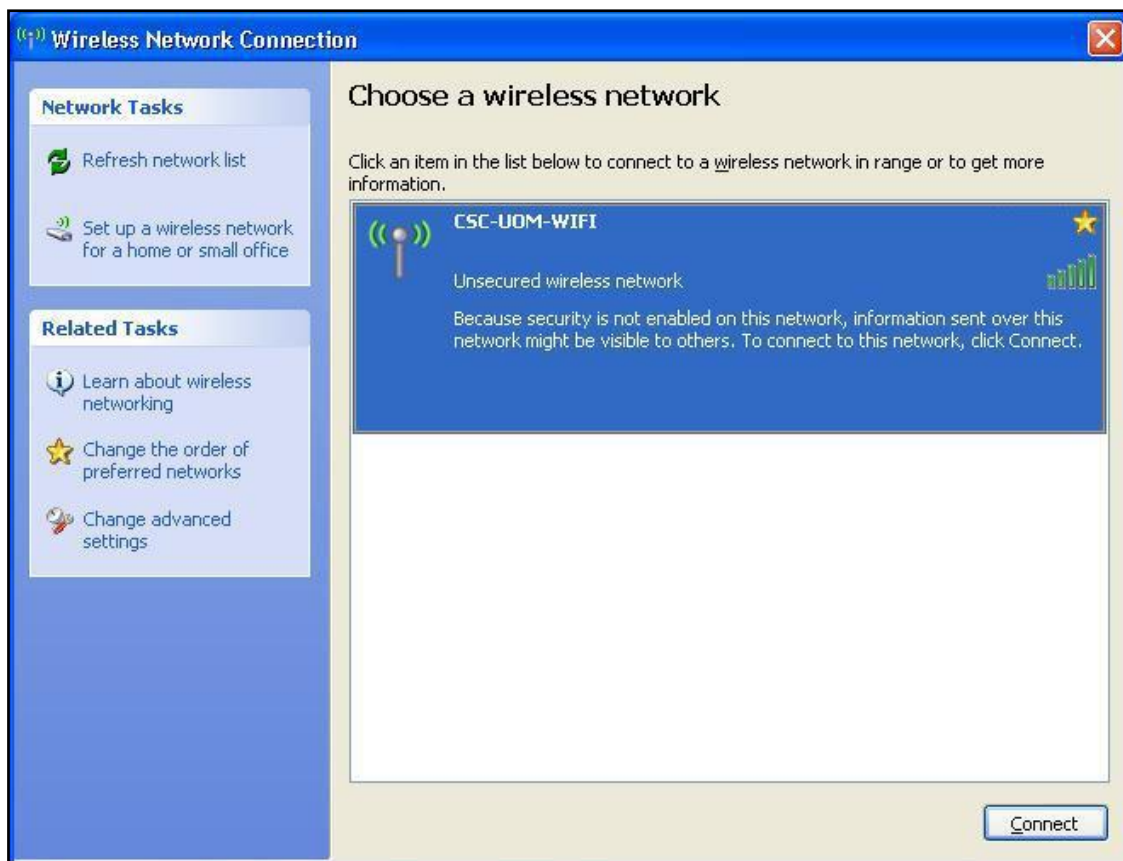
- ensure that the antivirus software is regularly updated
- download & install patches (or hotfixes) that are available for all software used on your computer
- install a personal firewall program
- install and regularly update anti-spyware software
- treat all email attachments, file downloads etc. with caution
- backup & remove critical or sensitive data from your computer
- use strong passwords

B. Connecting to the Wireless Hotspot Using Windows XP

Switch on your Wireless adapter. As soon as your system detects a wireless hotspot, a pop-up message in the notification area is displayed as shown below.



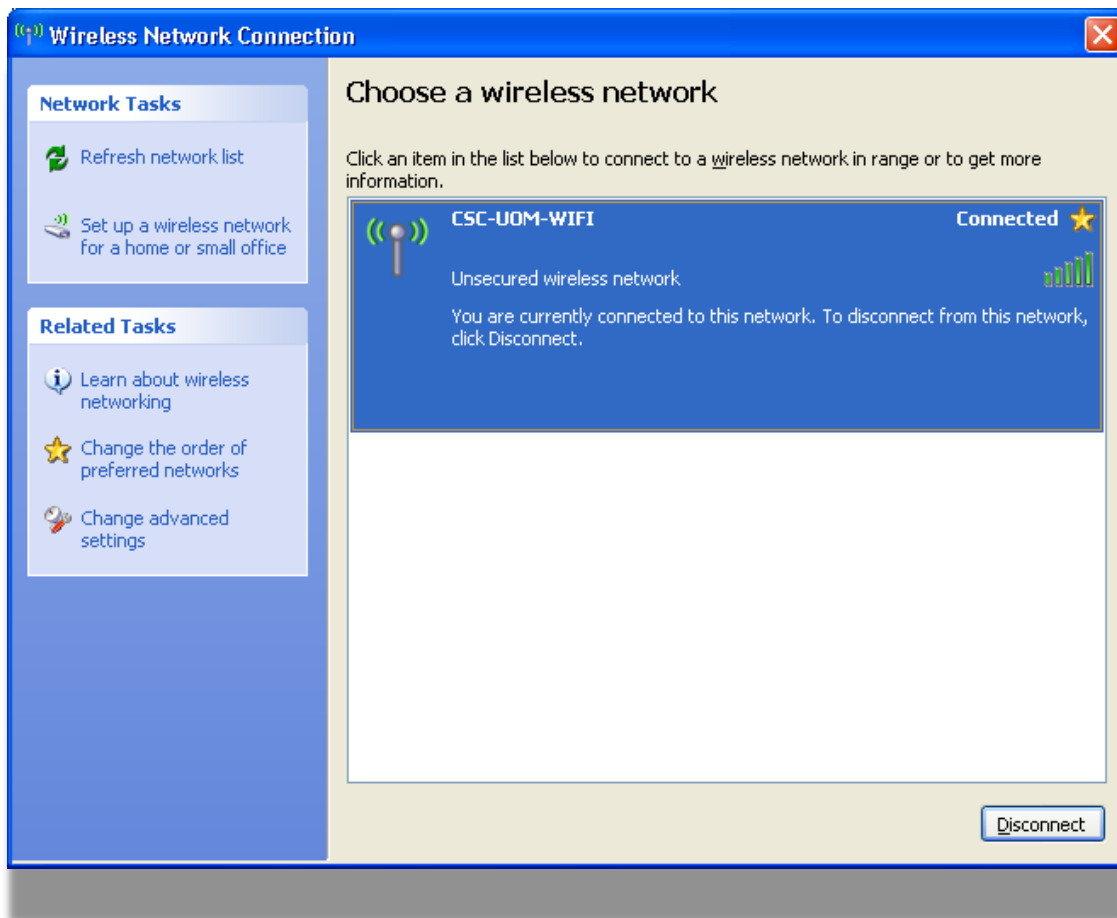
1. Click the pop-up message. The Wireless Network Connection dialog box is displayed.



2. Make sure that the **CSC-UM-WIFI** network is selected and click the **Connect** button.



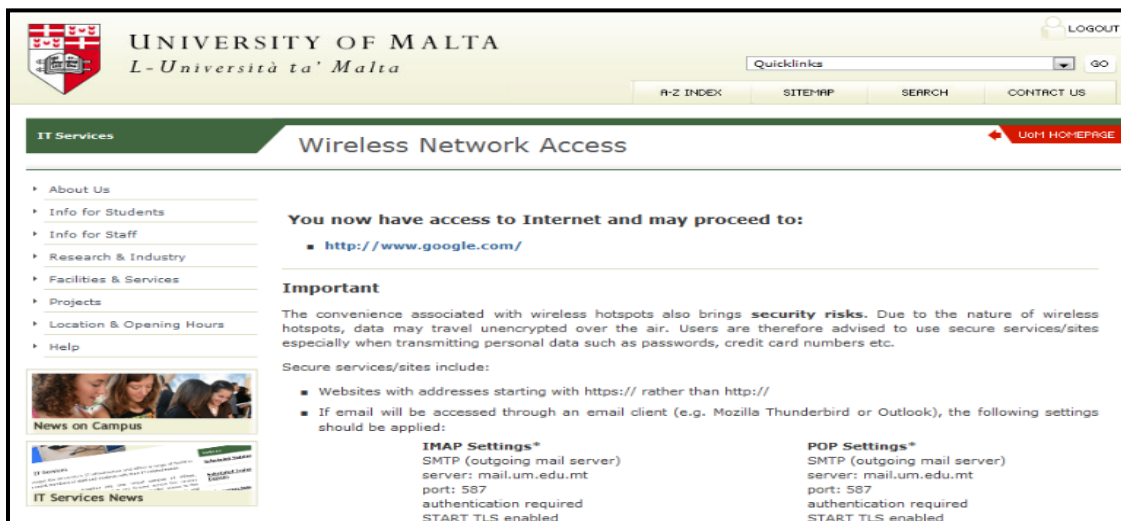
3. Click the **Connect Anyway** button in the warning message box above. The Wireless Network Connection dialog box is displayed again indicating that your system has been connected to the **CSC-UM-WIFI** network.



- Open your Internet browser (such as Mozilla Firefox or Microsoft Internet Explorer). When you try to browse the Web, the login screen below is displayed.



- Enter your **UM IT Account username**. E.g. jbor1 and your email **password**.
- Click the **Login** button. A window informing you about the security of data over unsecured sites is displayed. Secure and unsecured data transfer methods are also mentioned.

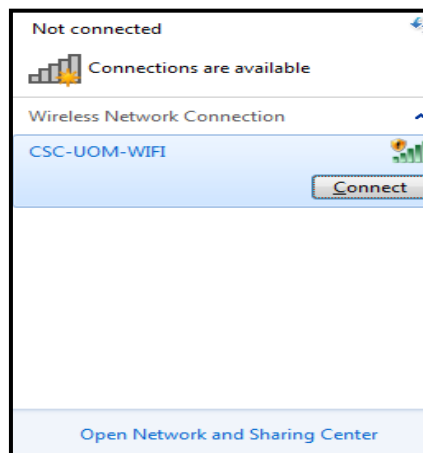


C. Connecting to the Wireless Hotspot Using Windows Vista/7

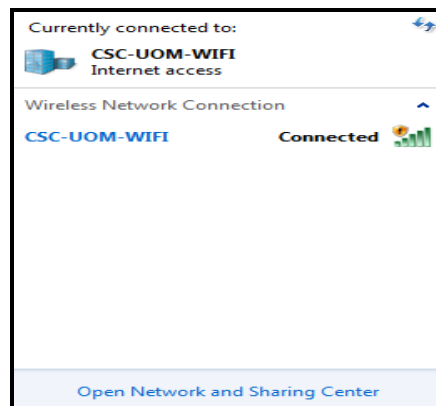
Switch on your Wireless adapter and click on the network icon as shown below.



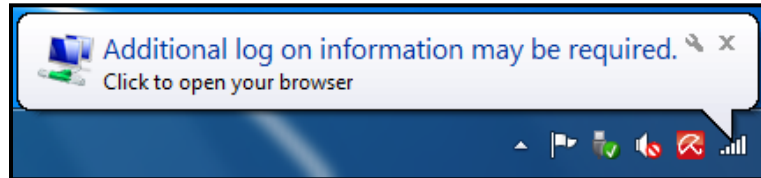
1. The wireless Network Connection pop-up window is displayed.



2. Make sure that the **CSC-UM-WIFI** network is selected and click the **Connect** button.



3. The Wireless Network Connection pop-up window indicates that your system has been successfully connected to the **CSC-UM-WIFI** network.
4. The following pop-up message is now displayed.



5. Click the pop-up message. Your default web browser loads and displays the following login screen.



6. Enter your **UM IT Account username**. e.g. jbor1 and your email **password**.
7. Click the **Login** button. A window informing you about the security of data over unsecured sites is displayed. Secure and unsecured data transfer methods are also mentioned.

The screenshot shows the University of Malta IT Services website. The header includes the university logo and name, a search bar, and navigation links like 'R-Z INDEX', 'SITE MAP', 'SEARCH', and 'CONTACT US'. The main content area is titled 'Wireless Network Access' and contains the following information:

- You now have access to Internet and may proceed to:**
 - <http://www.google.com/>
- Important**
The convenience associated with wireless hotspots also brings **security risks**. Due to the nature of wireless hotspots, data may travel unencrypted over the air. Users are therefore advised to use secure services/sites especially when transmitting personal data such as passwords, credit card numbers etc.
- Secure services/sites include:**
 - Websites with addresses starting with `https://` rather than `http://`
 - If email will be accessed through an email client (e.g. Mozilla Thunderbird or Outlook), the following settings should be applied:
 - IMAP Settings***
 - SMTP (outgoing mail server)
 - server: mail.um.edu.mt
 - port: 587
 - authentication required
 - START TLS enabled
 - POP Settings***
 - SMTP (outgoing mail server)
 - server: mail.um.edu.mt
 - port: 587
 - authentication required
 - START TLS enabled

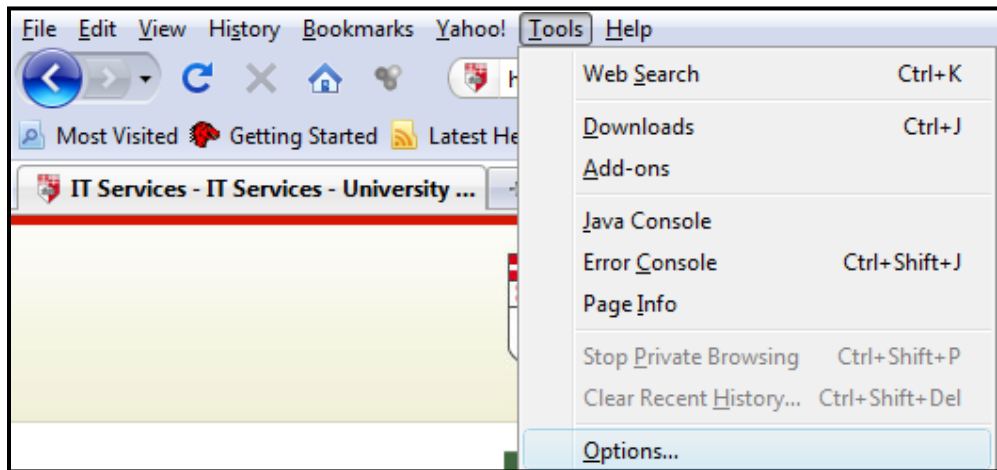
D. Disabling Proxy Settings

The proxy settings in your Internet browser must be disabled, otherwise you will not be able to connect to the wireless network.

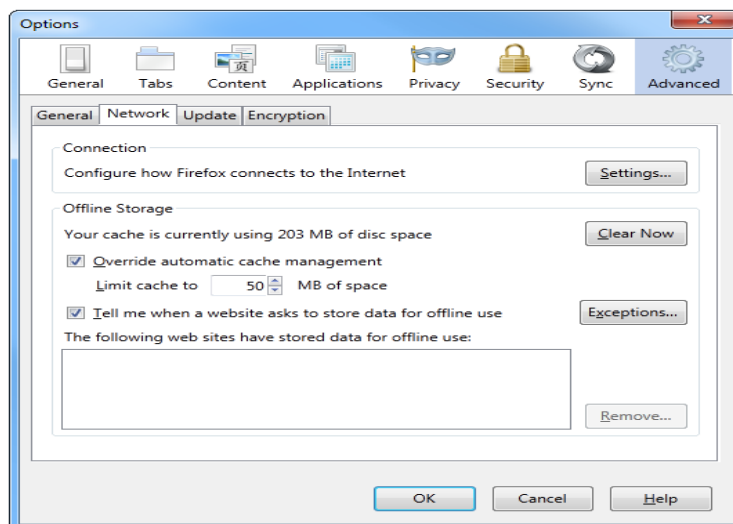
Mozilla Firefox

To disable the proxy settings in Mozilla Firefox 22:

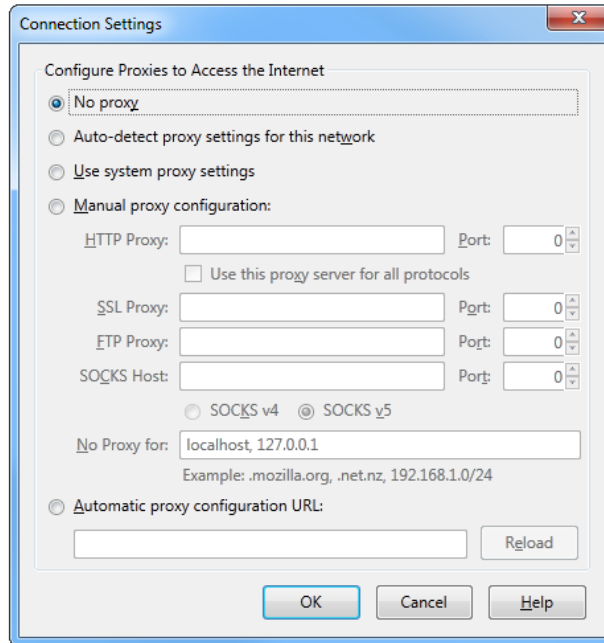
1. Click the **Tools** menu.



2. Select **Options...** The Options dialog box is displayed.
3. Click the **Advanced** icon then select the **Network** tab.



4. Click the **Settings** button. The Connection Settings dialog box is displayed.

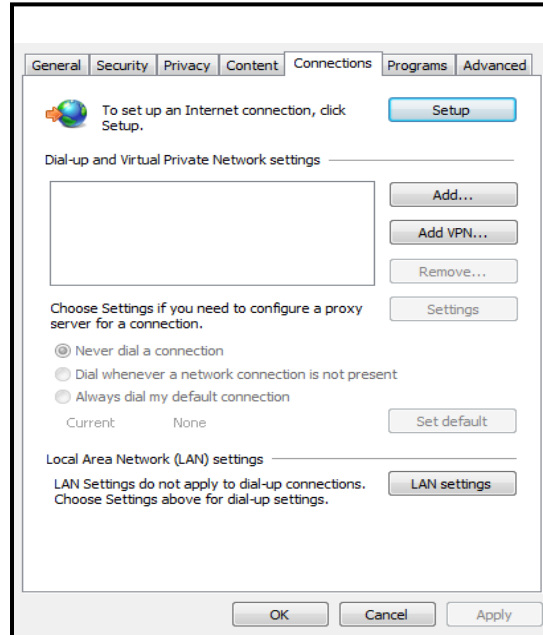


5. Tick the **No proxy** option.
6. Click the **OK** button to close the Connection Settings dialog box.
7. Click the **OK** button to close the Options dialog box.

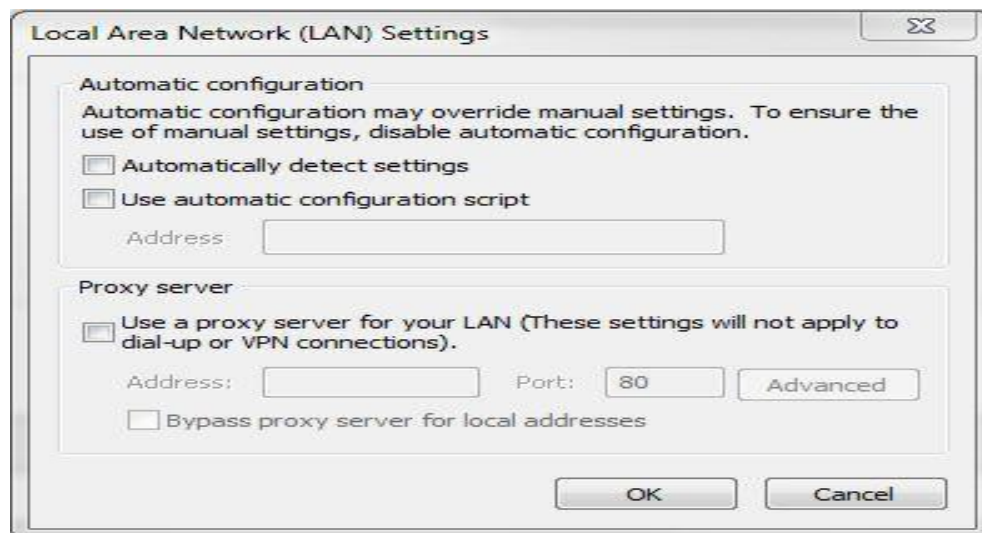
Microsoft Internet Explorer

To disable the proxy settings in MS Internet Explorer 10:

1. Click the **Tools** button 
2. Select **Internet Options**.




3. Select the **Connections** tab and click the **LAN Settings** button. The Local Area Network (LAN) Settings dialog box is displayed.

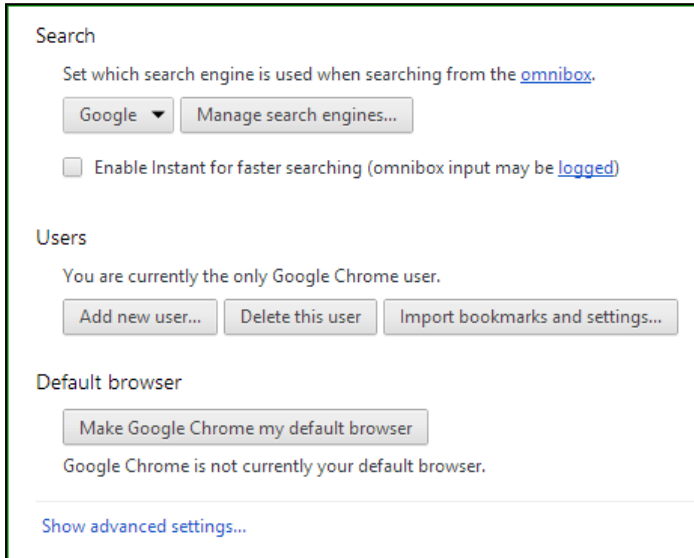


4. Make sure that all options are unticked (as shown above) and click **OK** to apply the settings.

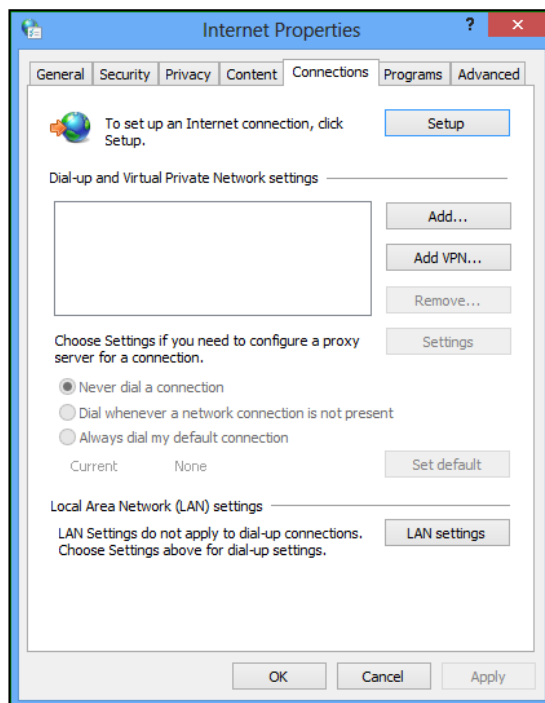
Google Chrome

To disable the proxy settings in Google Chrome 27:

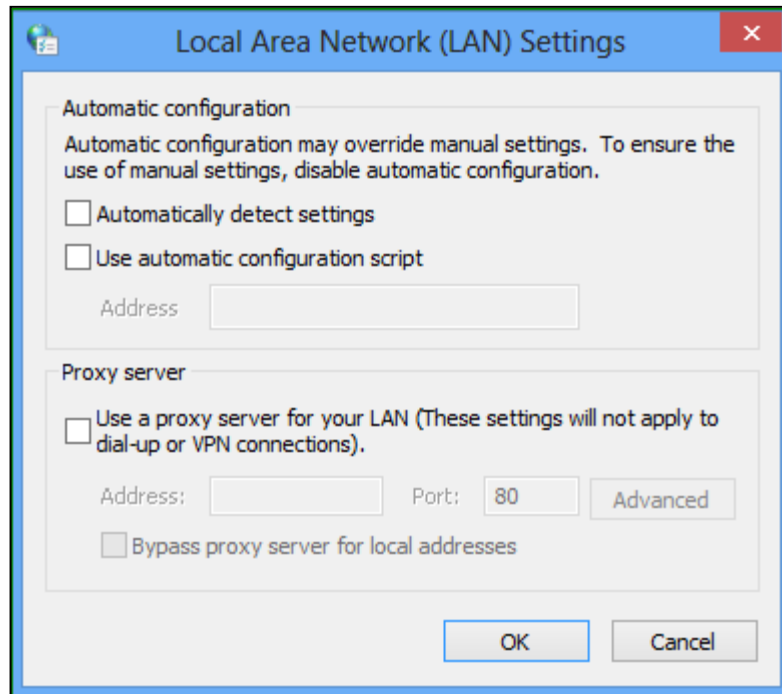
1. Click the **Hot Dog** icon 
2. Select **Settings**.
3. Click **Show advanced settings**.



4. In the **Network** section, click the **Change proxy settings** button. The Internet Properties dialog box is displayed.



5. Select the **Connections** tab and click the **LAN Settings** button. The Local Area Network (LAN) Settings dialog box is displayed.



6. Make sure that all options are unticked (as shown above) and click **OK** to apply the settings.

**© 2013 User Services
IT Services
University Of Malta
Msida MSD 2080
MALTA**

May only be reproduced with permission.

Email: support.itservices@um.edu.mt

Web: www.um.edu.mt/itservices

Tel: +356 2340 4112