
Installing ArcGIS

GUIDE



**© User Services
IT Services
University of Malta**

© **2012 User Services**
IT Services
University of Malta
Msida MSD 2080
Malta

May only be reproduced with permission.

Email: support.itservices@um.edu.mt
<http://www.um.edu.mt/itservices>
Tel. +356 2340 4112

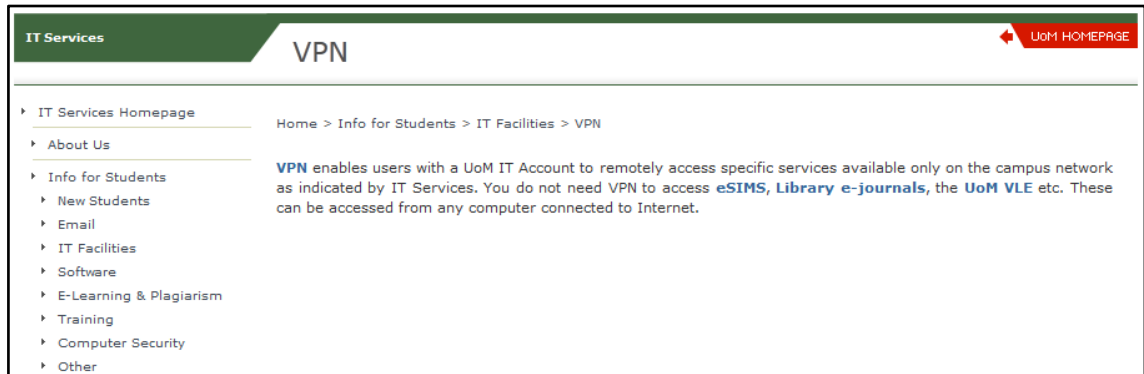
A. Connecting to VPN

ArcGIS requires OpenVPN to be connected in order to install properly. To install OpenVPN please follow the steps below:

1. Navigate to the IT Services VPN web page:

www.um.edu.mt/itservices/students/facilities/vpn

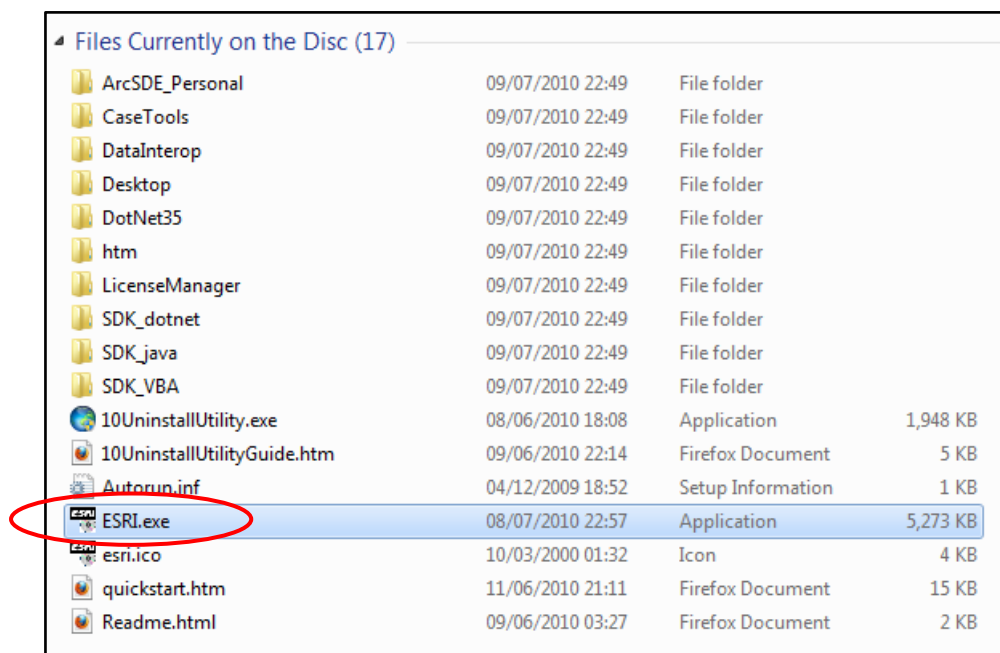
2. Click **VPN** link and follow the onscreen instructions:



 Ensure that OpenVPN is connected before continuing installation.

B. Installing ArcGIS

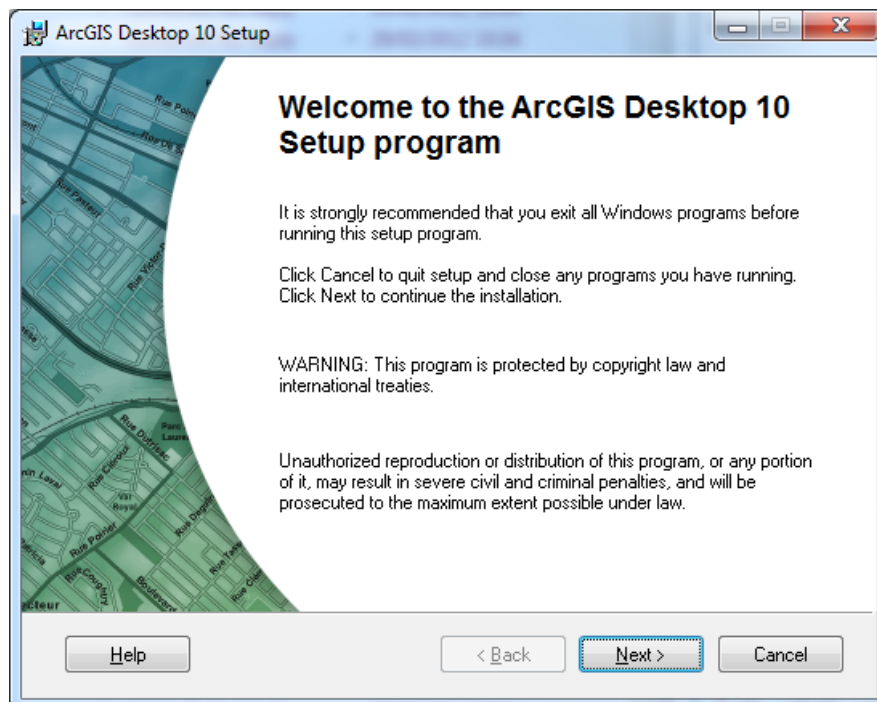
1. From **My Computer**, locate the DVD-Drive.
2. In the provided DVD, open **ESRI** to start the installation.



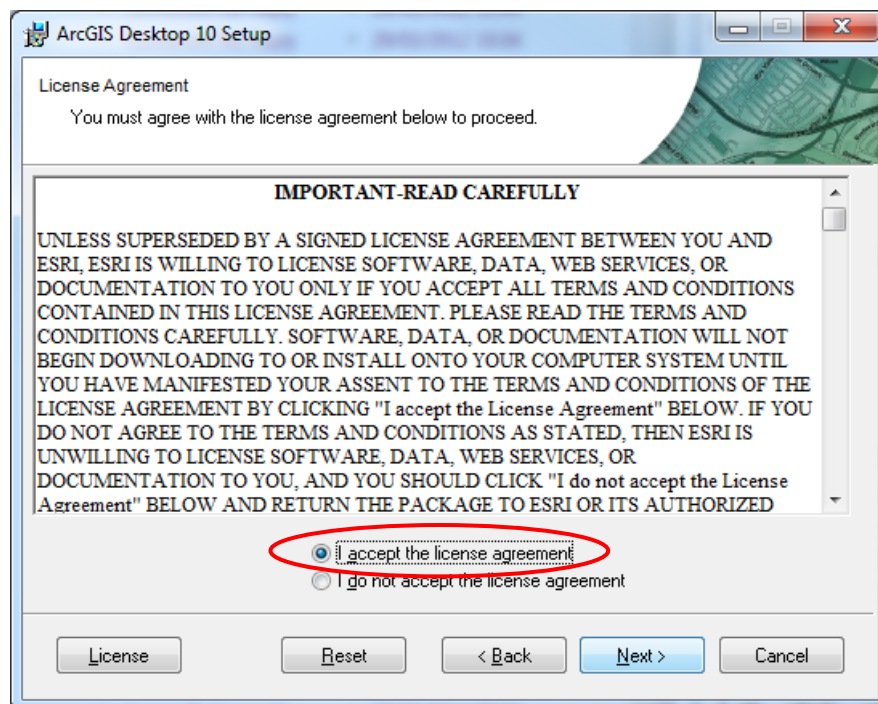
3. Click **Setup** adjacent to the text ArcGIS Desktop.



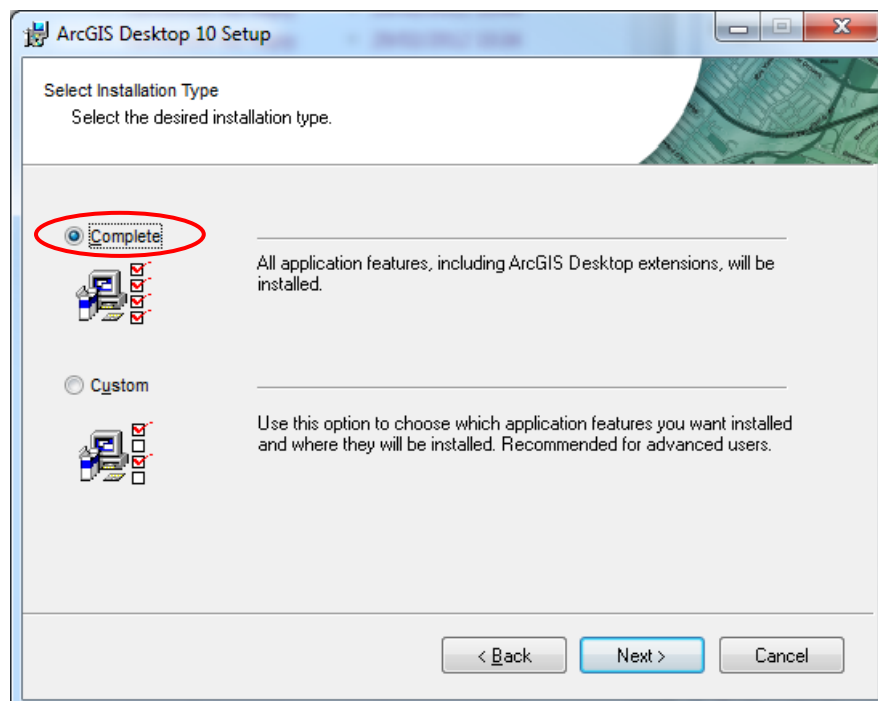
4. Click **Next** button.



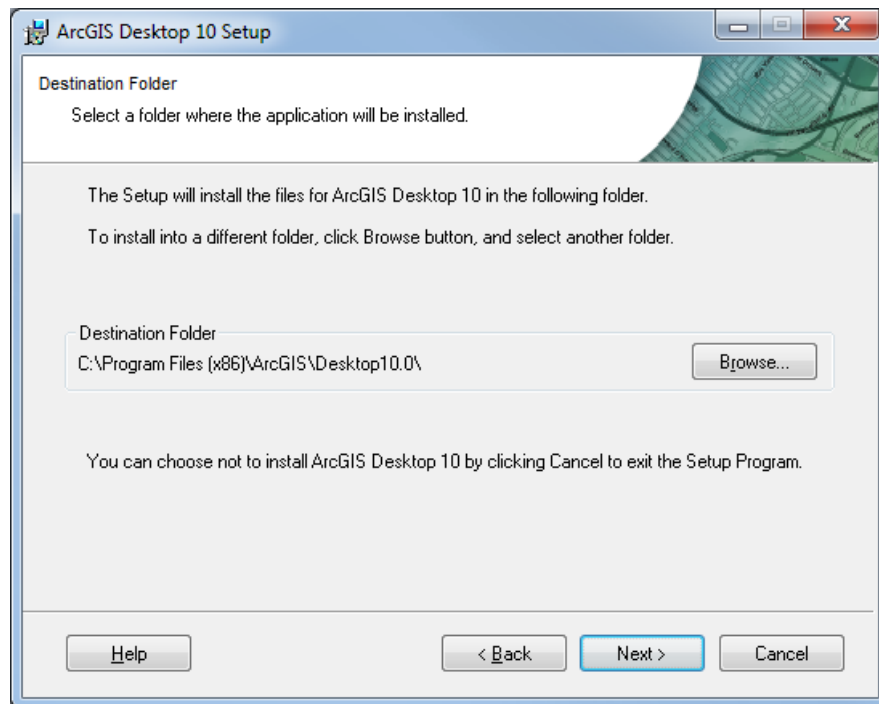
5. Select **I accept the license agreement** option.
6. Click **Next** button.



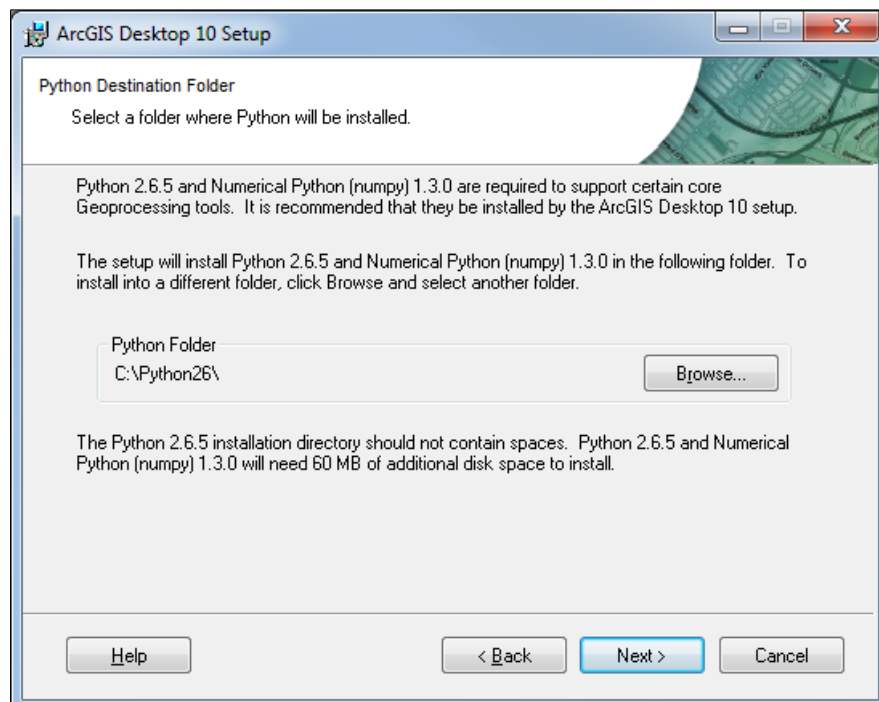
7. Select **Complete** option.
8. Click **Next** button.



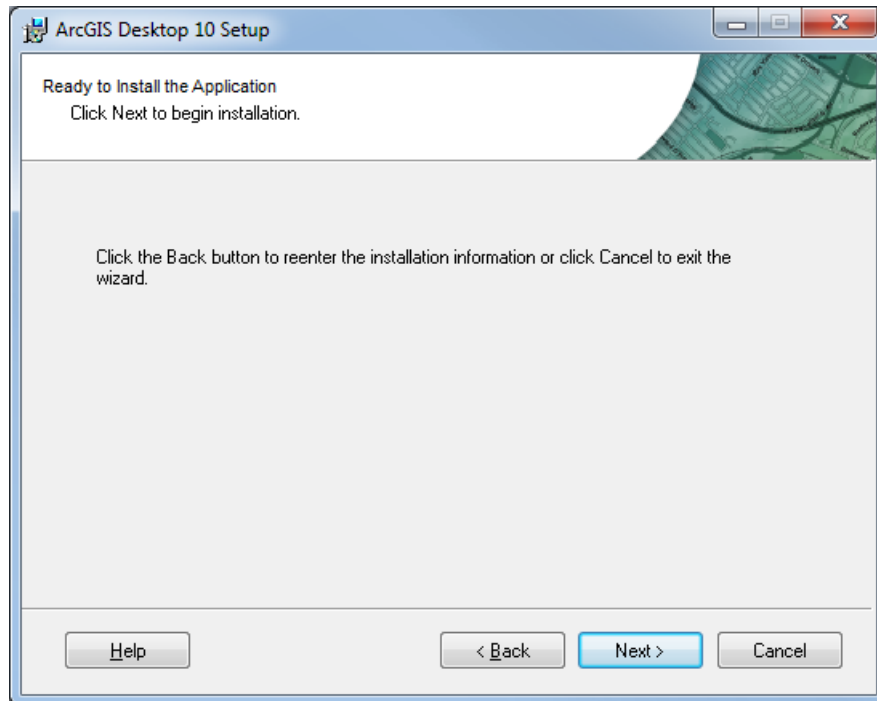
- To install the program in the default folder, click **Next** button. Otherwise, click **Browse** and locate the preferred location on your computer.
- Click **Next** button.



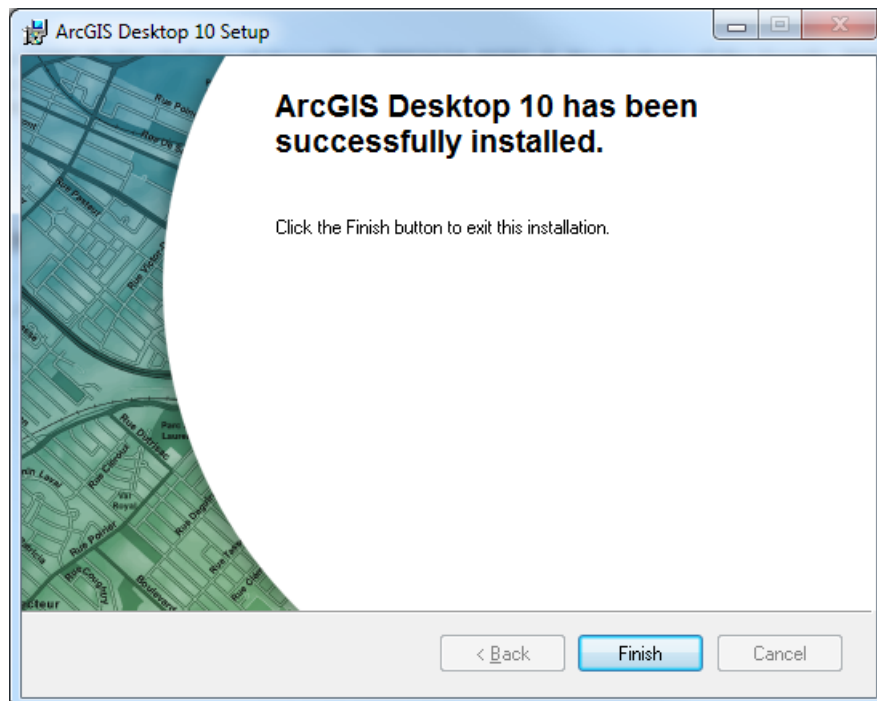
- Click **Next**.



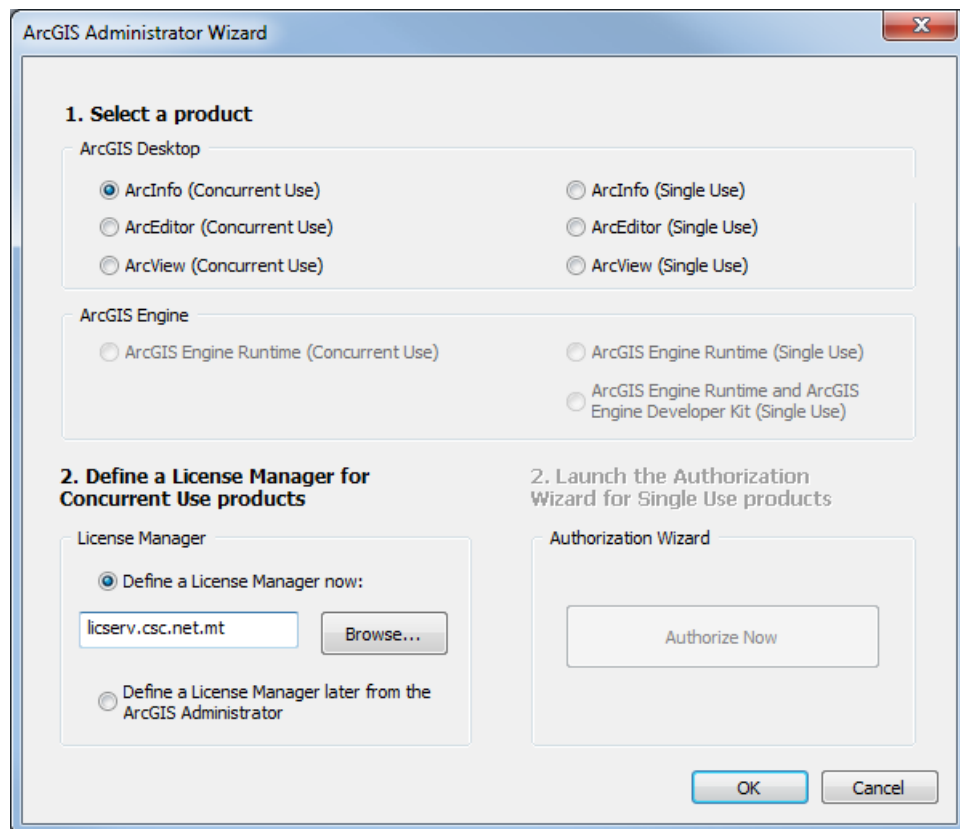
12. Click **Next**.



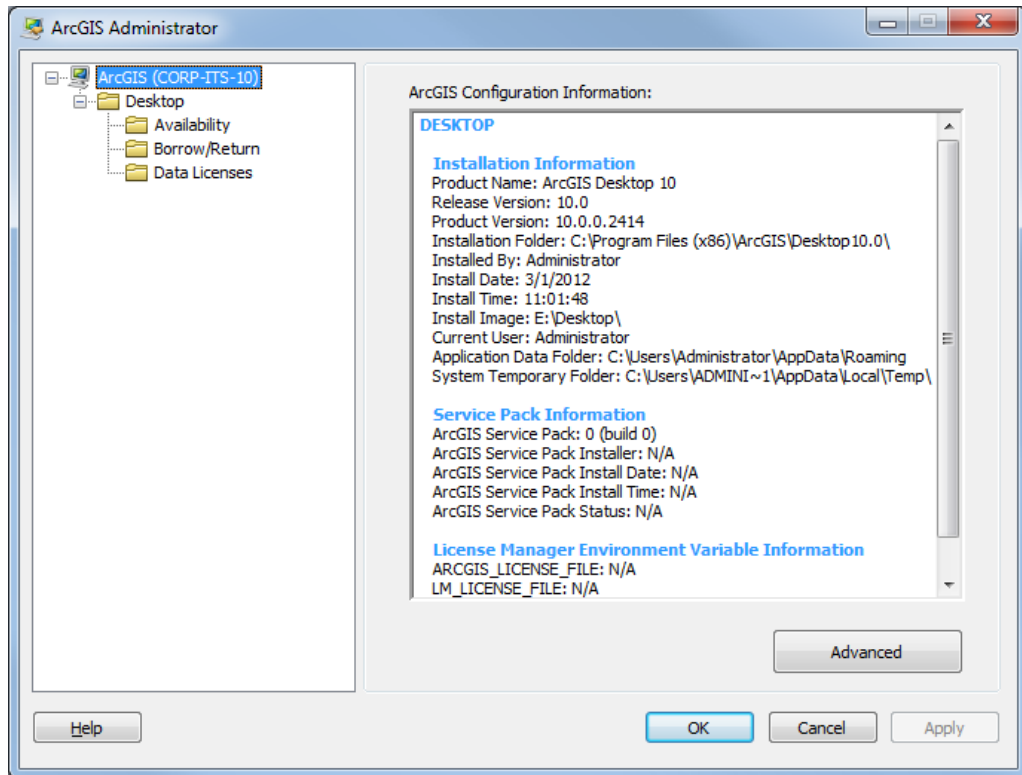
13. Click **Finish** button.



14. Select **ArcInfo (Concurrent Use)** option.
15. Select **Define a License Manager now:** option.
16. Type **licserv.csc.net.mt** in the Licence Manager text field.
17. Click **OK** button.



18. Click **OK** button to successfully install ArcGIS.



Note that:

- Any loss of network connectivity will disconnect the program from the license server. This will cause the program to close without notice and any unsaved work will be lost.

**© 2012 User Services
IT Services
University of Malta
Msida MSD 2080
MALTA**

May only be reproduced with permission.

Email: support.itservices@um.edu.mt

<http://www.um.edu.mt/itservices>

Tel. +356 2340 4112