

L-Arkitettura Maltija

WPS129 Marlene Falzon – Mużew tal-Pulizija

Wara li fil-ħarġa li għaddiet, tkellimna fuq il-kappelli u legġendi Maltin, issa jmiss li nżuru xi postijiet fejn jirrifletti stili differenti ta' Arkitettura Maltija. L-arkitettura bħala arti u t-teknika tal-bini twettaq il-ħtiġijiet prattiċi u espressivi tal-bniedem, u għalhekk hija meħtieġa f'kull kultura, għax mingħajrha l-bniedem ikollu jissara b'mod primittiv ma' l-elementi.

Kif nafu, Malta għaddiet minn diversi ħakmiet barranin li ħalliet impressjoni qawwija, bħal ma ħallew l-Għarab, in-Normanni, il-Kavallieri u l-Ingłizi.

F'Malta nsibu diversi postijiet fejn wieħed jista' josserva stili differenti ta' arkitettura li kienu jiddominaw ġewwa Sqallija u f'pajjiżi oħra Ewropew, li jfakkruna fl-eżistenza ta' kull ħakma, bħalma nsibu ġewwa l-Imdina, r-Rabat, il-Belt Valletta, il-Birgu u f'diversi villaġġi kemm f'Malta kif ukoll f'Għawdex.

Xieraq li nibdew insemmu xi eżempji ta' xi stili propju ġewwa l-Imdina l-belt l-antika. Kif nafu fi żmien il-ħakma ta' l-Għarab, l-Imdina għet imċekna għal difiża ahjar. Barra min hekk insibu stil ta' twieqi li kellhom forma ta' kaxxa bit-toqba, u li kienu jissejġu 'Muxrabija'. Insibu twieqi oħra li kienu jiġu bil-ponta, mżejnin bil-kolonn bħal ma naraw ġewwa Palazzo Falzon u dan it-tip ta' bini kien jissejġu *Siculo-Norman* propju fi żmien Medjvali.

Ftit huma l-fdalijiet li nsibu f'artna, li jfakkruna f'dan is-seklu, imma l-ftit li naraw jinsabu ġewwa (Ċittadella) f'Għawdex, l-Birgu u ġewwa l-kappelli Medjvali bħal ta' San

Girgor (Iż-Żejtun), Bir Miftuħ (Gudja), u Ħal Millieri.

Infatti filwaqt li l-Ewropa ċivilizzata kienet qed tirsisti fil-kisbiet rinaximentali, hawn Malta kien għadu jsaltan il-Medjuevu.

Ir-rabta tagħna ma' din il-gżira kienet minn dejjem intima, imma din saret aktar effettiva fis-sekli erbatax u wisq iżjed f'dak ħmistax, peres li l-vojt li ħallew l-Għarab beda jimtela' mis-Siċiljani. Dawn matul u wara l-miġja tan-Normanni ġew f'pajjiżna u kebobsu fil-Maltin l-interess, it-tagħrif u l-possibilitajiet kbar tal-ġebbla Maltija.

U mbagħad insibu stil differenti li daħal f'Malta permezz tal-kavallieri jiġifieri li mill-1530 twieled l-*istil rinaximentali*, u hawn nidhlu fil-konflitt soċjali tan-nobbilta' Sikulo-Maltija li ma ridietx lil Kavallieri peress li riedu jibqgħu jgawdu l-fewdalizmu tagħhom. Din it-tip ta' arkitettura nsibuha fil-Birgu għax madwar is-sena 1533, il-Kavallieri bnew fil-Birgu l-ewwel bereġ tagħhom fuq stil rinaximentali.

Il-karatteristika prinċipali ta' dan l-istil hekk kif użat minn Ġlormu Cassar, li kien l-arkitett ta' l-

Ordni, kienet in-nuqqas ta' ornamenti fil-ġebbla (*plain style architecture*). L-arkitetti li kienu jibnu fuq dan l-istil kienu ġew influwenzati minn arkitettura militari, li kienet timxi fuq linji diretti u sempliċi. L-aqwa eżempju f'Malta ta' bini fuq stil rinaximentali hija l-Knisja Konventwali ta' San Ġwann.

Wara li l-Kavallieri u l-Maltin wettqu r-reboħa spettakolari tagħhom tal-Assedju l-Kbir fuq in-nofs qamar, il-bidla diġa' kienet qed tinħass xi ftit, u l-istil rinaximentali spoloda fl-iżvilupp ferm aċċelerat, aktar u aktar meta twieldet il-Belt Valletta. L-aħħar snin tas-seklu 16 u l-ewwel snin tas-seklu 17 kienu żmien ta' bidla fl-arkitettura Maltija, mir-Rinaximent għal *Barokk bikri*. Il-Barokk f'Malta beda diehel fl-ewwel snin tas-seklu 17, l-iktar permezz ta' l-inġinier ta' l-ordni Francesco Buonamici li għex u ħadem f'Malta (1635-1659).

Kellna *Barokk Bikri* li kien jingħaraf mis-sempliċità fid-disinn tal-ġebel tal-faċċata, *Barokk fl-aqwa tiegħu* magħruf bħala *Golden Age of Maltese Baroque* bejn (1650-1760) li kien jingħaraf mill-kumplikazzjonijiet u l-kumplessità fid-dekorazzjonijiet u għandha l-*Barokk imħallat man-Neo-Klassiku* li nxtered

SKIL Christmas Gift Offer...
ANY 1 FOR €35.00
ANY 3 FOR €99-



**ideal as a
 Christmas
 Gift!**

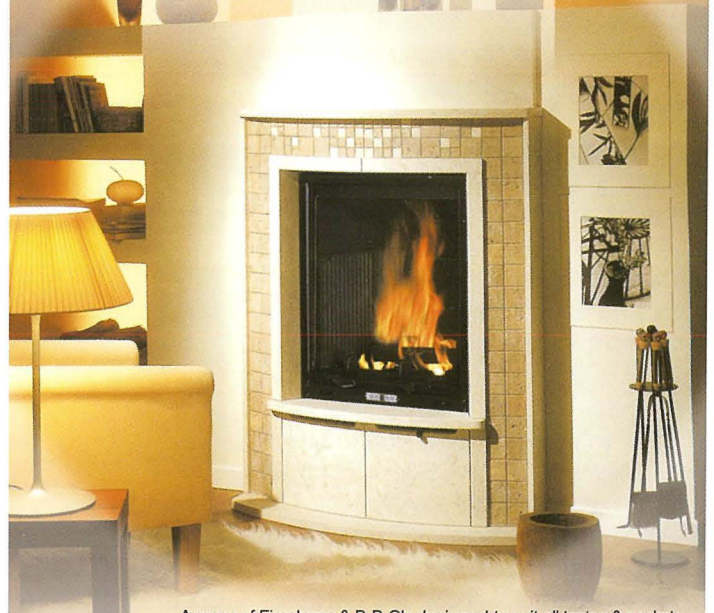
Free Deliveries!
 For purchases of 35 Euros and over.

WJA distributors



Dejma Road, Tarxien TXN 9035 Tel: 2180 9426 / 2180 0478
 J. Sciberras Str. Hamrun HMR 1010 Tel: 2123 2943
 Email: info@wjadistributors.com www.wjadistributors.com

il camino
 Fireplaces and Barbeques

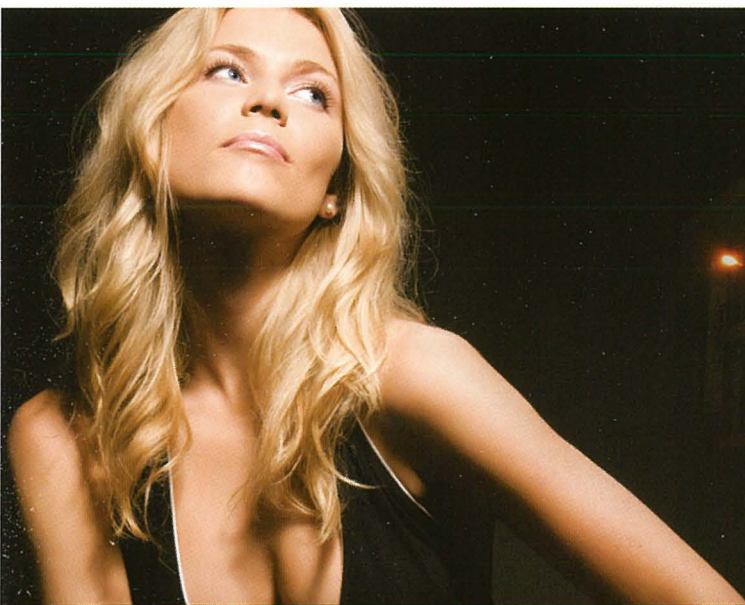


A range of Fireplaces & B-B-Q's designed to suit all tastes & pockets.
 Functionality & quality are guaranteed by Edilkamin the largest
 European Company in the Fireplace and Stove sectors.

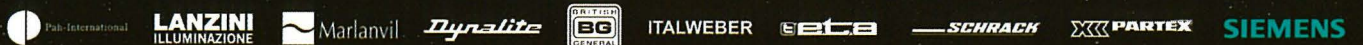


EDILKAMIN

48/49, Fleur-de-Lys Road, B'Kara. Tel: 2144 1689, 2149 5726 Fax: 2149 7097
 Email: ilcamino@keyworld.net Website: www.starwebmalta.com/camino.htm



it's all about **lights** **MF** electrix



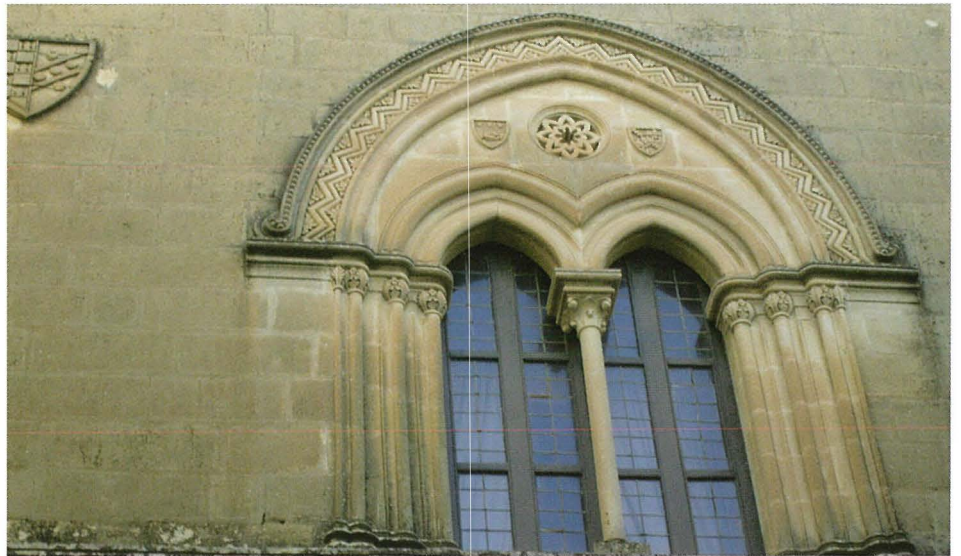
S. Psaila Str. B'Kara, BKR 9078 T 2149 4955 - 56 F 2149 4957 info@mfelectrix.com.mt www.mfelectrix.com.mt

fl-Ewropa wara t-tieni nofs tas-seklu 18.

L-isbaħ eżempju li nistgħu nsemmu ta' stil barokk hija l-faċċata tal-Berġa ta' Kastilja, li kellha faċċata Rinaxximentali sakemm infadmet Barokka li hemm illum.

Waħda mill-karatteristiċi tal-Barokk Malti jidher fl-għadd ta' knejjes parrokkjali u kappelli li nbnew b'dan l-istil, kemm fil-Belt Valletta kif ukoll f'bosta rħula f'Malta u Għawdex. Karatteristika tal-knejjes Barokki f'Malta huma l-kampnari għamla ta' torrijiet, li turi l-influenza ta' Barokk Spanjol fi Sqallija u f'Malta.

Imbagħad niġu għal stili oħrajn kompletament differenti li huma l-istil *Neo-Klassiku* u l-istil *Neo-Gotiku*, wara li l-era tal-Barokk f'Malta giet fi tmiemha bit-tluq tal-Kavallieri fl-1798. Għalkemm il-Maltin baqgħu influwenzati bil-Barokk baqgħu b'dik l-użanza ta' bini saħansitra fis-seklu 20 li ġie mħallat ma' l-istil neoklassiku, u li ngħata spinta mill-Ingłiżi wara l-1800. L-istil *Neo-Klassiku*, kif wieħed jista' jobsor jixbaħ hafna l-istil li kienu jużaw il-Griegi tal-qedem fil-bini tagħhom. Nistgħu nsemmu xi eżempji ta' bini fuq stil Neo-Klassiku bħall-Katidral Anglikan ta' San Pawl,



mibni mill-Ingłiżi.

Insibu wkoll fl-arkitettura Maltija, l-istil *Neo-Gotiku* li fih l-arkata ġeġja bil-ponta u havn Malta nsibu ċ-ċimiterju magħruf bħala l-Addolorata, fejn l-arkati ġejjin bil-ponta, u nistgħu nsemmu wkoll il-knisja tal-Balluta mibnija wkoll fuq stil Gotiku.

Nistgħu ngħidu li wara t-Tieni Gwerra Dinjija,

hafna familji harbu mill-ibliet u bdew herġin minn soċjeta' tradizzjonali, u jidhru f'waħda aktar moderna, u b'hekk twieldet l-ewwel *art nouveau* tal-Ewropa li kien jagħfas hafna fuq il-motivi veġetali, l-użu ta' haċid, hġieġ ikkullurit u materjali godda oħra.

Kultura ta' l-Arkitettura Maltija stagħniet mat-terbiba tas-sekli li wrew l-estensjoni tal-moħħ Malti permezz tat-tfassil strutturali. 

"Cinderella" a fascinating ice show!

'Live at The MCC, Valletta 9th & 10th January 2010

NOW EXTRA PERFORMANCES!!

Enchanting, fairy-tale like and full of grace, Sergei Prokofieff's "Cinderella" is the fantastic story of the transformation of a poor orphan girl into a princess, which is ideally suited for the glittering world of ice. As if defying gravity, "Cinderella", the good fairy and the entire princely entourage glide over ice in the ballroom scene, while the stepmother and her daughters, while their martial looking twists and jumps draw attention to themselves. The lifts of "Cinderella" and her Prince and the immense charm of Sergei Prokofieff's ballet music do the rest to entice the spectator completely into an overwhelming world of fantasy and poesy.

As early as 1967, Konstantin Boyarski founded the State Ice Ballet and set it going with a production based on Tchaikovsky's "Nutcracker" and combined the art of ice skating with classical Russian ballet for the first time. Even in those days, it met with immediate and overwhelming success among connoisseurs of ballet and the critical public in its home country. The arduous of adapting classical figures, lifts and *jetés* to the ice rink had been worthwhile. A new, magical genre was thus born with the ice ballet. Over the years, not only has the repertoire expanded, but the refinement and design of sets, props and costumes has been perfected as well. Today, a "core" of 80 ice skating dancers with about 800 costumes enchant on the mirror like surfaces of theatres and arenas across the world. Most of the dancers here today come from the stock of individuals and pairs who have won Russian and international prizes and medals for ice-skating. These then

underwent hard and intensive training under the choreographer Konstantin Rassadin (Marinski Theatre) to learn how to merge the elements of athletic ice-skating with the skills of classical Russian ballet, to give a high quality and graceful performance. Thus, for instance, ex European champion Olga Ivanova and the former Olympic starter Andrei Stroganov dance today to Prokofieff's "Cinderella". Choreographer at the St. Petersburg State Ballet On Ice, Konstantin Rassadin, was the lead soloist for more than 23 years at the ballet in the Marinski Theatre (formerly known as the Kirov Theatre) and has danced and worked with stars like Rudolf Nurejew, Mikhail Baryshnikov and Natalia Dudinskaya.

Tickets can be purchased from 21st October at The Mediterranean Conference Centre, Valletta. MCC Box office opening hours are from 10:00 to 13:00 and 17:00 to 19:00 Monday to Friday, and from 10:00 to 13:00 on Saturdays. Reservations can also be made on the phone by calling 25595750/1 during box office hours stipulated above. Gozo Box Office opening hours are from 09:30 to 16:30, Monday to Friday. For Gozo Box office please call 21558266 or 79815541.

For further information regarding this event and special offers for early bird bookings and for those who have purchased tickets to see The Holy Mountain, kindly visit www.cinderellaoniceinmalta.com, or send an e-mail to info@standingovations.com.mt or call 00356 79557988. For online bookings visit www.mcc.com.mt

20 % DISCOUNT FOR POLICE MEMBERS

