

*Manuel  
Tourney*

*1960*



1732. 1960



Manoel  
Theatre

40

SRMOMA

*Patron: HER MAJESTY THE QUEEN*



M. A. D. C.

*presents*

# WINTER JOURNEY

*A Play*

*by*

CLIFFORD ODETS

*AT THE*

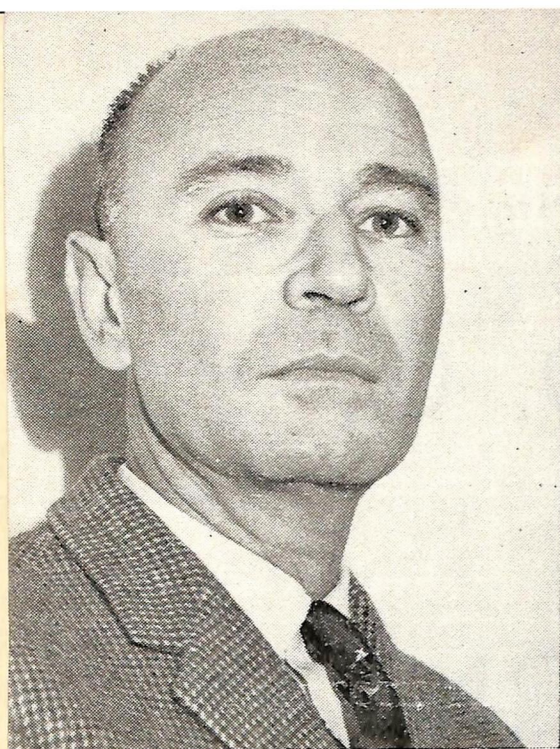
MANOEL THEATRE

VALLETTA — MALTA

THURSDAY, 7th FEBRUARY, 1963, at 8.30 p.m.

FRIDAY, 8th FEBRUARY, at 7.30 p.m.

SATURDAY, 9th FEBRUARY, at 8.30 p.m.



## PROFILE

**JOSEPH DE PIRO**

With the performance of this play we very much regret that we are bidding farewell to our hard working Chairman, Major J.C. Mompalao de Piro, R.M.A., who is to take up an appointment overseas.

Major Mompalao de Piro has been a member of the Malta Amateur Dramatic Club for over ten years and during that time has given loyal and unstinted help to his Club.

He has been a member of the Committee of Management for many years and last August was elected Chairman. He has acted in many plays and in 1962 produced two great successes *THE MORE THE MERRIER* and *THE AMOROUS PRAWN*. His last performance was as Iago in Shakespeare's *OTHELLO* in San Anton Gardens last July.

We are also sorry to be saying goodbye to Mrs. Mompalao de Piro, who has done the make up for numerous plays and was entirely responsible for the design, decor and painting of the set of *THE MORE THE MERRIER*.

To Major and Mrs. Mompalao de Piro and their family we would like to take this opportunity of wishing them good luck and "aurevoir".

### M.A.D.C. FUTURE PLANS

*THE IMPORTANCE OF BEING EARNEST* by Oscar Wilde will be presented under the direction of Michael Day in this theatre on March 20th, 21st, 22nd and 23rd.

Another play will be presented in early May, followed at midsummer by the Annual Shakespearean play. This summer marks the twenty-fifth anniversary of open air Shakespeare and it is planned that Hope Slessor, who initiated and produced the first of these will come to Malta to direct this play.

**A "SUPER" QUALITY  
NAIL POLISH COM LIPSTICK**



..... SHINES  
..... LASTS  
..... PLEASES  
MORE THAN  
A THOUSAND  
OTHERS.

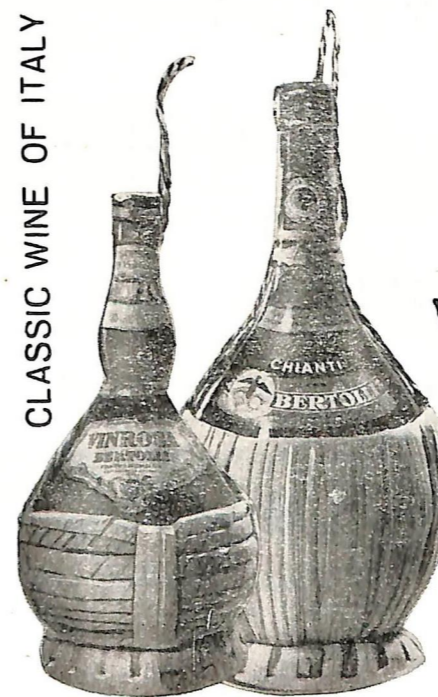
**ML**  
*Misslyn*

**I.M. LECHNER**

**AMERICAN LABS**

New York — Milan

CLASSIC WINE OF ITALY



**CHIANTI BERTOLLI**

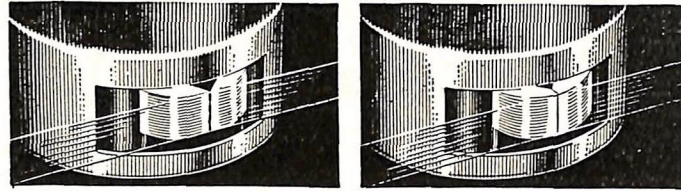
RED OR WHITE  
THE WINE THAT  
MADE CHIANTI FAMOUS

**VINROSA BERTOLLI**

**BERTOLLI**  
*Lucca*

## 'SCOTCH TAPES' FOR PERFECT RECORDINGS

### COMPARE!



Picture of a recorder head's contact surface, with critical centre gap eroded and enlarged by the wearing action of conventional magnetic tape.

Same type head, same period of use. But see how silicone lubricated "SCOTCH" Brand Magnetic Tape has saved the head from wear—assuring perfect response!

Read how **SCOTCH** tape's built-in dry lubrication looks after your recorder

The most vulnerable part of your recorder is the sensitive magnetic head—the tiny, precision-made part where the lack of proper lubrication can cause annoying wow, flutter and harmful friction.

Compare the two magnetic heads magnified above. See for yourself what lack of proper lubrication can do. Like the heads in your recorder, each head is made with an almost invisible "quarter-thou" gap over which tape passes. At left, abrasive action by conventional tape has worn down the head enough

to cause a frequency drop of a full octave. Now, look how "SCOTCH" Brand Magnetic Tape has saved the head on the right. No wear... so no loss of sound.

"SCOTCH" Brand Magnetic Tapes exclusive silicone dry lubrication process lets tape glide smoothly, safely over the magnetic heads. It is built in during manufacture and, therefore, this famous safety feature lasts the life of the tape. Ask your dealer for our booklet on tape tips.

Only **SCOTCH** tapes have silicone lubrication



are suitable for all makes of recorder

Most competitive Prices

# NANI

8-27, South Street,  
VALLETTA.

81, Tower Road,  
SLIEMA.

TELEPHONE: 25122

## MICHAEL HAIR STYLIST

(FORMERLY TONY GALEA)

201B OLD BAKERY STREET, VALLETTA.



## COLOUR ?

YOU WILL GET MORE OF IT ON

# GEVACOLOR

## WINTER JOURNEY

Personalities Of The Play

The Author — CLIFFORD ODETS

One of America's best playwrights. His taut build up through dialogue of the relationships of the three main characters is only equalled by his writing in "The Golden Boy".

Originally named "The Country Girl" the name was changed to "Winter Journey" when Sam Wanamaker brought it over from New York to the St James Theatre London in 1952.

The Director — SAM WANAMAKER

Directed in New York and played "Bernie Dodd" in London. His example of direction and acting is followed here by Edward Chittleburgh. Sam Wanamaker never went back to America. He had for a time a theatre of his own at Liverpool. He was seen in the West End success "The Rainmaker". Another success was Iago at Stratford. He has been greatly influenced by the methods of Stanilasky.

Leading Lady — GOOGIE WITHERS

After ten years of acting and only three previous West End appearances Googie Withers reached the zenith of her career as Georgie Elgin. She continues to enthral playgoers on stage and screen, especially in the lead in "The Deep Blue Sea". She is at present touring Australia.

Leading Man — SIR MICHAEL REDGRAVE

It is hardly necessary to list Sir Michael Redgrave's achievements, as he is so famous. His latest performance as Uncle Vanya at Chichester was sensitive and exquisite but he played the drunkard in "Winter Journey" quite perfectly.

We hope the three M.A.D.C. players — Edward Chittleburgh, Barbara Fade and Ronald Baldwin — may offer a worthy interpretation of the play.

# WINTER JOURNEY

## Characters In Order Of Their Appearance

BERNIE DODD, A Stage Director . . . . . *Edward Chittleburgh*

LARRY, Stage Manager . . . . . *Alec Finch*

PHIL COCK, Producer . . . . . *Benedick Sandham*

PAUL UNGER, Playwright . . . . . *Julian Loring*

NANCY STODDARD, An Actress . . . . . *Pamela Kelly*

FRANK ELGIN, An Actor . . . . . *Ronald Baldwin*

GEORGIE ELGIN, Frank's Wife . . . . . *Barbara Fade*

RALPH, Frank's Dresser . . . . . *Denis Bell*

### *The Play Directed By*

**EDWARD CHITTLEBURGH**

### *Designer*

**ROBERT DICKERSON**

## ACT I

### SCENE I

*The stage of a New York theatre. — Morning.*

### SCENE II

*The Elgins furnished room in mid-Manhattan. — Later the same day.*

### SCENE III

*The stage. — Ten days later. — Late at night.*

## ACT II

### SCENE I

*The Elgins' room. — A week later. — Early morning.*

### SCENE II

*A dressing room in a Boston theatre. — A week later. — After midnight.*

### SCENE III

*The Boston dressing room. — A few nights later. — After midnight.*

## ACT III

### SCENE I

*The Boston dressing room. — The following day. — Early afternoon.*

### SCENE II

*A dressing room in a New York theatre. — Some weeks later. — Evening.*

Stage Manager . . . . .	ROBIN LATTER
Assistant Stage Manager . . . . .	VICTOR SOLER
Effects . . . . .	MICHAEL DAY
Properties . . . . .	MARGARET BALDWIN
Lighting . . . . .	BRIAN FINCH
Scenery built by . . . . .	SALVATORE TESTA
Wigs by . . . . .	L. and H. NATHAN, London.
Box Office for M.A.D.C. . . . .	DENNIS CARVER
Box Office for Manoel Theatre . . . . .	MARGARET DEGIORGIO
Head Electrician . . . . .	Manoel Theatre . . . . . CHARLES TABONE
Asst. Electrician . . . . .	Staff . . . . . JOHN LAUS
Head Carpenter . . . . .	. . . . . JOSEPH BORG

# ROTHMANS KING SIZE



*Really satisfies*

## THE MALTA AMATEUR DRAMATIC CLUB

Founded 1910

*(Affiliated to the National Operatic and Dramatic Association)*

*President:*

His Excellency Sir Maurice Dorman, G.C.M.G., G.C.V.O.,  
Governor of Malta.

*Vice-Presidents:*

The Honourable Dr. G. Borg Olivier, LL.D.,  
Prime Minister of Malta.

Admiral Sir Deric Holland-Martin, K.C.B., D.S.O., D.S.C.,  
Commander-in-Chief, Mediterranean.

Air Vice-Marshal J.G. Davis, C.B., O.B.E.,  
Air Officer Commanding, Malta.

Major General The Lord Thurlow, C.B.E., D.S.O.,  
General Officer Commanding, (Malta and Libya).

*Chairman of Committee:*

Mr. A.R.J. Baldwin, R.N.V.R., (Ret.).

*Committee:*

Commander D.L. Bell.

Commander A.D. Carver, O.B.E., R.N.

First Officer M. Cheyney, W.R.N.S.

Lieut. Commander A. Finch, R.N., (Hon. Treasurer).

Mrs. P. Morton.

Commander A. Nicoll, R.N.

Mr. B. Sandham.

Miss E. Warren, M.B.E., (Hon. Secretary).

Club Headquarters: Santa Venera Hamrun.

Hon. Secretary: Telephone: Rabat 107.

## MANOEL THEATRE MANAGEMENT COMMITTEE

Colonel G. C. GATT — *Chairman.*

Notary Dr. V.M PELLEGRINI, LL.D. — *Hon. Treasurer.*

Mr. A. AGIUS FERRANTE, L.P. — *Hon. Secretary.*

Mrs. INES BONELLO CASHA  
Mr. GRAHAM BINNS, M.A. (Oxon) } *Members.*

Mr. MICHAEL KISSAUN -- *Manager*

*Smoking is not permitted in the Auditorium.*

The Management reserve to themselves the right to make any change, vary or omit any part of the programme without previous notice.

*Patrons are reminded that the taking of photographs during the performance is not allowed.*

All seats bookable in advance (including gallery).

Seats can be reserved for organised parties on application.

## F O R T H C O M I N G   E V E N T S

\*            \*            \*

A Play by the "Kumpannija Maleth" on the 16th and 17th February.

\*            \*            \*

A Play by the M.A.D.C. from the 20th to the 23rd March.

\*            \*            \*

"Alvaro Fontana" — a Play in April.



## EXCURSION FARES

**PALERMO**

Exc. Fare: £13. 18.

**NAPLES**

Exc. Fares: £16. 11.

**ROME**

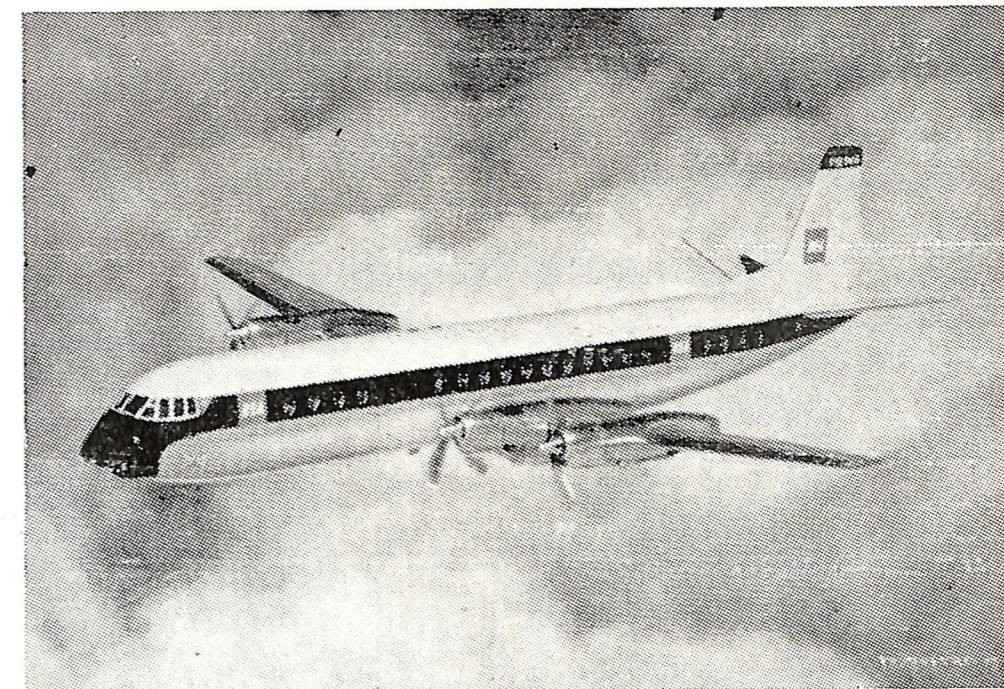
Exc. Fare: £19. 17.

**CATANIA**

Exc. Fare: £8. 14.

**LONDON**

Midweek Night Fare: £33. 13.



BOOK THROUGH

## MALTA AIRWAYS

285 KINGSWAY VALLETTA

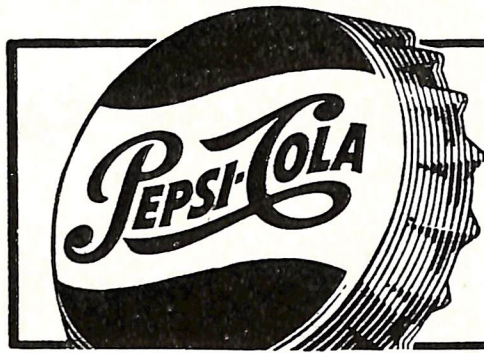
Tel. Central: 21451 (5 lines)

*BOOK YOUR CAR WHEN YOU BUY YOUR BEA TICKET*



**BEA'S CAR HIRE PLAN** is available at your 70 centres on the Continent and in a number of cities within Britain.

No deposit required against possible damage — Insurance Cover



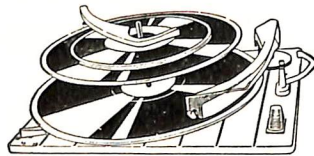
The refreshment  
of  
friendship

**HENNESSY**  
MAINTAIN THE LARGEST STOCK OF  
**COGNAC BRANDY**  
IN THE WORLD



**Perpetuum-Ebner**

*Highest German achievement  
in Record-Players*

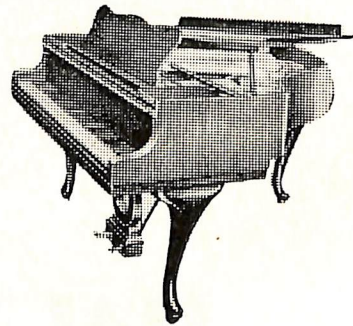


**NANI**

8 South Street, Valletta.

81 Tower Road, Sliema.

**PIANOS**



*FOR SALE OR  
FOR HIRE*

**NANI**

8 South Str., Valletta

81 Tower Rd., Sliema

