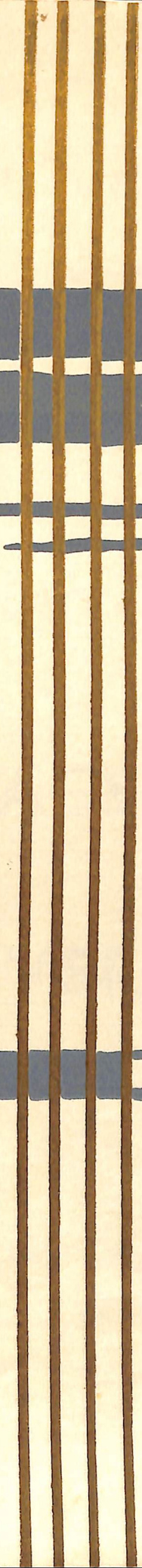


RADA



1732 1960



# Mangoel Theatre

90

CASHMORA

THE MANOEL THEATRE MANAGEMENT  
COMMITTEE

*PRESENT*

The Royal Academy of  
Dramatic Art

*IN*

**"VILLAGE WOOING"**

**AND**

**"OVERRULED"**

*BY*

G. B. SHAW

Saturday 13th, Sunday 14th, Monday 15th MARCH, 1965  
at 7.30 p.m.

MATINEE — Sunday 14th at 3.30 p.m.

New, exciting look!  
with

## eye dew

### BLUE EYE DROPS

EYE DEW instantly brings your eyes the new exciting look, gives them cool blue whites, highlights your own eye colour.

A **MAKE-UP GUIDE** for your eyes **FREE** with each bottle  
**AT YOUR CHEMIST**

Trade Enquiries 24866

Agents: **G. CUSCHIERI & CO. LTD.**, 63/64, Britannia Street, Valletta — Dial 24866

HAVE YOU TRIED  
**EGG-NOG**  
THE  
EGG AND BRANDY  
SHAMPOO

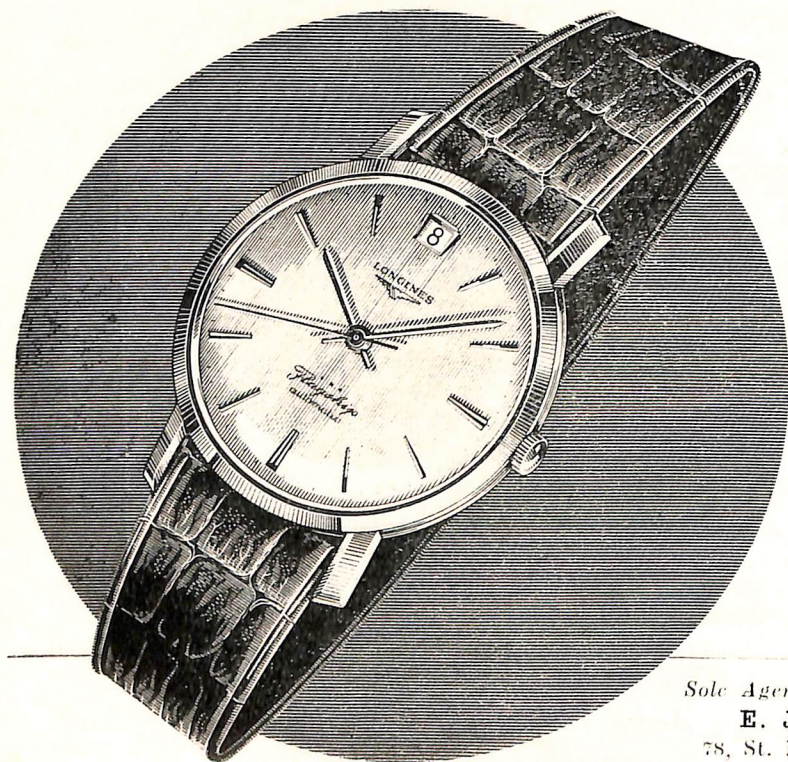
Available in packets and 2 oz., 10 oz., and 20 ozs. packs

**TRY IT TO-DAY**

USE

## EYLURE

ARTIFICIAL  
FINGER NAILS & EYELASHES  
FOR THAT **EXTRA SLENDER ELEGANCE**



NEW FLAT AND AUTOMATIC  
MOVEMENT — WITH OR WITHOUT  
CALENDAR — SHOCK RESISTANT —  
ANTIMAGNETIC — CENTRE SWEEP OR  
SMALL SECOND HAND

Execution: 18 carat gold and 18 carat gold DeLuxe  
Waterproof models: stainless steel; 200 microns  
goldplated; 18 carat gold and 18 carat gold DeLuxe

## LONGINES

\*\*\*  
*Flagship*  
automatic

Sole Agents:  
**E. J. PACE BROS. & CO.**  
78, St. Mary's Street, Sliema — Malta  
Tel. 34575



FOR SALE

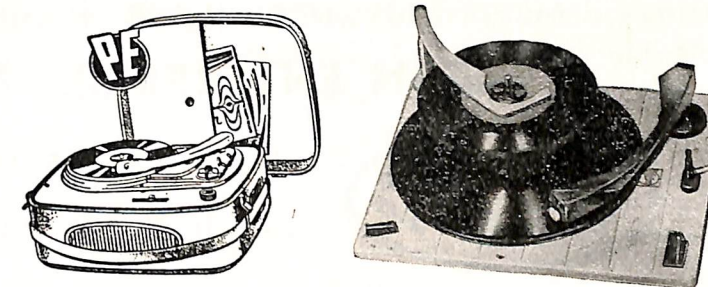
OR

FOR HIRE



**Perpetuum-Ebner**

Highest German achievement  
in Record - Players



## NANI

8 South Street, Valletta.

81 Tower Road, Sliema.

unmistakable  
the world  
over  
since  
1830

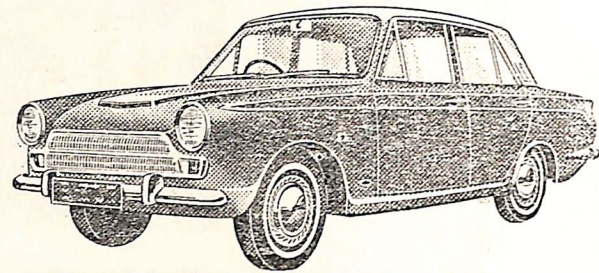


**TEACHER'S**  
HIGHLAND CREAM  
**SCOTCH**  
**WHISKY**



Trade Enquiries: Tel. 24109

*Travel Anywhere Refreshed and in Comfort  
in the New 1965*



## CORTINA

THE MOST RUGGED CAR IN THE LOW PRICE FIELD.  
Now fitted with Luxurious interior features, front wheel disc  
brakes and "AEROFLOW" Ventilation System.

### GASAN ENTERPRISES LIMITED



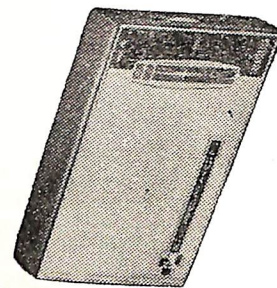
20, KINGSWAY, VALLETTA — 25343 - 28124

RUE D'ARGENS, GZIRA — 30001 - 30002

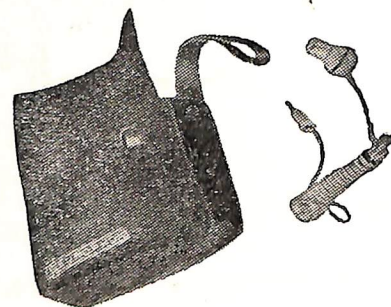
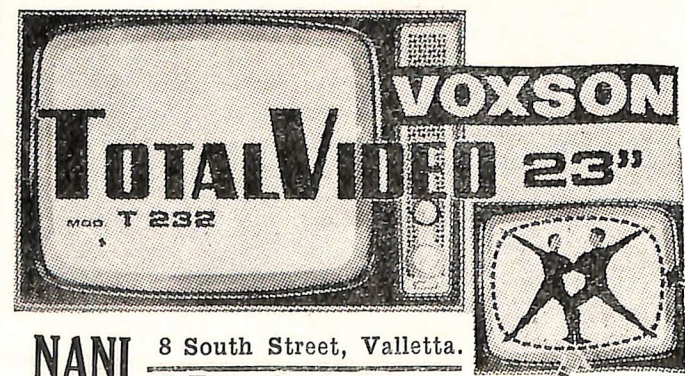


SCOTCH  
TAPES

TRANSISTOR  
POCKET RADIOS



TV



**NANI** 8 South Street, Valletta.  
81 Tower Road, Sliema.

## THE ROYAL ACADEMY OF DRAMATIC ART

The Academy was founded in 1904 by Sir Herbert Beerbohm Tree, and in the first years of its life carried on operations in the dome of the famous Her Majesty's Theatre, Haymarket, London. Shortly after removal to Gower Street — in the neighbourhood of University College — the control of the Academy was vested in a council composed of distinguished actors, writers and men of the theatre. In 1909 Mr. Kenneth Barnes was appointed Principal. He held this office for forty-six years receiving his Knighthood in 1930. His Majesty King George V granted the Academy its Royal Charter in 1920.

Sir Kenneth Barnes retired from the position of Principal in 1955, and the Council appointed Mr. John Fernald as his successor. Mr. Fernald has spent over a quarter of a century in the English theatre, first as an actor and subsequently as a producer.

Last year was the Diamond Jubilee of the Academy, and in November a Gala Performance was presented in the presence of their Majesties the Queen and Queen Elizabeth the Queen Mother.

The Academy's present two-year course provides a thorough stage training and admits only pupils intending to take up the theatre as a professional career. The course is planned so that a year of thorough basic technical training is followed by a year of active acting in the Academy's Vanbrugh Theatre before members of the public. From the possession of this theatre springs the Academy's ability to turn out skilled professional performers who have learnt their craft through the actual practice of it.

Apart from visiting Malta, R.A.D.A. companies have toured in Switzerland, France, Norway, Holland, Germany, and even as far afield as Arizona, U.S.A., where a company is now taking part for the second year in a festival of "Shakespeare on the Desert".

# "VILLAGE WOOING"

by

**BERNARD SHAW**

Characters:-

'Z' . . . . . MERILYN MARSHALL  
'A' . . . . . PETER DENNIS

Conversation One:

The 1st Class boat deck of the Express Patagonia.

Conversation Two and Three:

The Village Shop and Post Office.

# "OVERRULED"

by

**BERNARD SHAW**

Characters:-

Mrs. Juno . . . . . JAYNE SOFIANO  
Gregory Lunn . . . . . PETER DENNIS  
Juno . . . . . JOSEPH BRYANT  
Mrs. Lunn . . . . . CATHERINE CREWE

Scene: The lounge of a seaside hotel.

*Directed by* **EVE SHAPIRO**

*Settings designed by* **DOUGLAS HEAP**

Production Manager } . . . . . PETER WOODHAM  
Deputy Stage Manager } for the . . . . . MICHAEL J. LOVEGROVE  
Assistant Stage Manager } R.A.D.A. . . . . ANTHONY COVELL

Electrician . . . } . . . . . JOHN LAUS  
Assistants . . . } Manoel Theatre . . . . . E. DALLI, F. MIFSUD

*Scenery painted by Robert Smith  
and built by the Manoel Theatre Staff.*

---

Costumes by . . . . . C. & W. MAY LTD., and M. BERMAN LTD.,  
and the R.A.D.A. WARDROBE  
Shoes by . . . . . ANELLO & DAVIDE  
Wigs by . . . . . WIG CREATIONS LTD.

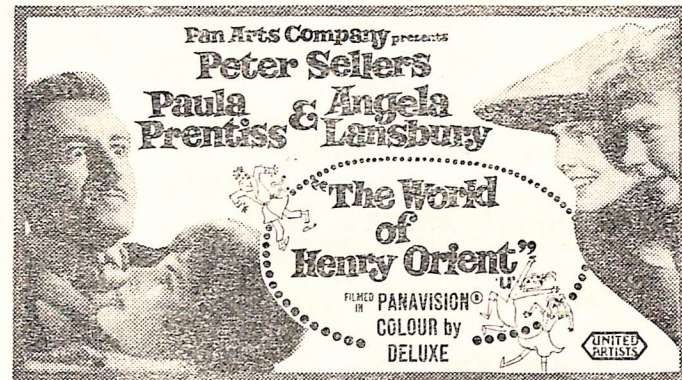
---

*The Manoel Theatre Management Committee wish to thank:*

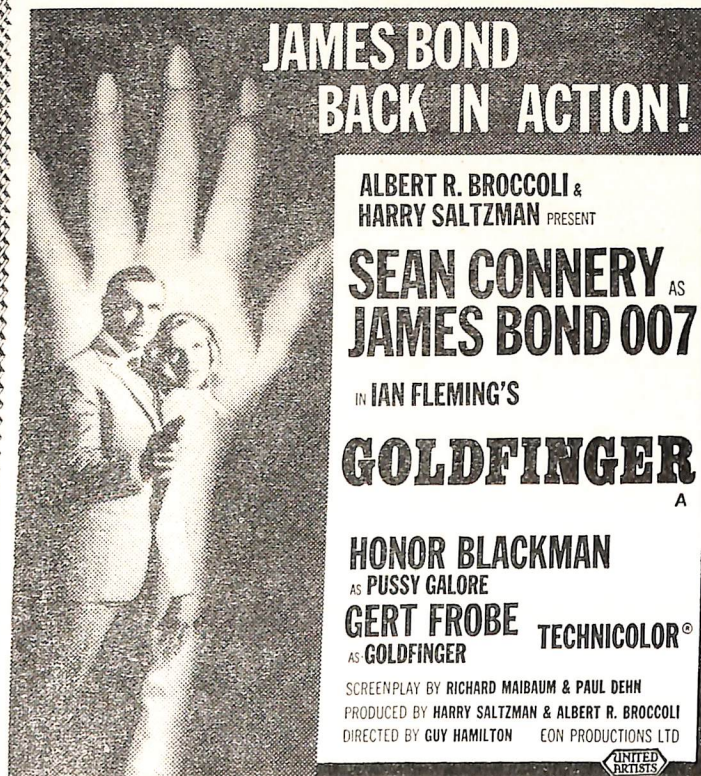
Messrs. Gio. Batta Delia for the loan of furniture.  
Messrs. Gasan Enterprises Ltd. for the loan of a Philco Radio.  
Messrs. Malta Tobacco Coy. for supply of Cigarettes.

NEW FILM RELEASES BY THE  
MALTA UNITED FILM CORPORATION LTD.

SHOWING FROM FRIDAY 12th MARCH AT THE  
EMBASSY THEATRE - VALLETTA



STEP INTO THE  
"WORLD OF HENRY ORIENT"  
AND MEET TWO JUNIOR  
SIZE MISSES AND ONE  
KING SIZE NUT!  
Persons under 16 not admitted



GALA PREMIERE  
THURSDAY 18th MARCH  
at 8.45 p.m.  
IN AID OF THE  
M.C.T.B. FUND  
ALHAMBRA  
THEATRE  
SLIEMA  
PRICES:- 12/6 (Black Tie)  
10/-, 7/6, 5/-, 3/6, 2/8  
BOOKING NOW OPEN  
AT THE  
ALHAMBRA THEATRE  
PERSONS UNDER 16  
NOT ADMITTED

For Modern Hairstyles, New  
Methods in Permanent Waving,  
Make Up, and Manicure

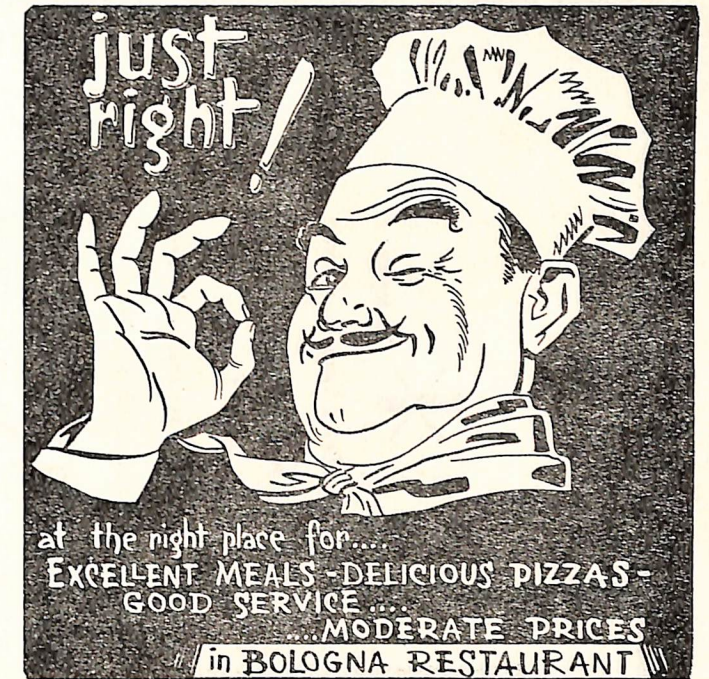
visit

**MICELI'S**  
LEADING LADIES  
HAIR STYLISTS

5/1, MERCHANTS STREET,

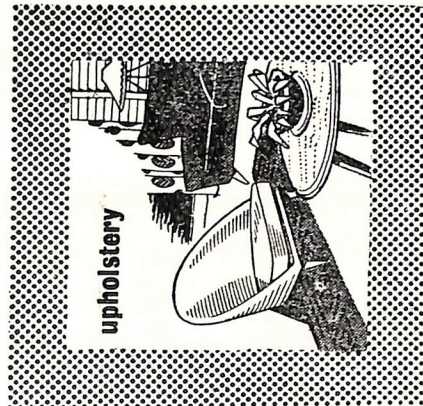
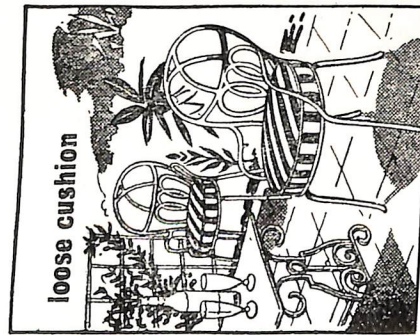
VALLETTA

Telephone: 28783.



Swiss House.

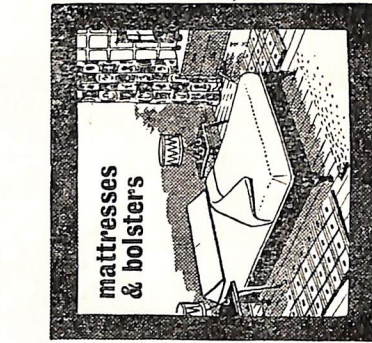
FOR  
BETTER  
DRESS FABRICS



Dunlopillo

is made from Latex foam—the softest lightest and yet most firmly resilient of all cushioning products. It is easy to handle, is vermin resistant, self-ventilating in use and thoroughly hygienic.

... make every room luxurious



Air cooled and free from dampness in extremes of heat and humidity—it remains a lasting and most satisfying economy.

with **Dunlopillo**  
Comfort

Phone: Dial 31937

JOE M. GALEA  
115 RUE D'ARGENS  
MSIDA

## MANOEL THEATRE MANAGEMENT COMMITTEE

Colonel G. C. GATT — *Chairman.*

Notary Dr. V.M. PELLEGRINI, LL.D. — *Hon. Treasurer.*

Mr. A. AGIUS FERRANTE, L.P. — *Hon. Secretary.*

Mrs. INES BONELLO CASHA — *Member.*

Dr. VICTOR A. MERDIECA, LL.D. — *Member.*

Mr. MICHAEL KISSAUN — *Manager.*

**IF** you are a THEATRE LOVER;

**IF** you wish to help in preserving this National Monument;

**IF** you wish to encourage local talent in the pursuit of all theatrical arts.

join

## THE MANOEL THEATRE CLUB

### FORTHCOMING EVENTS

COMBINED SERVICES BANDS — "Orchestral Concert" — 17th March 1965.

TEATRO STABILE TRENTO E BOLZANO — "Italian Prosa" 19th to 25th March 1965.

BRITISH COUNCIL — "Orchestral Concert" — 3rd April 1965.

CARMEN CZERNIK — "Piano Recital" — 6th April 1965.

SOUTHAMPTON UNIVERSITY THEATRE GROUP — "Pinedus Affair" and "Look Back in Anger" 19th to 22nd April 1965.

M.A.D.C. — "The Dark is Light Enough" — 29th, 30th April and 1st May 1965.

Late comers will not be admitted to the Auditorium.

Smoking is not permitted in the Auditorium, in Boxes, or in the Gallery.

The Management reserve the right to vary or omit any part of the programme without previous notice.

Patrons are reminded that the taking of photographs during the performance is not allowed.

Children even when accompanied by their parents, will be required to occupy individual seats.

**Dresswear**  
*by*  
**Bernards**

Hand cut and tailored  
for you, or read to wear  
from £16. 16s. 0d.

Craftsman Tailored in  
Fine Barathea



Spread all your clothing costs over a period.  
Payment may be made monthly, at no extra cost  
by **BANKERS ORDER.**

*FOR ALL YOUR CHRISTMAS GIFTS TOO!  
LATEST STYLES AND SHADES IN SHIRTS, TIES, KNITWEAR.  
THERE'S HELP IN SELECTION AND ALL THE TIME IN THE  
WORLD TO DECIDE . . . .*

**BERNARDS of HARWICH**

Ordinance Str., and 26 South Str., Valleta, — 18 The Strand, Sliema.

