



1732

Two One-Act Plays
by M.A.P.C.

24/27 May 1973

446

MANOEL
THEATRE

PELLERINI

*The face you'll never forget . . .
... comes on a Seiko watch*



The beauty of a jewelled-lever Seiko watch is easy to see. But inside is the real beauty Anti-magnetic hair springs. Unbreakable mainsprings. Shock-resistant operation And nontilted balance wheels for greater accuracy. That's why every Seiko watch is a

precision timepiece for years of dependable service. The man or woman who owns a Seiko watch never forgets it. Don't forget it for gifts, either. Seiko from the world's largest independently-owned manufacturer of jewelled lever watches, founded in 1881, and the producer of the official timers for various international sporting events.

SEIKO

A. VELLA

48, Britannia Street (corner with Strait Str.)
Valletta



BY APPOINTMENT TO
ADMIRAL the EARL MOUNTBATTEN OF BURMA

CARMELA CASSAR

(Est. 1893)

Malta Lace Manufacturer

18, KINGSWAY, VALETТА

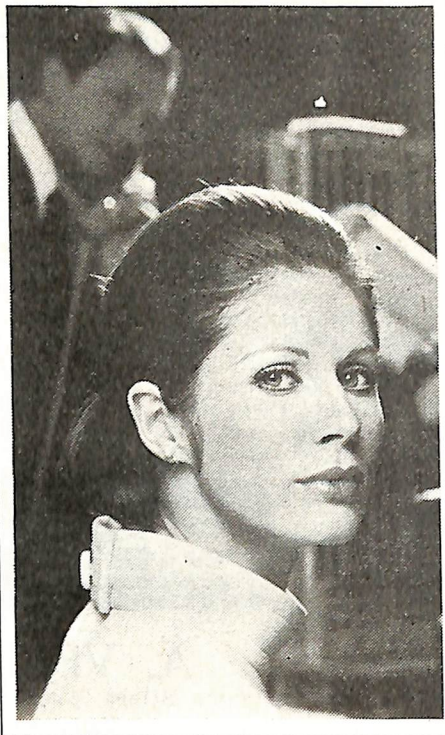
TEL. ADDRESS ALEMRAС MALTA

DIAL 24654

ANTIQUES. JEWELLERY. GOLD & SILVER FILIGREE WORKS.
SOLID SILVER & E.P.N.S. GOODS. GUBELIN WATCHES. SPORTS
CUPS. MARCASSITE. CULTURED & POMPADOUR PEARLS. ROYAL
GRAFTON BONE CHINA. PEWTER TANKARDS. CROSS PEN SETS.

Tei: 24654

No connection with any other firm



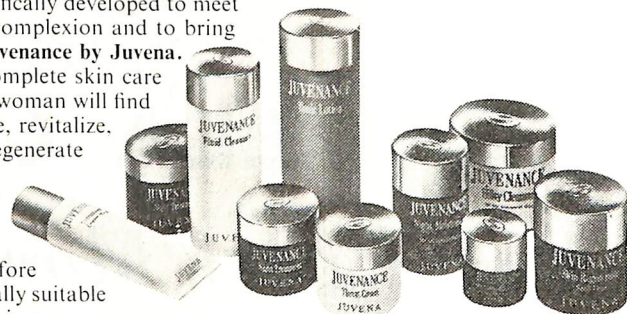
JUVENA

The famous and successful Swiss Beauty Preparations now available in Malta!

For the woman whose beauty requires that touch of extra-special care Juvena has created a range of skin-grooming preparations specifically developed to meet the needs of the more demanding complexion and to bring its natural beauty to full flower: **Juvenance by Juvena.**

The Juvenance range provides complete skin care 24 hours a day. The discriminating woman will find here everything she needs to cleanse, revitalize, moisturize, protect, nourish and regenerate her complexion.

Juvenance preparations are completely free of hormones and all other substances not fully compatible with the skin. They are therefore ideal for all types of skin and especially suitable for more delicate, sensitive complexions.



JUVENA

now available at:

rosina depares - Valletta — salon hilton - malta hilton
ta' xbiex pharmacy and beauty parlour - ta' xbiex

THE MALTA AMATEUR DRAMATIC CLUB

Patron: HER MAJESTY THE QUEEN

presents

Two One-Act Plays

IN CAMERA

by J. P. SARTRE

and

TEN NIGHTS IN A BAR ROOM

by W. W. PRATT

at the

MANOEL THEATRE, VALLETTA

May 24th to 27th 1973

IN CAMERA

Directed by MARIO AZZOPARDI *Mario Azzopardi*

VALET *pala* JOE DELIA
 GARCIN *Paul Xuerab* PAUL XUEREB
 ESTELLE *Elsa Romei* ELSA ROMEI
 INEZ MADELEINE ATTARD MONTALTO

The action of the play takes place in an ante-room to Hell.

Models: S. Attard Montalto

INTERVAL
Twenty Minutes

TEN NIGHTS IN A BAR ROOM

Directed by Mistress M. PLOTKIN *Margaret Plotkin*

ROMAINE *Joe Mompalao* Mister J. MOMPALAO de PIRO
 SIMON SLADE Mister E. FRANKCOM
 FRANK SLADE *Steve Singleton* Mister S. SINGLETON
 HARVEY GREEN *Mister J. Izzo* Mister J. IZZO
 MRS. SLADE *Mistress M. Lyddiard* Mistress M. LYDDIARD
 TOMMY *Master S. Easton* Master S. EASTON
 JOE MORGAN *Mister C. Easton* Mister C. EASTON
 LITTLE MARY MORGAN *Mistress J. Caruana* Mistress J. CARUANA
 FANNY MORGAN Mistress M. ATTARD MONTALTO

The action of the play takes place successively in a bar room in Cedarville, a private residence, the bar room again, and finally in the street.

FOR the MALTA AMATEUR DRAMATIC CLUB

Stage Manager EDDIE FRANKCOM

Assistant Stage Manager *Judy Murdoch* JUDY MURDOCH

Musical Director *Lee Spiteri* LEE SPITERI

Set Design and Construction TONY DEMICOLI
ROBIN BECK

John Galea Naudi JOAN GALEA NAUDI

Lighting Design ALBERT MARSHALL

Stage Crew RONNIE LAZARD

Make-up JOHN SCHRANZ

Publicity ROBIN BECK

Booking VERDA and CAMERON JARVIS

Lee Spiteri is appearing by kind permission of Mr. Benny Muscat of the Whisper Farmhouse and the Pescatore Restaurants.

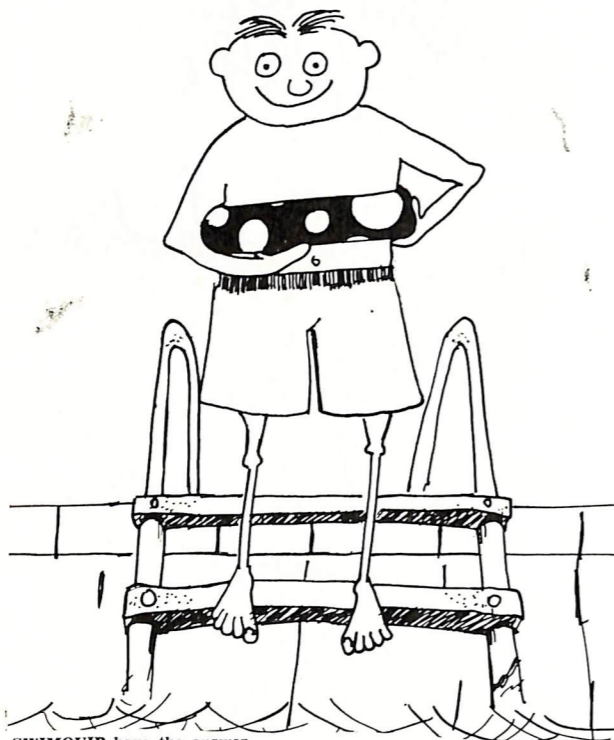
FOR the MANOEL THEATRE

Booking Office M. BUGEJA

Electrician V. LAUS

Carpenters E. DALLI, F. MIFSUD

To swim or not to swim?



SWIMQUIP have the answer.

The moment you decide to install a swimming-pool in your home lots of questions spring to mind. To mention just a few, there's a design to choose; you'll need a team of reliable technicians to put the swimming-pool together; and of course maintaining the pool in a good working order matters a great deal.

Don't let these questions bother you. Swimquip have the answers. They offer a complete service in swimming-pool construction and maintenance. Backed by a reliable team of swimming-pool specialists, trained overseas, Swimquip ensure that the service you get is indeed first class. Next time you're thinking of swimming-pools, contact Swimquip.

SWIMQUIP — Efficient and Reliable.

Suppliers of filtration, equipment and a wide range of all pool chemicals and accessories.



Poseidon Pools International Ltd.
167 Constitution Street Mosta.
Tel. 43141, 45599



Members of the Swimming-Pool & Allied Trades Association.

THE PLAYS

In Camera

Three 'souls', guilt-ridden, ashamed and irascible, are escorted into a chamber representing hell: but it is not the hell they expect. The conventional instruments of torture are conspicuously missing. However, it does not take them long to realise that "Hell is other people".

The cell-like room is a symbol of a perennial sense of guilt and senseless judgement. What is more, it is always brightly lit, suggesting the torment of this perpetual mental awareness of sin, which grates at the minds of the three 'prisoners'.

"Fait comme un rat" — trapped like a rat. On one level this is the 'trap' of the characters' past lives as construed by themselves; on a more important, defiant level, this is the 'trap' thought up by a deity who, according to Sartre, is capricious indeed.

Ten Nights in a Bar Room

This American Temperance melodrama was typical of the 1890's; it was usually performed by travelling players whose repertoire would include one of these kinds of plays. Their aim was to warn the public of the "evils of alcohol", much in the same way that the morality play showed that "right" will triumph.

The characters in the Temperance Drama were stock. Their costumes and their entrances in the play told the audience what to expect, whether they were 'good' or 'bad'.

This type of melodrama required the actors to portray the parts as 'larger than life', and although today this may seem somewhat exaggerated, this is what the avid theatre-goers of the time came to expect.

However, this version of the play has been slightly altered for the modern audience.

**MANOEL THEATRE MANAGEMENT
COMMITTEE**

Mr. GINO MUSCAT AZZOPARDI — *Hon. President.*

Mr. A. AGIUS FERRANTE, L.P. — *Chairman.*

Miss MARIE LOURDES BONNICI —

L.R.S.M., L.Mus.L.C.M., F.L.C.M. — *Hon. Treasurer.*

Mr. JOSEPH GRIMA — *Hon. Secretary.*

**'...there's more to
be said for one bottle
of Teacher's than
a case of ordinary
whisky'**



TEACHER'S
HIGHLAND CREAM
SCOTCH WHISKY

Ah, unmistakable!

Trade Enquiries: 229 St. Paul Street, Valletta. — Tel. 24109

