

Botanical
Excursions.

J. Borg

Excursion on the 3rd May 1908.

Verdala Gds and Boschetto

Medicago tribuloides, Desr. var & *truncatula* (Gaertn.)

Medicago minima, Desr., var & *longisetata* D. C.

= *M. recta*, W.

Crupina vulgaris, = *C. Crupinastrum*

Medicago lupulina

Trifolium congestum

Valpura myuros.

Serapias parviflora

Anacamptis pyramidalis.

Orchis fragrans.

Orobanche lavandulacea (*Kopsia lavandulacea*)
on *Psolarea bituminosa*

Orobanche minor on *Parietaria*, *Smyrnium* etc.

Helianthemum thymifolium

Lathyrus sphaericus (in the ditch leading to
Public Gds)

Trisetum aureum

Aira Cupaniana.

Linum strictum and *L. gallicum*.

Carex divulsa

Myrtus communis

Rubia peregrina
Carduncellus tingitanus
Vaillantia hispida
Ononis minima
O. nitissima

} Public Eds
} Ta Rapa

Excursion on the 11th May 1908 to Verdala & Boschetto

Cnicus syriacus
Orophordon tauricum
Juncus conglomeratus
Galactites tomentosa
Carduus tenuiflorus.
C. marmoratus
Delphinium Staphisagria

Boschetto Valley.

Excursion on the 24th May 1908.

Cynosurus cristatus
Centaurea fuscata
Brignolia pastinacaefolia
Trifolium angustifolium.
Sylibum marianum.
Lotus creticus
Allium sp.?
Gastidium lendigerum.

Boschetto?

Excursion on the 25th May 1908. Niedzwiedza

Cichorium divaricatum.

Hypericum humifusum

H. crispum

Trifolium angustifolium

Vicia

Rubus dalmanicus

Gastidium leudigerum,

Melica

Sclerochloa,

Potentilla

Phlomis fruticosa

~~*Pulegium*~~ *Pulegium*, and its white variety (rare)

Carex divulsa

Tenerium flavum

Tenerium majus

Smilax aspera in fruit.

Asparagus spinosus

Anacamptis pyramidalis

Convolvulus

Asteriscus spinosus

Centaurea solstitialis and *fuscata*

Sedum amplexicaule.

S. heptapetalum.

Anthyllis Hermanniae.

Trifolium repens, spumosum and stellatum.

Plantago serrulata.

Rosa sempervirens floribunda

Pyrus communis, P. amygdalifolia

Siema 26-5-8. (Qui-si-Jana.)

Frankenia laevis, L.

Li Klin. 28th May 1908.

Kentrophyllum lanatum,

Carlina,

Carduus marmoratus.

Centaurea melitensis

Centaurea nicaensis.

Stipa tortilis

Echium calycinum.

Sideritis romana

Andrachne telephioides

Cichorium spinosum, and *divaricatum*,

Ramla (Gozo) 1st June 1908.

Eryngium maritimum, *Panicum*
maritimum, *Scolymus hispanicus*, *Ononis*
£, *Senecio cineraria*, *Euphorbia* sp.
Cichorium spinosum, *Cynara Cardunculus*
& *Tamarix gallica*, *Capparis*, *Teucrium*
flavum, *Ononis spinosa*, *Malope malachoides*
Senecio crithmoides, *Silene inflata*

Marsalforno - Gozo. 1st June 1908. (*Ranunculus spinosus*)

Salsola Kali and vgr *Tragus*
Ononis spinosa, *Mesembryanthemum*
nodiflorum, *Ononis*, *Senebiera coronopus*,
Samolus Valerandi, *Trifolium fragiferum*,
Scolymus hispanicus
and *grandiflorus*, *Cynara Cardunculus*,
Palmeria spinosa, *Spergularia*,
Menha Pulegium, *Senecio crithmoides* + *crithmoides*
Carlina gummifera and *scicula*, *Orepis*,
Hyoseris & grasses
Silene sericea, *Ranunculus spinosus* L.
Alex europaeus, L. (rare)

Stena Qui si Lana 5-6-8.

Rapistrum rugosum, *Hyoscyamus albus*,
Mesembryanthemum nodiflorum (v. common)
Frankenia pulverulenta and *F. laevis* and
F. hirsuta. *Tetragonia expansa* (nat.)

Brochetto - 9-6-8.

Ononis nitissima, *Anchusa italica*, *Medicago*
Helminthia echioides.

Saline 16th June 1908.

Suaeda, *Centaurea melitensis*,

Bryophthalmum maritimum, *Carlina*

Equisetum, *Helminthia echioides*.

Linaria graeca and *spuria*, *Ridolfia*
segetum, *Senebiera coronopus*, *Trifolium*

repens, *Juncus acutus* and *lamprochlorus*

mentha Pulegium, *Brythraea spicata*, *Carex*

Cyperus, *Lotus decumbens*

Cistaceira, *Kentrophyllum lanatum*

Bressa cretica, *Phragmites*,

Mesembryanthemum nodiflorum

Serrafalcus

Gnien-el-Gbir. (Gnien tal Iskof) 22nd June 1908.

Callistegia silvatica

Pulicaria dysenterica

Phragmites

Salix pedicellata et *S. fragilis*

Corvolvulus arvensis

Acanthus mollis, *Linaria gaecca*, *L. spuria*,
Mentha rotundifolia (New).

Moschetto. 22nd July 1908

Carlina sicula

C. lanata

C. corymbosa globosa.

Agrostis spica-Venta, *interrupta*.

Helminthia echinoides

Erythraea spicata.

~~Milium~~ *Panicum repens*.

Senecio

Pulicaria dysenterica.

Mentha rotundifolia (Gnien el Gbir) New

Bahar-ic-Ciazhak. ^{at} 1. August 1908.

Carlina gummifera, *Carlina sicula*,
C. lanata & *C. corymbosa globosa*.
Asperula aristata.

Boschetto. 3rd August. 1908

Epilobium virgatum (1 specimen)
Andropogon Ischaemon. (new)
Glyceria distans festucaeformis,
(new.)

Gozo. 10th August 1908.

Ingiar-ix-Xini.

Spartium pinnaceum (new)
Vitex Agnus Castus, *Pistacia Lentiscus*,
Rhamnus oleoides, *Crataegus laciniata*,
Jasomia camphorata, *Sunda viscosa*,
Cynoglossum pictum, *Calamagrostis*
epigejos, *Brachypodium sylvaticum*,
Agrostis spica-venti interrupta, *Hypericum*
aegyptiacum heterostylum (common). *Erica*
multiflora, *Rubus damaticus*.

Via Muziarro. 10-8-8.

Lanthium spinosum.

Via Marsalforno 10-8-8.

Brythraea spicata.

Plantago Lagopus

St Paul's Bay 17th August 1908.

Carlina gummifera, *C. corymbosa*, *C. sicula*

Calamintha parviflora, *Scabiosa marit: grandif.*

Ambrosia maritima, *Bryugium maritimum*,

~~*Atriplex Halimifolius* (1 sp.)~~
~~*Abrot. portulacoides*~~, *Suaeda crithmoides*

and *Crithrum maritimum*, on sea-shore.

Psales: ^{*Glaucium lythrum*} *Brythraea spicata*, *Panicum* sp.

Calamagrostis spigejos, *Cynodon Dactylon*.

Rubus fruticosus var *ulmifolius*.

Excursion to Fontahleb, 24th August 1908

Veronica Beccabunga.

Panicum Crus-galli

P. repens.

Epilobium tetragonum (paraflorum)

Salix aurita var. *pedicellata*

Samolus Valerandi

Vitex Agnus Castus

Juncus conglomeratus

Typha latifolia

Carex hirsuta?

C.

C.

Polygonum lapathifolium L.

var. *femiflorum* Presl. o *punctatum*, Gmel

Rosmarinus officinalis. var. *prostrata* (reelly native)

Tham el Gira 7th Sept. 1908.

Populus alba

Salix pedunculata (aurita)

S. alba.

Epilobium parviflorum.

Rubia peregrina

Crescens.

Panicum repens.

Pulicaria dysenterica.

Digitaria sanguinalis

Fiddien 14th Sept 1908.

Juncus conglomeratus

Cyperus.

Chara

Veronica Beccabunga

Epilobium parviflorum

Tencrium ~~*Chamaedrys*~~ ^{*Scordium*} in flower (rare)

Brythaea ~~*Centau*~~ *spicata*

&

ramosissima

Bahria. 14th Sept 1908

Juncus conglomeratus & *J. acutus*.

Cyperus,

Lepturus.

Polygonum lapathifolium

Tencrium ~~*Chamaedrys*~~ ^{*Scordium*} (common).

Inula crithmoides

Samolus Valerandi & *Adiantum*

Plantago major, *Pl. coronopus*

Alisma Plantago.

Veronica Beccabunga (common).

Brythaea spicata (common).

Grecina 28 settembre 1908.

Juncus conglomeratus, very common

Fagonia cretica

Salvola kali (Tragus).

Euphorbia peplis.

Eryngium maritimum.

} sulla sabbia
della spiaggia

Junla viscosa & *crithmoides*.

Hyp. perforatum

Salini. 2nd Nov. 1908.

Equisetum ramosissimum.

Boschetto 11th Nov. 1908.

Crocus longiflorus in Verdala Ids and on
the rocks (tal Bosk.).

Dyplotaxis viminea, common in Verdala
Ids and Boschetto.

Brassica campestris

B. *sinapistrum* (*Sinapis incana*).

Bellis sylvestris.

Allium chamemoly, in fire.

Gozo. 21 gennajo 1909.

Nadur. Valle di Bengemma.

Melitella pusilla

Juncus species?

Marsalforno (Vallata)

Melitella.

Allium chamaemoly. (in flore!)

Bellis annua et sylvestris.

Wied Saida. 2 Febbrajo 1909.

Coprinus picaceus.

Reichardia ⁱⁿ (Picidium vulgare).

Orchis tridentata.

Hyoseris radiata.

Wied Tricita 26 febrajo 1909.

Saxifraga tridactylites

Bellis annua et sylvestris

Trigonolobus purpureus

Lotus edulis

Orchis tridentata

Silene bifida.

Riccia etc

Boschetto (Bosk) 1 March 1909.

Romulea Columnae modesta (type)

do do *ramiflora*, and its
dark violet variety.

Sedum caespitosum

- *coeruleum*

Scilla species?

Wied Nusta. ^{id} 3 March 1909.

Callitris quadrivalvis. (1 old tree near
the iron-bridge, and two other old trees
on the precipice at Wied Filep. stumps
measuring 12-15 inches diameter).

Muscari racemosum neglectum (common)

Scilla peruviana

Hysseris scabra (type).

Chara sp. *Ranunculus aquatilis*, *Lamium*
palustre, *Blattaria macropoda*, *Callitriche*
lacustris bifida. in ponds.

Romulea Columnae ^{*ramiflora*}, *Anemone coronaria*,

Rapistrum vulgare, *Sedum coeruleum*, *S. caespit.*

Crassula rubens, *Ranunculus oleoides*.

Euphorbia melitensis (very common).

12th March 1909.

Shan Ribana. Anemone, Coronaria. etc

Pristra: *Gynura horrida* very common, not in flower.

Alyssum maritimum, *Silene bifida*. *Ophrys*
bombylifera, *O. fusca*, *Ochis lactea*, *Ranuncula*
ramiflora. *Ruta chalepensis bracteosa*,

Crescimus, *Chara* sp. *Juncus conglomeratus*,

Ranunculus Bandoti, *R. Ficaria*, *Anchusa* sp.

Hyoseris scabra. *Veronica Beccabunga*.

San Paolo tat-Targia.

Damasorium stellatum, *Callitriche stegnetis*,

Ranunculus Bandoti, *Ranuncula Columnae*.

Ruta chalepensis bracteosa, *Trax pignus*.

Ghain-el-Ghira. 12. April 1909.

Spartium junceum, on rocks in front of *Figuier's*
Palace.

Populus alba and *Salix alba*.

Sparganium ramosum.

Ranunculus trichophyllus, *aquatilis*, *Baudoti*,
flabellatus.

Smilax mauritanica

Carex divisa & *muricata* v. common.

Linaria chalcipensis.

Gladiolus communis byzantinus

Verdale Gds. 12 April 1909.

Ophrys aranifera, & var. *lunulata*, *bijucata*,
and *asignata* (common).

" *bombylifera* . common.

Ochis fragrans do

Lathyrus sphaericus

" *gorgonius?*

" *Ochris* v. c.

" *Clymenum* v. c.

Melleha and neighbourhood.

Excursions in July 1907.

Guien Ingran. 23-7-9

Silene inflata

Samolus Valerandi.

Allium paniculatum

Cerastium.

Carlina scula

C. lanata.

C. ^{quadrifera et var Fontanensis} Dactylon

Thymus capitatus.

Scorpiurus subvillosa

Erigeron crispus

Brassica campestris

Crotophaga tructoria.

Linaria graeca

Helminthia cilioides.

Plantago major

Solanum nigrum

Guien Suqrau (continua.)

Agrostis interrupta

Heliotropium europaeum

Gastroidium lepidigerum

Lonicera implexa

Andropogon distachyon

Erythraea ramosissima

8. *Centaurium* { in flower

Asparagus acutifolius

Sorghum halepense!

Melleha Rocks behind Church. 24-7-9

Helianthemum thymifolium

Erythraea Centaurium (in fl.)

Azuga Iva

Verbascum sinuatum

Glaucium luteum

Ruta chalepensis

Sedum nicaense

Orsima camphorata

Anthyllis hermammiae (not in fl.)

Melleha (Ghadira) 24-7-9.

Ambrosia maritima, very common!

Gynodon Dactylon.

Euphorbia Peplis.

E. Cispam.

Eckium parviflorum.

Lotus creticus.

Scolymus hispanicus

S. grandiflorum.

Chenopodium Vulvaria

Melleha. Idum ix - Aug. 25-7-9.

Statice minuta.

Smula cithmoides.

Smula viscosa

Crith. Crithmum maritimum.

Scirpus maritimus.

Frankenia pulverulenta

Melleha. Guien Ferret. 26-7-9.

Panicum colonum. } Common

Rubia peregrina. } In fruit
var. lucida. !

Clematis curchosa

Melleha - Guien Ferret (continua)

Plantago major

Brachypodium sylvaticum
B.

Allium paniculatum

Linaria spuria.

Lonicera implexa

Smilax aspera angustifolia.

Samolus Valerandi.

Ficaria verna

T. *oleoides.*

T. *flavum.*

Anchusa italica.

Convolvulus altheoides elegantissimus

Satureja microphylla. (Micromeria microphylla)

Potentilla hirta.

Anagallis arvensis phoenicea.

Gastroidium leudigerum.

28th March 1910.

Wied Hasrum: (near Ta Baldu).

Quercus Ilex!

Populus alba,

Cynoglossum pictum,

Crataegus.

Lonicera implexa

Scolymus hispanica

Ta Baldu:

Populus alba

Salix alba.

Lythrum vulgare.

Olea oleaster.

Cynoglossum pictum.

24th April 1910. Telleha, close to bay.
Linum decumbens!

L. gallicum

Scandix Pecten Teneis var *macrochrysa*

Catananche lutea

Sedum heptapetalum

Aegyplos ovata

Brachypodium ramosum

Brachypodium siculum

Ophrys lutea

Ochis fragrans and *O. pyramidalis*.

Psoralea bituminosa

Medicago tuberculata

Ornithogalum narbonense

O. arabicum

Torilis nodosa

Cistus crispus

Coryza saxatilis

Cirsium syciacus

Lotus ornithopodioides

L.

Medicago minima longispina

Oromis reclinata

25 April 1910. Boscchetto

Medicago intertexta

Trifolium elegans

Trifolium orbiculare

Trifolium tuberculata

Trifolium denticulata

Orchis fragrans

Ophrys lutea

Ononis reclinata (mitis).

O. Sieberi

Medicago lupulina

orobanche (violet) or *Psolarea bituminosa*.

Melilotus.

Pisum elatius.

Lathyrus sphaericus

L. inconspicuus.

1st June 1911. Conino Island.

Thymus capitatus

Carlina sicula

Asphodelus ramosus microcarpus

Asteriscus maritimus (very common).

Allium parviflorum (common).

Linum strictum

Teucrium oleoides

Phagnalon saxatile

Cuscuta Epithymum

10. *Euphorbia verrucosa*

Erodium cicutarium

Euphorbia cyparissias

Anagallis coerulea & var. *phoenicea*

Senecio Cineraria (*C. maritima*).

Rumex bucephalophorus

Inula viscosa

Ferula communis

Cynara horrida (very common.)

Euphorbia

Comino (cont.)

20. *Allium subhirsutum* (in fruit)

Picridium urecolatum

Juncus glaucus.

Chlora perfoliata

Micromeria microphylla

Erythraea ramosissima et var *tenuiflora*

Phalaris minor.

Ononis reclinata

Galactites tomentosa

Anthyllis Hermanniae

30 - *Ononis ramosissima*

Hedypnois polymorpha.

Ruta bracteosa

Echium maritimum

Urginea Scilla

Erythraea Centaureium (very common)

Carlina gumnifera

Anacamptis pyramidalis

Trisago apula (common).

Linum gallicum

Comino (cont.)

- 40 *Psoralea bituminosa*
Ajuga Reva.
Verbascum sinuatum
Convolvulus altheoides (typicus).
Mentha Pulegium
Frankenia pulverulenta
Parietaria diffusa
Echium plantagineum
Ophrys bombylifera (in fruit).
Plantago Psyllium
- 50 *Scorpiurus scorpioides*
Hedysarum coronarium
Muscari comosum
Centaurea melitensis (fairly common)
Foeniculum piperitum
Hyoscyamus albus.
Ailanthus glandulosa.
Ficus Carica
Ceratonia Siliqua
Brassica campestris
- 60 *Sinapis arvensis*

Coriis (Cont)

Urtica dioica

Alsine tenuifolia

Bromus.

Phragmites communis

Vitex agnus castus

Tamarix africana

Plantago Coronopus

Polycarpon tetraphyllum

Malva.

70 *Heliotropium europaeum*

Borago officinalis

Evax pygmaea

Reseda lutea.

Beta maritima

Sysimbrium polyceratum

Mesembryanthemum nodiflorum

Hypericum aegyptiacum

Hypericum crispum

Cichorium spinosum

80. *Anchusa italica.*

Comino (cont).

Corvolvulus pentapetaloides

Phagnalon luridum

Asperula longiflora

Plantago Lagopus

Adiantum Capillus Veneris

Sherardia arvensis

Stipa tortilis

Lagurus ovatus

Filago germanica

90 *Anmmi Visnaga*

Sonchus asper

Sonchus oleraceus

Capparis rupestris

Mercurialis annua

Scolymus hispanicus

Alyssum maritimum

Echium arenarium

Chrysanthemum segetum

Hordeum ^{marit.} Leporium

100 *Anthemis crasmaritima*

Cornino (cont.)

Hyoseris radiata

Statice minuta (cancellata) reticulata)

Chenopodium viride

Silene sedoides

Sedum coeruleum

Trulla crithmoides

Orithogalum marbonense (in fruit).

Stachys hirta

Nigella arvensis.

110. *Anthyllis vulneraria*

Silene inflata.

Valeriana Cornucopiae

Trifolium stellatum

Tordylium Apulum (in fruit).

Euphorbia. small leaves

Campanula trinus

Orchis tridentata (in fruit).

Asteriscus spinosus.

Scabiosa grandiflora

120. *Salvia clandestina*

Comino (cont).

Ononis biflora

Brachypodium

Ronulea ramiflora (in fruit)

Agave americana.

Convolvulus lineatus

Sanguisorba offic.

127. *Ononis ornithopodioides* (fairly common)
on hill between C. St. Maria & C. S. Niclan

Andropogon distachyon.

Lotus edulis

130 *Lotus ornithopodioides*.

20th March 1913. Uied Babu.

Orchis pyramidalis - alba

" " " rosea

" " " fragrans

Sesapias parviflora

Cerintho aspera major

Lonicera impleya

Herniaria hirsuta

Polygala monspeliaca

Euphorbia verrucosa

Greina.

25th January 1913.

Typha latifolia } not in flower
Typha angustifolia. }
Lygeum spartum
Fagonia cretica in flower & fruit
very abundant.

Alisina plantago in flower
Convolvulus cantabrica?

Convolvulus altheoides f. *glabra* (verde oscura)
Vicia sp.

Oxalis cernea fl. pl. (~~not seen~~ ^{very common})

Boschetto (Fakkania). 6th Feb 1913.

Orchis saccata. 2. fine specimens.

O. lactea. very common

O. lactea var. alba pure white variety, 1 specimen.

Sedum glanduliferum.

Wardia

9th Febr 1913.

Nothing special.

Echium.

Ghain l'Isas.

Populus alba.

Rubia peregrina

Cyperus longus

Carex sp.

? Malope malachoides.

San Martin

Pyrus communis in flower, common.

Populus alba.

Echium italicum, v. common. not in flower.

Wied Encita. 7th March 1913.

Pichis saccata ~~in~~ pods, flowers over.

Ophrys bombyliflora

O. aranifera

O. lunulata.

Callitriche palustris var. bifida

Ranunculus aquatilis

Fornum ir-Rieh. 10th March 1913.

Crepis bulbosa

Echium etc. in flower

Convolvulus oleifolius.

Lamium amplexicaule.

Salvia verbenaca.

Cichorium spinosum, *Hyoseris radiata*, *Rumex brucei*.

Rumex divaricatus, *R. conglomeratus*.

Crucianella maritima, *Euphorbia exigua*.

Euph. helioscopia, *E. chaenocyprissias*.

Anagallis arvensis coerulea, *Asphodelus ramosus*.

Lygum spartum; *Juncus effusus conglomeratus*.

Flora poor, not a single Orchid.

There is a thick layer of conglomerate immediately underlying the upper coralline limestone, on the side towards Greina, which layer goes on till near the summit of Adam Pellegra - where beneath the U.C.L. there is a considerable layer of globigerina, and under it a layer of marl etc.

20th March 1913. Lied Babu

Orchis pyramidalis alba

.. .. rosea

.. .. *fragrans*

Scrapias parviflora

Cerithe aspera Major

Lonicera implexa

Herniaria hirsuta

Polygala monspeliaca

Euphorbia verrucosa

Orobanche alba

Kopsia ramosa

Muscari comosum

Crataegus laciniata

Coronilla glauca

Grammites leptophylla

Gladiolus byzantinus

Anagallis arvensis, et *B* *coerulea*

Aphodelus ramosus

Rumex bucephalophorus

Iris sisirinchium
Urtica pilulifera (balearica)
Allium subhirsutum
Hypericum aegyptiacum

Misrah Ghonok e Vallata Musta
24-3-13

Poa bulbosa

Geranium molle

Polygala monspeliaca

Carlina sphaerocephala (sicula) con galle
sulle foglie

Digella damascena

Euphorbia dendroides

Vicia tetrasperma var.

Campanula trachelium

Serapias occultata (in fiore)

Ophrys fusca (in fiore)

Grammitis leptophylla

Lanarkia aurea

Euphorbia peploides

Il Ballut, tra Hardia e Puales, 29-3-13.

Rosa gallica var pumila, in fiore

Lavatera arborea "

L. trimestris "

Populus alba.

Geranium dissectum (fiore).

G. Cynoglossum pictum "

Anchusa italica "

Epilobium virgatum (non fl.)

Ranunculus Philonotis

Sp. Smilax aspera.

" - mauritanica, et angustifolia

Asper: acutifolius

Lonicera implexa

Prasium majus

Geranium Robertianum

Quercus Ilex. grossissimi alberi.

Rubia peregrina con galle florali

Cronilla glauca valentina

Melica ciliata

Orchis fragrans,

Allium roseum.

Olea oleaster

Muscari comosum.

Lithospermum arvense
Allium subhirsutum.
Lathyrus aphaca
Melilotus sp.
" " sp.

Cladonia pyxidata
Ochis pallida?

Medicago orb. spiralis

Serapias occultata

Allium nigrum

Ophrys fusca

Puzosium protractum.

Asphodelus fistulosus!

Linaria chalepensis!

Vicia cuneata albiflora.

Ghain il Ghra 16-4-13.

~~Salix~~ *Salix pedicellata*, *S. alba* o *fragilis*, *Ulmus campestris*.

Populus alba. *Medicago* ^{maritima, var.} *olivaeformis*, *M. tuberculata*.

Lathyrus annuus aurantiacus!! (nuova specie per

Malta) *Spartium pinceum*. *Sparganium angustifolium*.

Allium roseum bulbiferum, *Arundo Pliniana* ecc.

Uied Bufala 19-4-13

Lythrum Graefferi molto abbondante.
Oenanthe globosa.

Scorzonera laciniata decumbens.

Juncus conglomeratus, *Cyperus longus*, ecc.

Medicago intertexta.

M. denticulata (*tuberculata*)

Festuca elatior, lungo rigagnolo.

Polygonum maritimum.

Scorpiurus subvillosa. f. *brevis*.

Briza maxima.

Bahia 15-3-16.

- Populus alba.*
Colocasia antiquorum.
Veronica anagallis, in fire.
Polygonum tenuiflorum in fire.
Cyperus longus.
Epilobium virgatum
Plantago major in fire.
Reseda alba "
Beta maritima "
Sinapis alba "
Juncus conglomeratus
J. biformis.
Pisum elatius in fire
Lotus purpureus (Tetragonolobus) in fire.
L. edulis. "
L. creticus. "
Vicia cuneata "
Hippocrepis unisiliquosa. "
Rasturtium officinale "
Sherardia arvensis. "
Salvia verbenaca. "
Fedia cornucopiae. "
Cynoglossum pictum. "
Hypocyanus albus (typicus) "

Bahria 15-3-16.

Silene bipartita in flore.

S. vespertina "

S. vulgaris (inflata) "

Ophrys fusca "

Bulliardia Vaillantii "

Alyssum maritimum "

Behium arenarium "

Borago officinalis "

Asphodelus ramosus microcarpus "

Convolvulus althaeoides et var. *italicus*. "

Calendula arvensis et ^{*fulgida*} ~~*stellata*~~ _(*marginata*). "

Asteriscus spinosus "

Sysimbrium officinale. "

Biscutella apula. "

Frankeia fulvoerulenta "

Gymnolus valerandi "

Laurus nobilis. "

Salix pedicellata. "

Petroselinum vulgare (*apium petroselinum*)
nat.

Lygeum spartum

Statice minima

Anchusa italica

Cynara horrida

Gium stoloniferum

Adiantum Capillus Veneris.

Scabiosa grandiflora (*lilacina*) in flore.

Comino. 13 aprile 1916.

? *Ammi Visnaga* (vicino molo,
Cala Sta Maria)

Medicago truncata

M. marina longiseta

Hedysarum polymorpha, var *tubaeformis*

Convolvulus italicus (typicus)

Gran Castello, 14 aprile 1916.

Astragalus sesameus (abbondante)

Linaria pseudo-laxiflora (abbondante)

Trigonella monspeliaca (abbondante)

Matthiola incana

Mesembryanthemum acinaciforme

Brassica fruticulosa

Diplopaxis viminea

Albine procumbens (geniculata)

Herniaria ^{cinnerea} hirsuta

Uardica. 22 aprile 1917.

Geropogon glaber

var *hirsutus!* (nuovo.) } Comuni,
in fiore
e frutto

Scorzonera

Valerianella

Ranunculus arvensis

Medicago intertexta

fr. *ciliaris*

Ornithogalum narbonense

Allium sphaerocephalum.

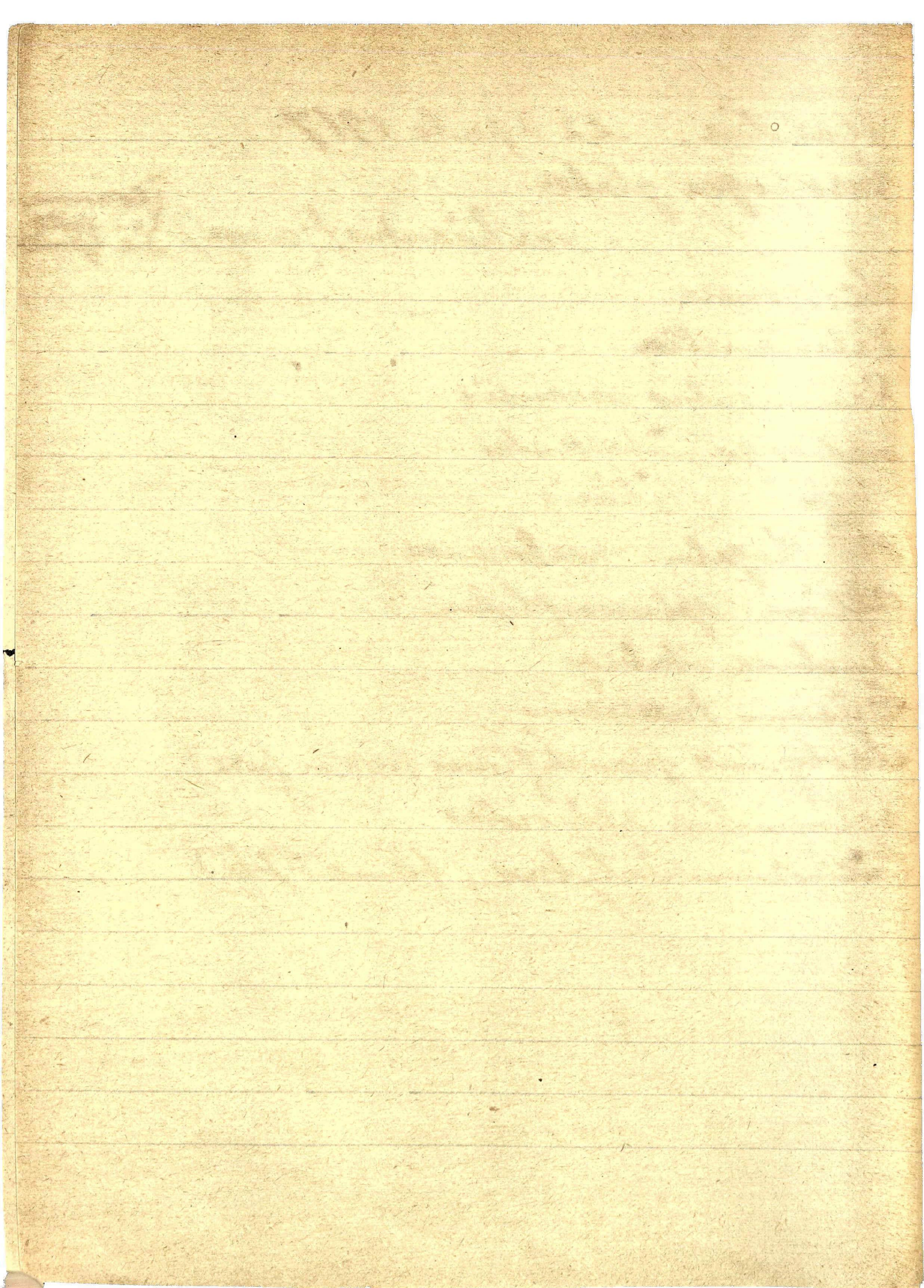
Anchusa italica

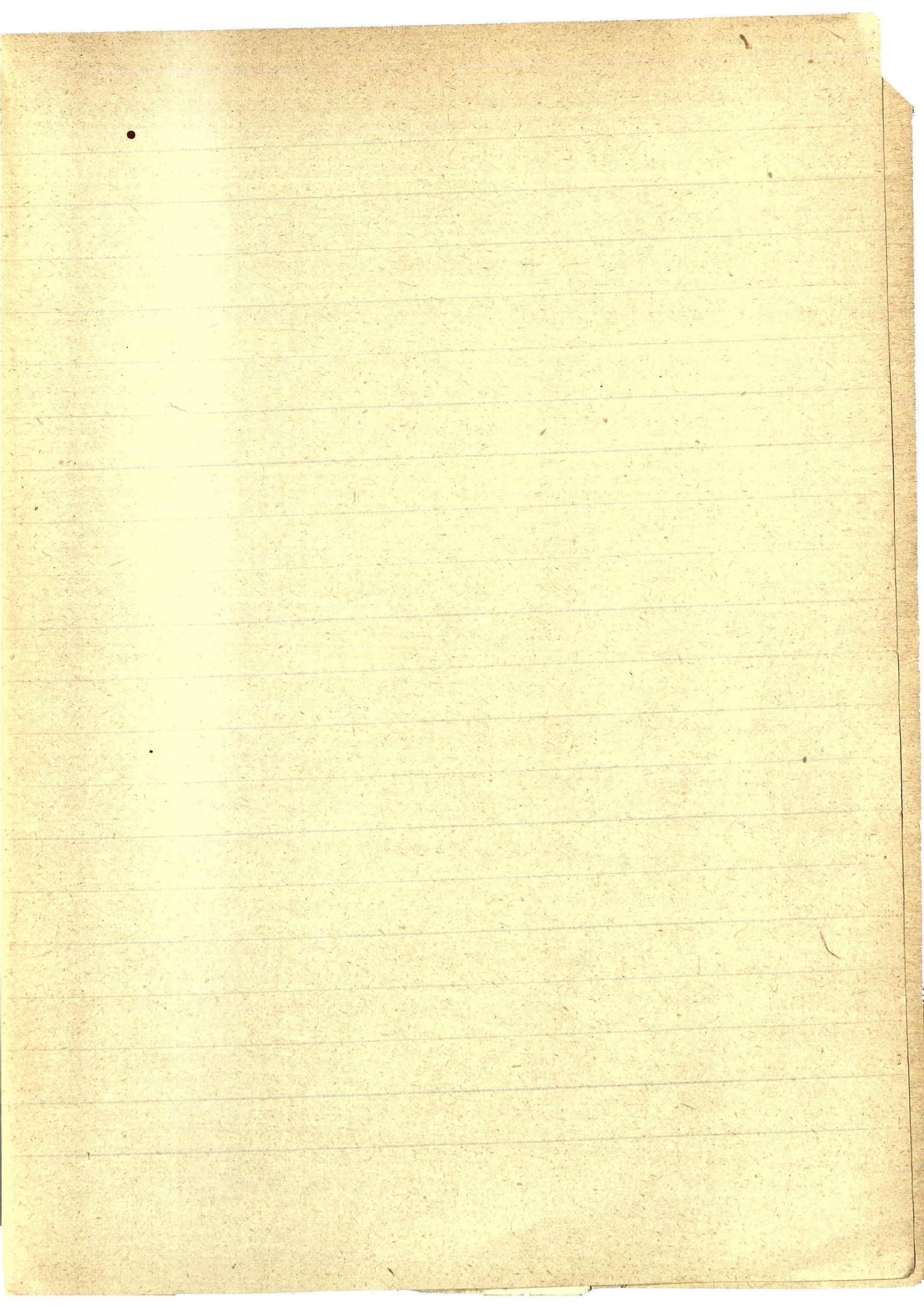
Cirsium pauricum

Scolymus grandiflorus (non in fiore).

Helminthia echioides

Cichorium Intybris (forma tipica.)





Sphragis fusca

Prunella prostrata

Asphodelus fistulosus

Linaria chalcipensis

Vicia cuneata albiflora

Quercus imbricaria

nam lista

Rosa

Savatera arborea

L. trimestris

Populus alba

Seranium dissectum

Cynogloss pichum

Abchusa italica

Epilobium virgatum (n. f.)

Ranunculus Philonotis

Smilax asp.

Quercus Ilex

Smilax mauritanica

Asparagus acutifolius

Sonchus oleraceus

Prasium majus

Sera Robertianum

Rubia peregrina ^{in fine} ^{con galle floral.}

Coronilla glauca valentina

Melica ciliata

Orchis fragrans

Allium roseum

Ilex oleaster

Muscari comosum

Lithospermum arvense

Allium subhisutatum

Lathyrus aphaca

Coronilla scirpoides

Melilotus sp. malabar

Bladonia pyxidata

Smilax asp. var angustifolia

Orchis pallida?

Medicago arb. spiralis

Serapis viculata

Allium nigrum

Corn. altheoides, tubicum (com.)
Corn. pentapetaloides (com.)

Allium roseum

Valeriana corniculata

Femula communis

Lotus edulis

L. conjug.

Termin. pubescens

Trifolium agrarium

T. scabrum

Vaillantia muralis

Lagurus ovatus

Cichorium spinosum

Vicia cuneata

Vulpia

Capparis

Trifolium umbellat.

Verbas. ornatum

Vicia tetrasp.

Silene inflata

Fumaria sp.

Trif. stellatum

Silene nocturna

Rumex crispus

Hordeum leporinum

Arth. secundarium

Lepturus incurvatus

Panicum
Asphodelus
Tmesari
Ophrys fusca
Cichus fragans communissima
Petra
Theridiz
Anagallis
Brondus madriensis
Nigella
Asraf. bacticus
Gobanche multidi
Scrapies occultata
Anthyllis tetraph (com)
" vuln. E
" hem
Ononis Onit
" Tintis
Camp. rivinus
Sim. Gallicum
Tricaps. apula commun
Oph. bombyliflora
Hedys. spinosissimus
Narcissus tazetta
Hypochaeris 1 e mult

Seville-Rang
Carob-seeds