


Disappearing Destinations - the consequences of climate change: contemporary debates for adapting to change at tourism destinations.

**Dr Andrew Jones
University of Wales**

**CTS IV Conference
UWIC
Cardiff 2-5 July 2011**

A tropical beach scene with palm trees and a blue sky. The text is overlaid on the image.

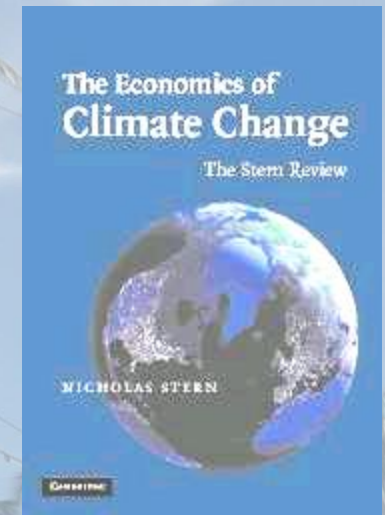
The research context
Current debates
Current actions
Where we are today
The Future

The Context

leading climatologist, David Viner, advocates that climate change will have a profound impact on tourism in the coming decades (Viner,2006).



HM TREASURY



STERN REVIEW: The Economics of Climate Change UK

‘There is still time to avoid the worst impacts of climate change, if we take strong action now’.



‘There is now clear scientific evidence that emissions from economic activity, particularly the burning of fossil fuels for energy, are causing changes to the Earth’s climate’

Guardian
Unlimited

The Research Context

A tropical beach scene with a sandy shore, turquoise water, and a dense line of palm trees under a blue sky with light clouds. The text 'The Research Context' is overlaid in the center.

Paradoxical issues

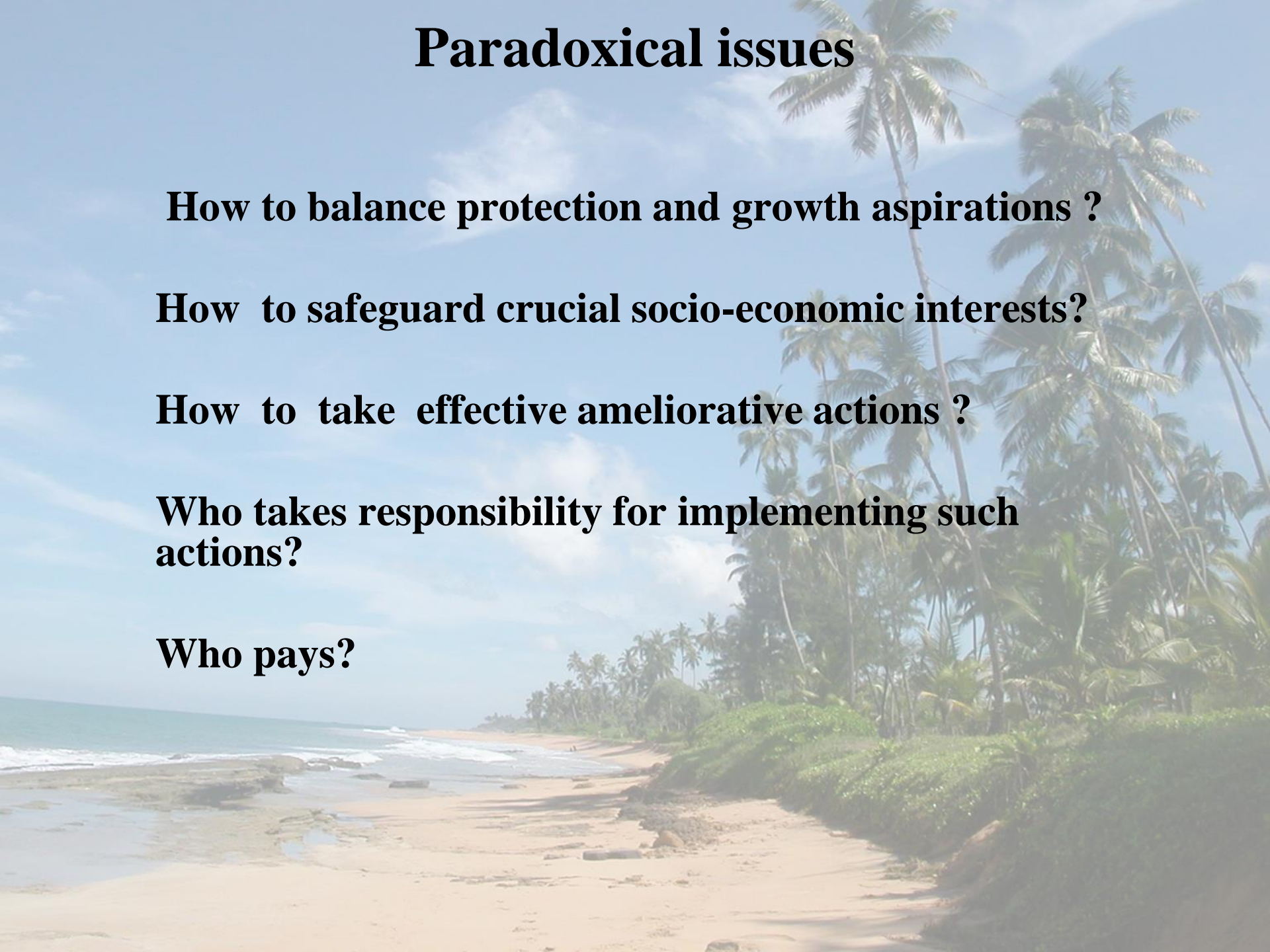
How to balance protection and growth aspirations ?

How to safeguard crucial socio-economic interests?

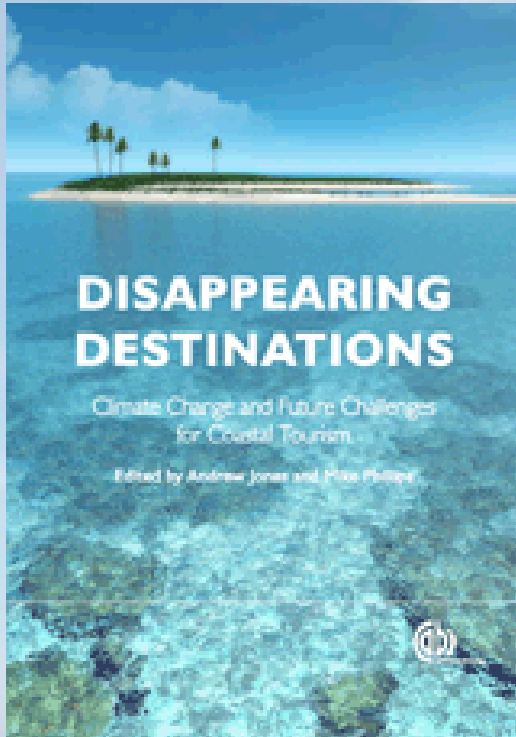
How to take effective ameliorative actions ?

Who takes responsibility for implementing such actions?

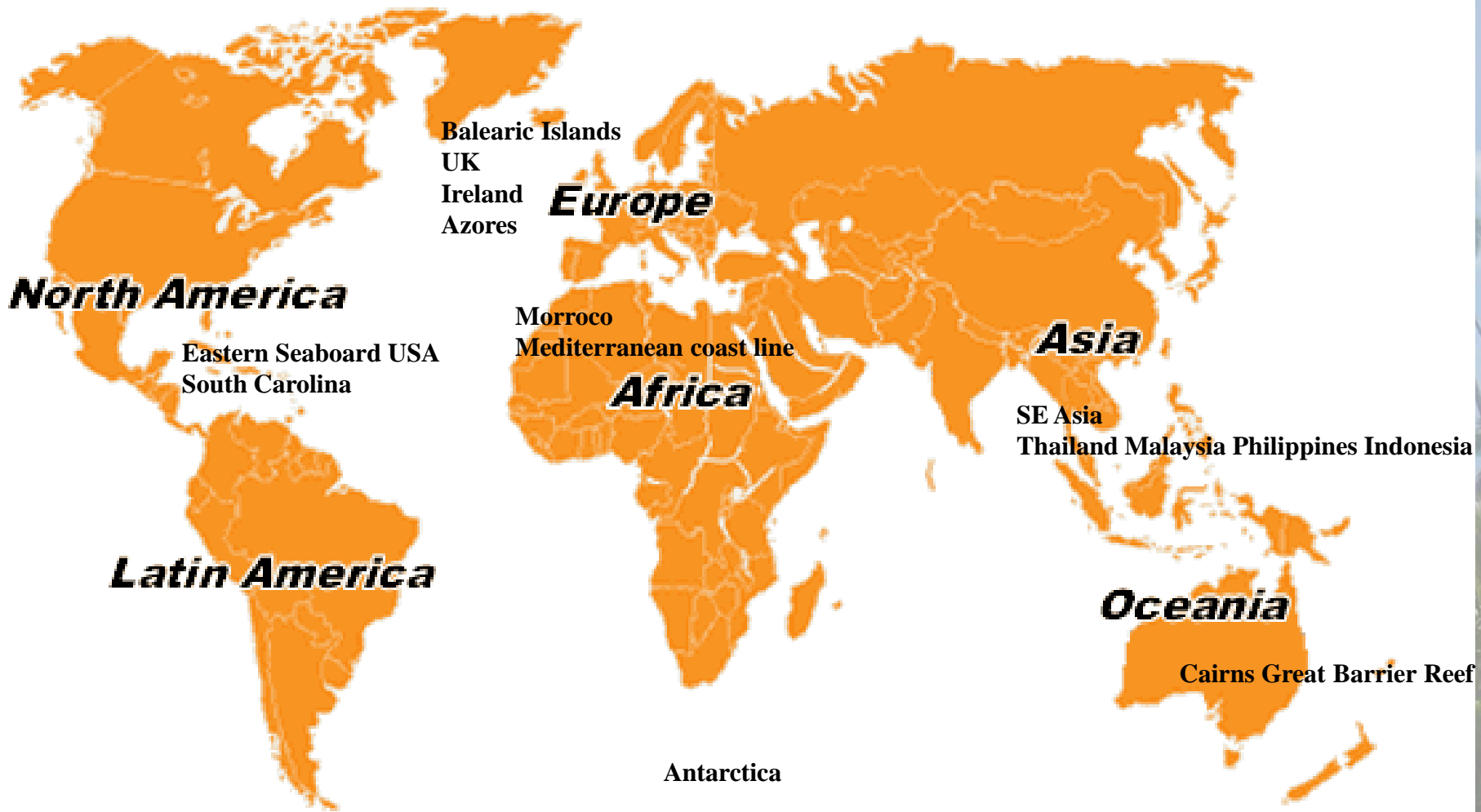
Who pays?



2011



Edited by A L Jones,
University of Wales, Cardiff,
M Phillips, Swansea
Metropolitan University,
Wales



Current debates

A tropical beach scene with palm trees and the ocean. The image shows a sandy beach in the foreground, leading to a line of tall palm trees. The ocean is visible in the background under a blue sky with some clouds. The text "Current debates" is overlaid in the center of the image.

The Future Of Travel: The 'Disappearing Destinations' Of 2020



'Mass tourism and climate change could lead to destruction of world's wonders'

Churchill Insurance Group Report

22 September 2006

The Future Of Travel: The 'Disappearing Destinations' Of 2020

22 September 2006

Country	Place	Effect by 2020
Spain	Puerto de Mazarron (South-Eastern Spain)	MALARIA - MOSQUITOS
USA	Everglades, Florida	HURRICANE DANGER.
Greece	Athens Crete	HIGH TEMPERATURES - WATER SUPPLIES
Italy	Amalfi Coast and Tuscany	HEAT WAVES RISK OF FIRE
India	Goa	BEACH EROSION POWERFUL CYCLONES
Maldives	Taj Coral Reef	COASTAL CORAL REEF EROSION

Copyrighted Material



• 2007

Tourism and Climate Change Risks and Opportunities

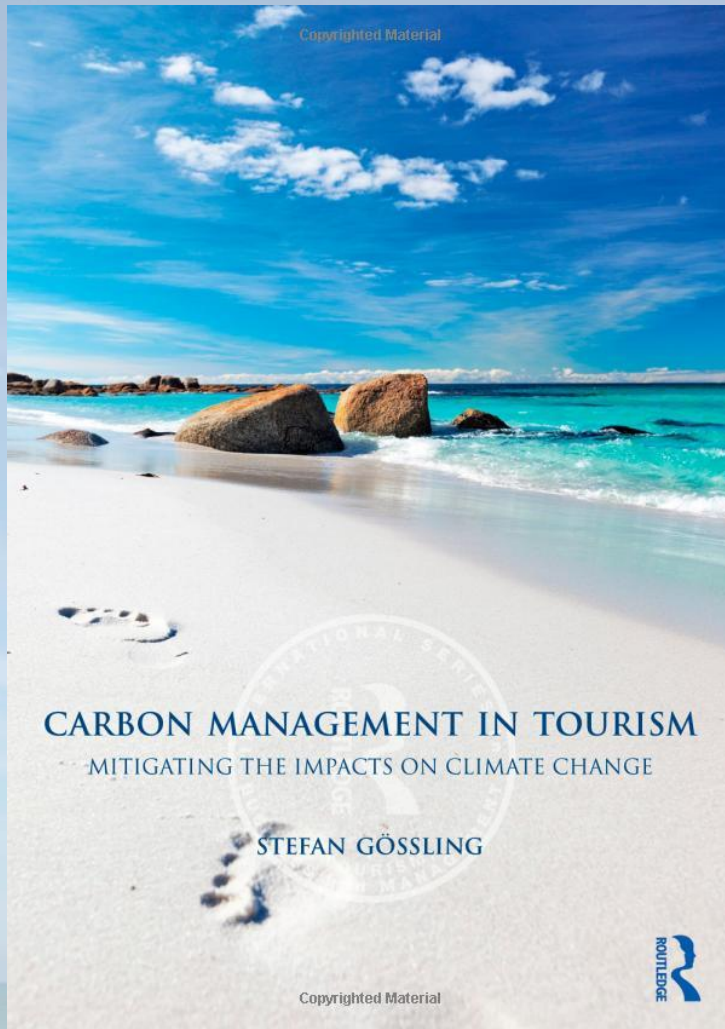


Susanne Becken and John E. Hay

Copyrighted Material



2008



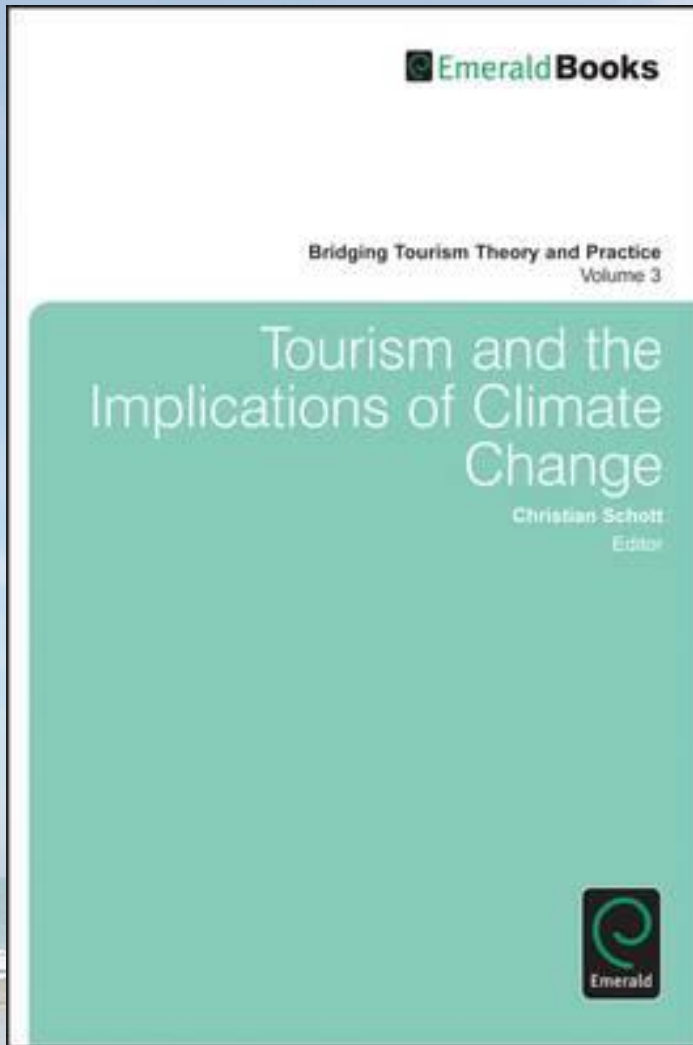


Climate change to re-shape tourism

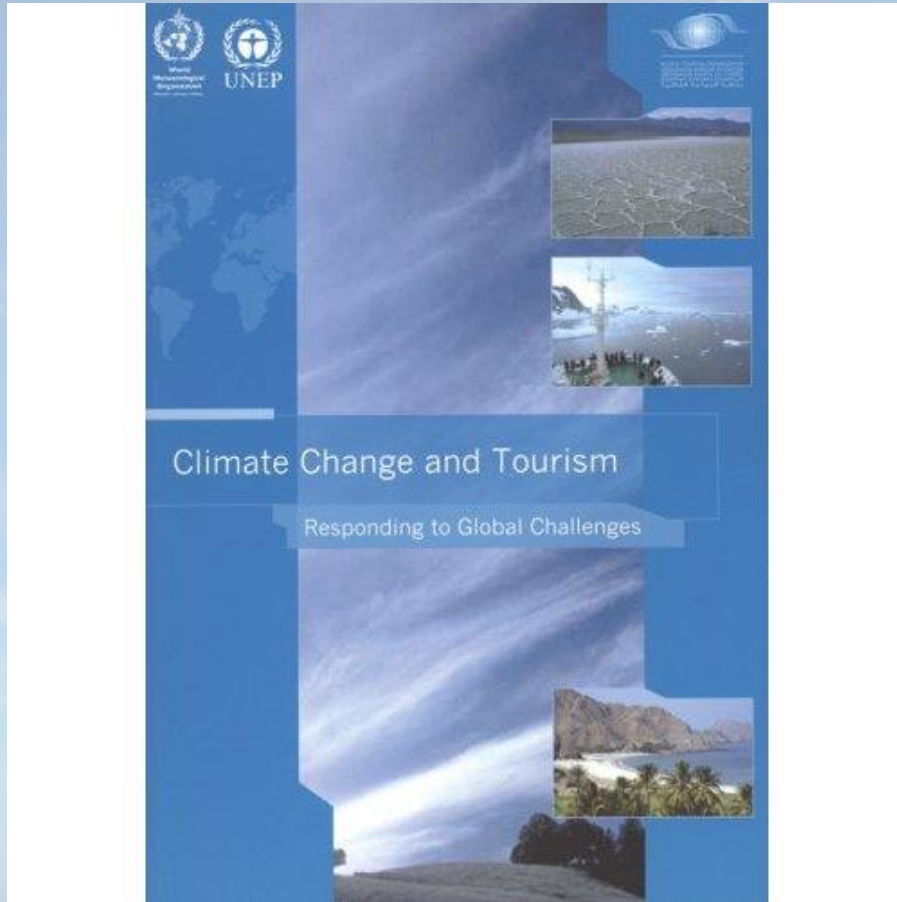
Report warns industry will face dramatic changes over the coming decade as climate change and shifting demographics increase pressure on many resorts.

BusinessGreen.com October 2009

2010



2010



PICTURING GLOBAL WARMING: Greenpeace's Photoclima

[Abigail Doan](#) November 29, 2007



PICTURING GLOBAL WARMING: Greenpeace's Photoclima



Greenpeace . La Manga del Mar Menor. Murcia

PICTURING GLOBAL WARMING: Greenpeace's Photoclima

[Abigail Doan](#) November 29, 2007



Greenpeace . Río Ebro a su paso por Zaragoza

Erosion and rising seas threaten Wales's most beautiful beaches

- Historic sites at risk from storms and tidal surges
- National Trust report calls for action to tackle crisis

David Noton -National Trust February 2007



Beaches on the Gower peninsula are the habitat of a plethora of plants and animals that could be lost

Headline News

A tropical beach scene with palm trees and a blue sky. The background is a soft-focus image of a sandy beach with several tall palm trees and a clear blue sky with light clouds. The water is visible on the left side of the frame.

24 Feb 2010

We need to cool down climate row

Lurid insults and threats from the extremes on both sides of the climate debate wing around the blogosphere - but there must be a way forward

10 Oct 2010

The climate change scare is dying, but do our MPs notice?

The collapse of the warmist position on climate change has not impinged on politicians in Britain or Brussels

13 Nov 2010

'Climategate' scientist says data disorganised

Phil Jones, the professor behind the "Climategate" affair, has admitted some of his decades-old weather data was not well enough organised.

Very, very slow policy process



Current Actions

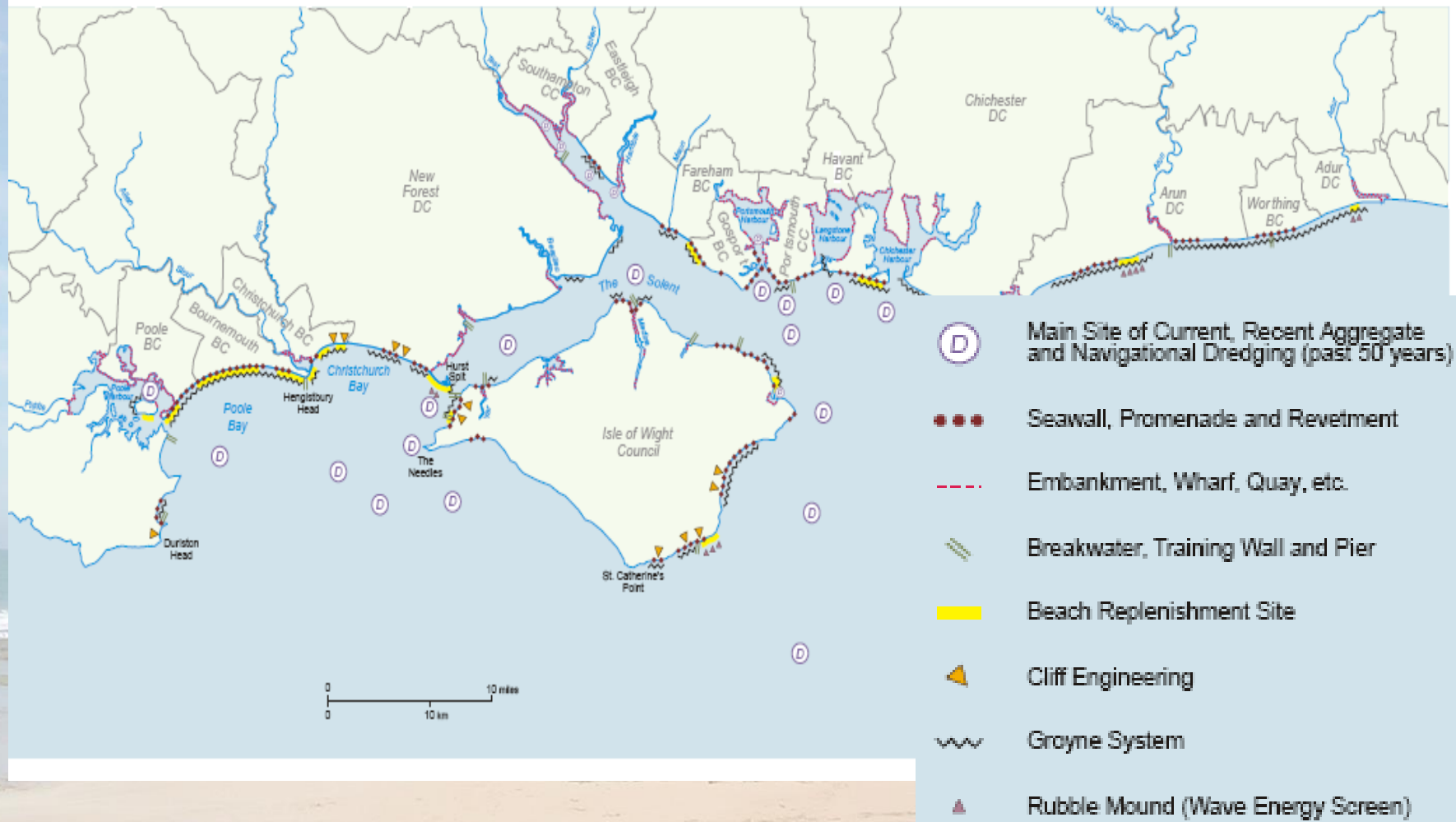
A tropical beach scene with palm trees and the ocean. The image shows a sandy beach with waves crashing against the shore. In the foreground, there is a dense line of palm trees and other tropical vegetation. The sky is blue with some light clouds. The text "Current Actions" is overlaid in the center of the image.

Managed responses



Managed responses

Coastal Defence and Protection



Managed responses



Managed responses



Forlock shingle ridge after the breach. Photograph - Heather Lowther (ENPA)



Forlock shingle ridge. Photograph - Heather Lowther (ENPA)

Managed responses Beach replenishment Lyme Regis Dorset UK





Llywodraeth Cynulliad Cymru
Welsh Assembly Government

Welsh Coastal Tourism Strategy



Draft Final Strategy Document
January 2007

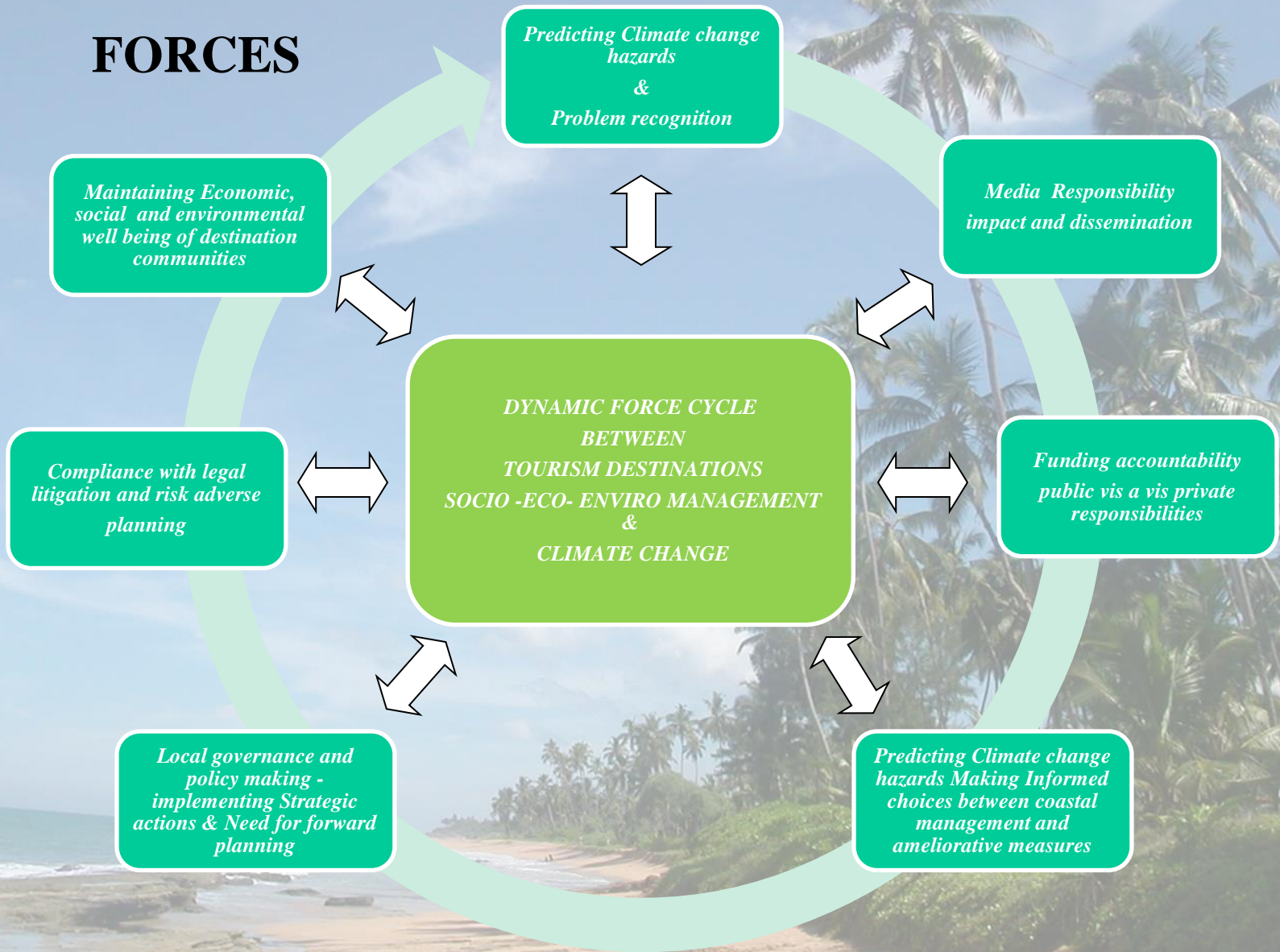
RESEARCH OUTCOMES

The critical debates?

Emerging Themes?

1. Dynamic institutional forces at play
2. Emerging embryonic management processes

FORCES



DYNAMIC FORCES

IMPACTS:

Predicting Climate change hazards

GOVERNANCE:

policy making -strategic actions - forward planning

POLICY RESPONSES:

Making Informed choices

FINANCE:

Funding public vis a vis private

DEVELOPMENT & GROWTH:

Maintaining Economic, social and environmental well being

MEDIA:

responsible reporting

HEALTH AND SAFETY:

Compliance with legal litigation and risk adverse planning

EMBRYOTIC MANAGEMENT PROCESSES

The Destination Management Continuum: Recognising problems, Meeting expectations and Delivering Solutions



Recognising Problems

recognition of climate change predictions

- Significant short comings of government on resourcing, governance and strategy
- Lack of HRM training on understanding issues
- Difficulty in thinking long term adaptive strategies
- Lack of strong legislative powers
- Sceptical public towards green labelling, carbon offsets and emission trading schemes



Meeting Expectations

- Need for planning and early implementation strategies
- Stronger regulatory powers for zoning and land use
- Stronger regulatory powers for carbon emissions
- Stronger directives from government
- Technical help on how to respond – capacity building
- Collaborative integrated relationships



Delivering Solutions

- Better integrated and coordinated government action
- Building an improved research based information agenda
- Capacity building and local empowerment
- Ensuring accurate and responsible media reporting
- Securing and coordinating public and private funding
- Defining legal responsibilities and adequate risk assessments
- Proper assessments of impact strategies

THE CONTINUUM

The Stakeholders

The Destination

Climate Change Predictions

The Tourism Community

Regulatory
Fiscal
Legal
Governance
Structures

Recognising Problems

- **RESOURCES:** Funding actions
- **GOVERNANCE:** Significant short comings on government policy and strategy
- **TRAINING:** professionalism in understanding issues
- **LONGEVITY:** Difficulty in thinking long term adaptive strategies
- **LEGAL POWERS:** Lack of strong legislative frameworks
- **COMPLACENCY:** Sceptical public towards green labelling, carbon offsets and emission trading schemes

Meeting Expectations enhancing resilience

- **EFFICACY: Need for planning and early implementation strategies**
- **ZONING / PROTECTION: Stronger regulatory powers for land use planning**
- **CARBON OFFSETTING: Stronger regulatory powers for carbon emissions**
- **CAPACITY BUILDING: Technical help on how to respond**
- **PARTNERSHIP: Collaborative integrated relationships**

Delivering Solutions

- **STRATEGIC COORDINATION:** integrated government and private actions
- **FUNDING:** Securing and coordinating public and private funding
- **RESILIENCE AND VULNERABILITY:** Proper data assessments of impact strategies
- **EMPOWERMENT :** stakeholder capacity building and local empowerment
- **RISK COMPLIANCE:** Defining legal responsibilities and adequate risk assessments

OPTIONS FOR THE FUTURE

Understanding the threats

- Remaining uncertainty
- Validity of current predictions
- Increased adverse weather occurrence
- General rise in sea level.
- Erosion issues will become more prominent

Being richer in skills

- Assessing destination vulnerability
- Assessing destination resilience
- Move toward more strategic integrated management practices
- Managed retreat
- Alternative niche and hinterland development
- Research Data



Many Thanks for Listening

Dr Andrew Jones

andrew.jones@wales.ac.uk

University of Wales Faculty

University of Wales

