

DEVELOPMENT OF A SINGLE OPTIMIZED METHOD FOR THE HPLC ANALYSIS OF ANGIOTENSIN II RECEPTOR BLOCKER (ARB) ANTAGONISTS.



Gustaf Cauchi and Claude Farrugia

Department of Chemistry, University of Malta

Objective 1 -

To optimise Assay and Related Substances HPLC methods for irbesartan, losartan and valsartan

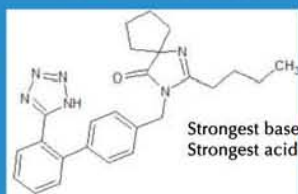
Objective 2 -

To use the strategy adopted in Objective 1 to develop an Assay Method that resolves the three APIs in a single reverse phase HPLC method

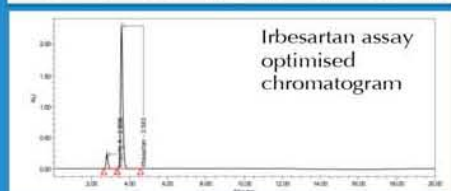
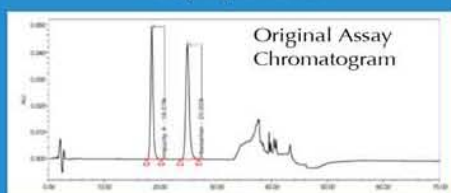
Objective 3 -

To transfer the method developed in Objective 2 from HPLC to UPLC

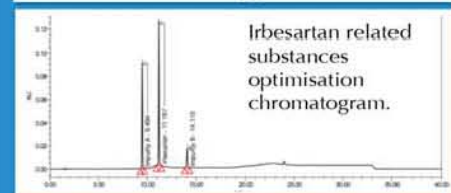
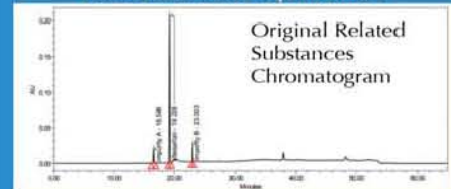
Irbesartan



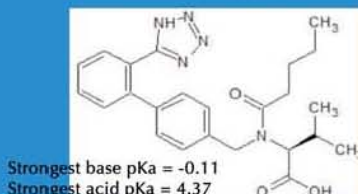
Assay Optimisation



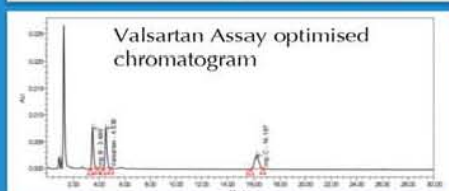
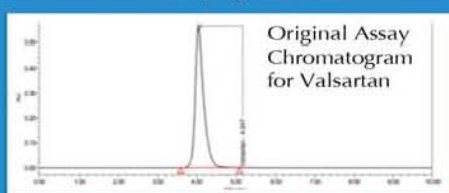
Related Substance Optimisation



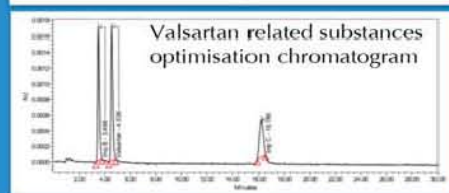
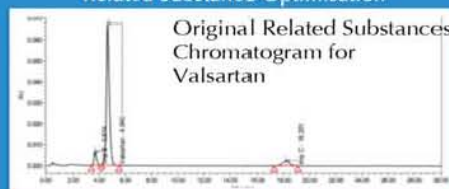
Valsartan



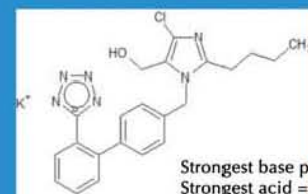
Assay Optimisation



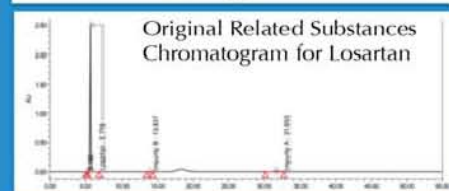
Related Substance Optimisation



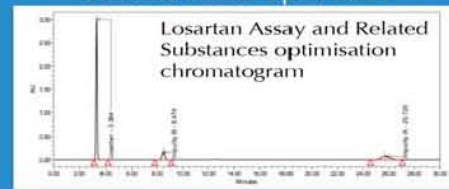
Losartan



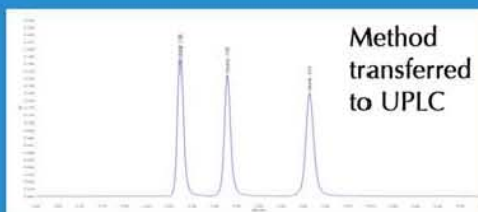
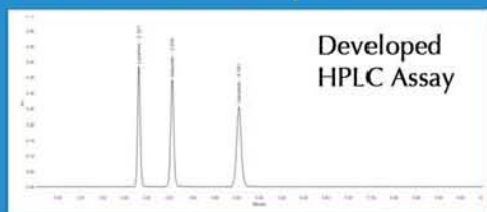
Assay and Related Substances Optimisation



Combined Method Optimisation



Method Development



Peak Name	RRT in HPLC	RRT in UPLC
Losartan	1.00	1.00
Irbesartan	1.32	1.32
Valsartan	1.96	1.90

Obtaining close RRT (Relative Retention times) between the two methods signifies that the geometrical transfer was executed successfully and that the two methods could be used interchangeably and the results compared with each other.

Peak Name	Retention Time (min)	Area	Capacity Factor	Resolution	Tailing Factor	Plate Count	Height (µV)	
Losartan	Mean	2.319	1649066.4	3.639	N/A	1.033	7072	386610.4
	NASD	0.09%	0.1%	0.12%	N/A	0.4%	0.96%	0.16%
Irbesartan	Mean	3.072	1748892	5.144	6.234	0.992	8803	344159.5
	NASD	0.1%	0.1%	0.12%	0.29%	0.21%	0.47%	0.19%
Valsartan	Mean	4.535	1908869.3	8.071	9.084	1.03	8867	253824.2
	NASD	0.13%	0.12%	0.15%	0.25%	0.08%	0.52%	0.25%

Peak Name	Retention Time (min)	Area	Capacity Factor	Resolution	Tailing Factor	Plate Count	Height (µV)	
Losartan	Mean	0.324	164755.6	2.237	N/A	1.19	3683	187827.6
	%RSD	0.19%	0.20%	0.27%	N/A	0.44	1.14	0.44
Irbesartan	Mean	0.428	174542.2	3.28	4.465	1.106	4505	165219.7
	%RSD	0.17%	0.67%	0.22%	0.30%	0.17%	0.72%	0.42%
Valsartan	Mean	0.614	189376.3	5.135	6.363	1.089	5547	139763.8
	%RSD	0.10%	0.34%	0.12%	0.63%	0.31%	0.72%	0.38%

