

HAEMOPHILIA 3:

HAEMOPHILIA AND EUROPEAN HISTORY

J. RIZZO NAUDI, B.Sc., M.D., M.R.C.P.(E).

Physician, St. Luke's Hospital, Lecturer in Medicine, Royal University of Malta.

Haemophilia must be one of the most important diseases that have affected the Royal families of Europe and the well documented pedigree for haemophilia of the family line of Queen Victoria, shown in Fig. 1, is certainly one of the most interesting for students of history and medicine.

Queen Victoria had one haemophiliac son, Leopold, Duke of Albany No. 8, II Generation, and two daughters, Alice and Beatrice, who were carriers of the sex linked gene for haemophilia. These two daughters transmitted the disease to the Royal families of Russia, Spain and Prussia.

The first of these daughters, Alice, married Prince Louis of Hesse by whom she had one haemophiliac son and two daughter carriers. One of these daughters, Alexandra No. 14, III Generation, married Nicholas II, Czar of Russia. The Czarevitch, who was affected with haemophilia, came after four daughters. The knowledge that he was affected with this bleeding disorder must have been a great shock to his mother, who fell under the influence of quacks and soothsayers, the most notorious being the monk Rasputin, who by claiming to work remarkable cures, acquired great influence at court, alienated millions of Russians from the

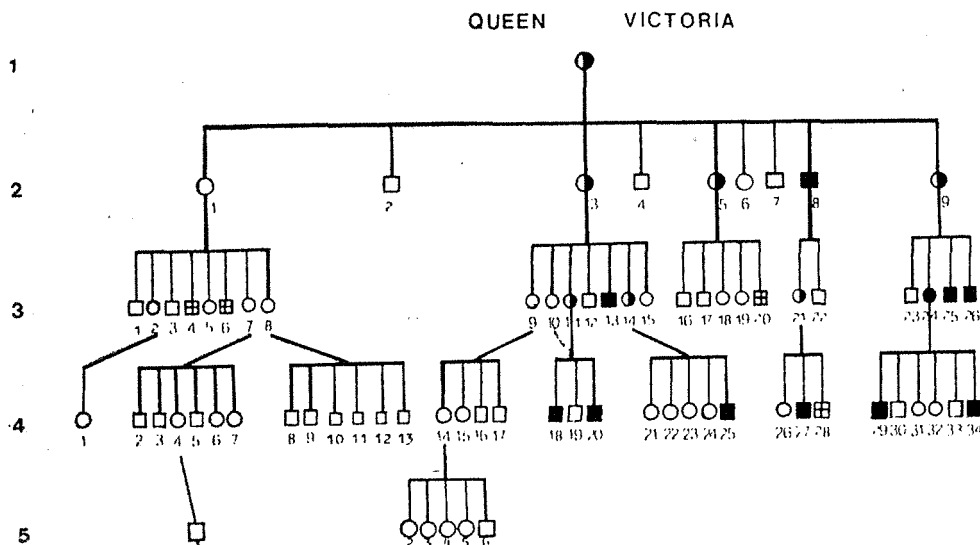
monarchy and so helped prepare the way for the revolution.

Beatrice, No. 9, II Generation, the other daughter carrier, married Prince Henry of Battenberg, by whom she had two haemophiliac sons and one daughter carrier, Victoria Eugenie, No. 24, III Generation, who married King Alfonso XIII of Spain. Two of their sons, Alfonso the heir (No. 29, IV Generation) and Gonzalo (No. 34, IV Generation), were affected with the disorder.

Although neither the dethronement of the Czar, nor of Alfonso XIII of Spain was the direct result of the fact that their heirs were haemophiliac, there can be little doubt that the knowledge that the successors to the throne were invalids, played an important part in the fall of these two monarchies.

Haemophilia was also transmitted to the Royal Family of Prussia through Irene, No. 2, III Generation, sister of the Czarina, who married her cousin, Prince Henry of Prussia.

It is interesting to note that another sister of the Czarina, Victoria, No. 9, III Generation, was the grandmother of Prince Philip, Duke of Edinburgh; luckily she was not a carrier of the gene and so did not transmit the disease to her offspring.



- I**
1. Victoria, 1819-1901, Queen of England.
- II**
1. Victoria, 1840-1901 X Frederick III, Emperor of Germany.
 2. Edward VII, 1841-1910, King of England.
 3. Alice, 1843-1878, X Prince Louis of Hesse.
 4. Alfred, 1844-1900, Duke of Edinburgh.
 5. Helena, 1846-1923, X Prince Christian of Schleswig-Holstein.
 6. Louise, 1848-1939, X Duke of Argyll.
 7. Arthur, 1850-1942, Duke of Cannaught.
 8. Leopold, 1853-1884, X Princess Helena of Waldeck.
 9. Beatrice, 1857-1944, X Prince Henry of Battenberg.
- III**
1. William II, 1859-1941, Emperor of Germany.
 2. Charlotte, 1860-1919, X Duke of Saxe-Meiningen.
 3. Henry, 1862-1929, Prince of Prussia.
 4. Sigismund, 1864-1866.
 5. Frederica, 1866-1929.
 6. Waldemar, 1869-1879.
 7. Sophie, 1870-1932, X Constantine, King of Greece.
 8. Margaret, 1872-1954, X Frederick, Duke of Hesse-Cassel.
 9. Victoria, 1863-1950, X Prince Louis of Battenberg (Marquess of Milford Haven).
 10. Elizabeth, 1864-1918, X Grand Duke Sergius of Russia.
 11. Irene, 1866-1953, X Prince Henry of Prussia (see III(3)).
 12. Ernest, 1868-1937, Grand Duke of Hesse.
 13. Frederick William, 1870-1873.
 14. Alexandra, 1872-1918, X Nicholas II, Czar of Russia.
 15. Mary Victoria, 1874-1878.
 16. Christian Victor, 1867-1900.
 17. Albert, 1869-1931.
 18. Victoria, 1870-1948.
 19. Marie Louise, 1872-1956.
 20. Harold, 1876-1876.
 21. Alice, 1883... , X Earl of Athlone.
 22. Charles Edward, 1884-1954 Duke of Albany.
 23. Alexander, 1886— , Marquess of Carisbrooke.
 24. Victoria Eugenie, 1887— , X Alfonso XIII of Spain.
- IV**
1. Feodora Maria, 1879-1898, X Henry XXX of Reuss.
 2. George II, 1890-1947, King of Greece.
 3. Alexander, 1893-1920, King of Greece.
 4. Helena, 1896— , X Carol II of Romania.
 5. Paul, 1901— , King of Greece.
 6. Erene, 1904— .
 7. Catherine, 1913— .
 8. Frederick William, 1893-1916, Prince of Hesse.
 9. Maximilian, 1894-1914.
 10. Philip, 1896— .
 11. Wolfgang, 1896— .
 12. Richard, 1901— .
 13. Christoph, 1901— .
 14. Alice, 1885— , X Prince Andrew of Greece.
 15. Louisa, 1889— , X King Gustav VI Adolf of Sweden.
 16. George, 1892-1938, Marquess of Milford Haven.
 17. Louis, Lord Mountbatten, 1900— .
 18. Waldemar, 1889-1845, Prince of Prussia.
 19. Sigismund, 1896-1827.
 20. Henry, 1900-1904.
 21. Olga, 1895-1918, Grand Duchess.
 22. Tatiana, 1897-1918, Grand Duchess.
 23. Maria, 1899-1918, Grand Duchess.
 24. Anastasia, 1901-1918, Grand Duchess.
 25. Alexis, 1904-1918, Czarevitch.
 26. May, 1906— , X Sir Henry Abel-Smith.
 27. Rupert, 1907-1928.
 28. Marie, 1899-1918, Grand Duchess.
 29. Alfonso, 1907-1939, Prince of Asturias, later Count of Covadonga.
 30. Jaime, 1908— .
 31. Beatrice, 1909— .
 32. Maria, 1911— .
 33. Juan, 1913— .
 34. Gonzalo, 1914-1934.
- V**
1. Michael, 1921— , King of Romania.
 2. Margarita, 1905— , X Godfrey of Hohenlohe-Langenburg.
 3. Theodora, 1906— , X Margrave of Baden.
 4. Cecilie, 1911-1937, X Grand Duke of Hesse.
 5. Sophie, 1914— , X Christopher of Hesse.
 6. Philip, 1921— , Duke of Edinburgh.