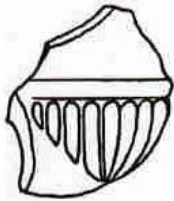


Palazzo Bonici Gardens. Sliema

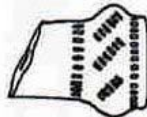
At present the site of a palace dated to the late 19th or early 20th century. The material comes from a surface scatter on the fields surrounding the Palazzo. However this surface scatter may have come from an earlier structure on the same site or with waste disposal material from Valletta.



PBG1. A stem fragment with a keel under the broken bowl. Buff and orange clay, poorly prepared. 10mm shank opening. Rouletted decoration where bowl meets keel. The keel feature begins in the late 17th to early 18th century and continues throughout the manufacture of *chibouks*.



PBG2. Fragment of bowl and rim. Terracotta. The bowl is gadrooned, a common decorative element said to resemble the poppy-seed head.



PBG3. Fragment of stem end in yellowish grey clay, rather worn. Shank opening 8mm, 4mm at break. Bands of vertical and **diagonal** rouletting around the termination.



PBG4. Stem fragment. Shank opening 8mm, 5mm at break. Yellowish grey clay. Roughly milled vertical and diagonal decoration around the termination.



PBG5. Stem fragment. Shank opening 9mm. Terracotta. Traces of rouletting around the stem end.



PBG. Two European stem fragments from same source.