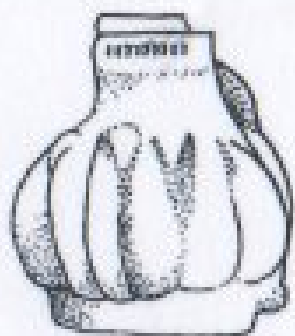
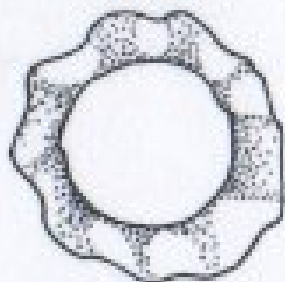


2 TOBACCO PIPES FROM LAZARETTO
CREEK, MALTA 2001



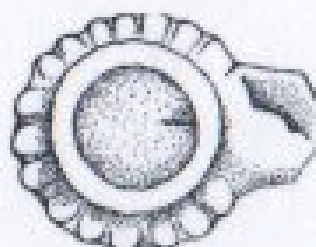
JG2



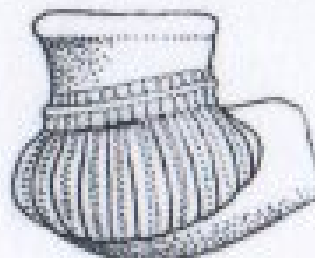
foot d. 1.8cms

surface find
Lazaretto creek 2001

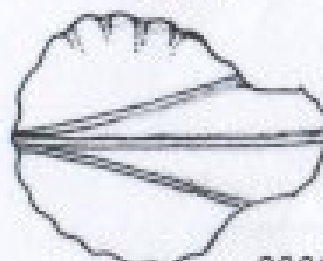
figure 5



bowl d. 3.35cms



JG1



2001
Surface find
Lazaretto creek

figure 4

2. TOBACCO PIPES: SURFACE FINDS FROM LAZARETTO CREEK, MARSAMXETT
(2001)⁶

JG1 (figure 4). Rim, bowl and broken shank. Dark brown clay. Flared rim with 2 horizontal bands of rouletting at the waist. The bowl has shallow gadrooned decoration. The keel is accentuated by scouring right, left and centre.

JG2 (figure 5). Bowl, broken rim, shank missing. Dark brown clay. Rim rouletted under its lip. Gadrooning on the bowl is interspersed with claw like decoration. Mould made with a flat circular base.⁷

Conclusion:

The fact that the above artefacts were random finds in an area of compulsory quarantine does little more than bear out the written evidence for travel and trade over a lengthy period. However it does add to what is already known,⁸ confirming Malta as a hub of activity, not only because its geographical position but also the ingenuity and determination of the inhabitants.

⁶ Private collection

⁷ For a similar gadrooned bowl and flat base see VTR/1994/113 in: Wood, J. (1998) 'Pipes from Malta: a short account of the tobacco pipes found in Dockyard Creek, Birgu'. *International Journal of Nautical Archaeology* 27.4, p 327.

⁸ See also: Wood, J. (2001) 'Tobacco pipes from Manoel Island, Malta'. *Mariner's Mirror* 87, 1, 83-88.