



**L-Università
ta' Malta**

MATRICULATION AND SECONDARY EDUCATION CERTIFICATE
EXAMINATIONS BOARD

**SECONDARY EDUCATION CERTIFICATE LEVEL
2026 MAIN SESSION**

SUBJECT:	Agribusiness
PAPER NUMBER:	Controlled – Unit 2
DATE:	5 th May 2025
DURATION:	10:00 a.m. to 11:35 a.m.

**THIS PAPER SHOULD BE RETURNED TO THE INVIGILATOR
AFTER THE EXAMINATION.**

Name of candidate _____

I.D. number _____

School _____

Class _____

Answer **ALL** questions in the space provided.

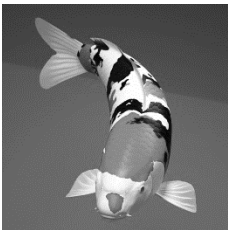


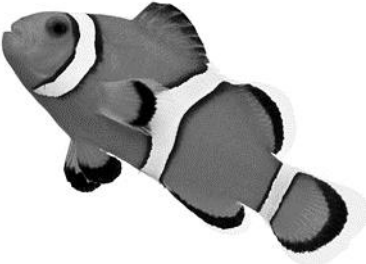
Scenario

- As the population grows and cities expand, countries and companies are always trying to improve their knowledge on the following topics found in this paper which are important to feed the world.
- Fish - Housing and breeding.
- Crops - Protected cultivation systems.
- Crops - Plant protection products.
- Crops - Effective plant propagation.

Question 1

K-1 (4 marks)

a. Match the **FOUR** fish species in Figure 1 to their respective habitat, by drawing a line between them.

Fish species	Habitat
<p style="text-align: center;">Koi</p> 	brackish
<p style="text-align: center;">Guppy</p> 	cold fresh water
<p style="text-align: center;">Angel fish</p> 	tropical planted fresh water
<p style="text-align: center;">Clown fish</p> 	marine tropical

(1)

Figure 1: Fish and their habitats
 (Source: <https://www.sera.de> & <https://www.bulkreefsupply.com/>)

b. Label the internal and external morphology of the fish indicated in Figure 2.

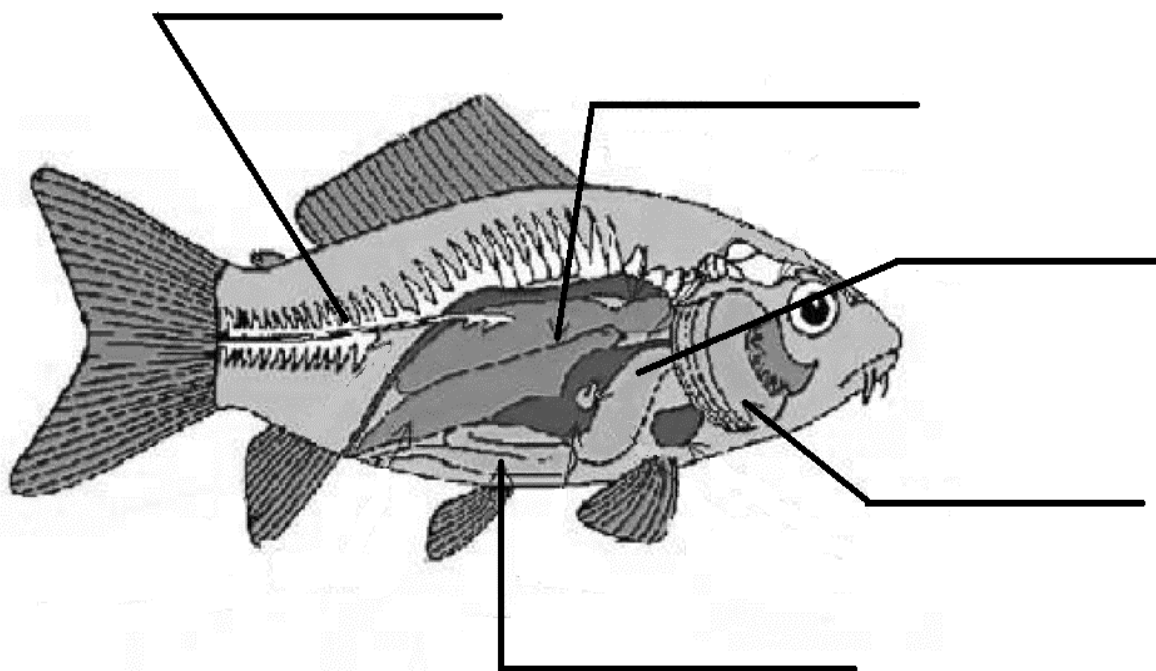
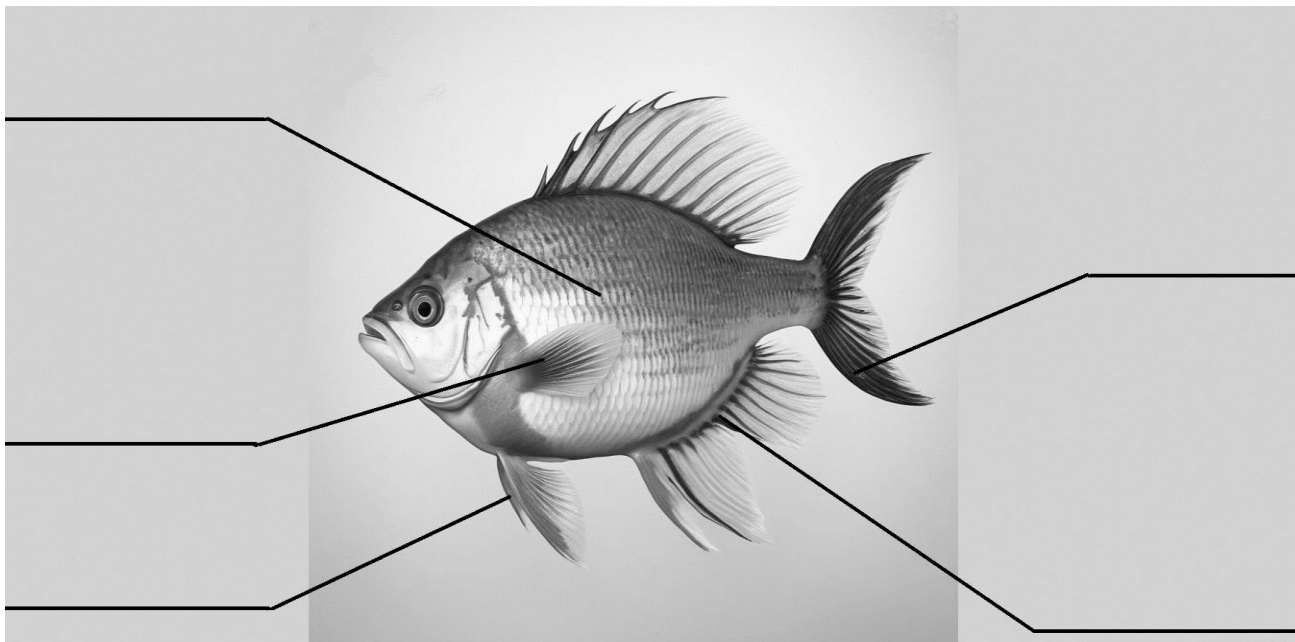


Figure 2: Internal and external morphology of a typical fish

(Sources: <http://www.openart.ai> & https://www.researchgate.net/figure/Internal-organs-of-fish_fig3_351599946) (1)

This question continues on next page.

b. Explain **TWO** benefits of a water change of a fish tank apart from to control water clarity.

Benefit 1: _____

_____ (1)

Benefit 2: _____

_____ (1)

c. Discuss the importance of having suitable substrate and rock in relation to fish health.

_____ (2)

Question 3

K-5 (4 marks)

a. List **TWO** processes by which water travels through soil.

Process 1: _____ (0.5)

Process 2: _____ (0.5)

This question continues on next page.

b. Describe the following **TWO** plant structures that are responsible for the intake and internal transport of water and soil nutrients.

Roots system: _____

_____ (0.5)

Xylem vessels: _____

_____ (0.5)

c. Outline the process by which water travels from soil to the atmosphere via transpiration in **FIVE** steps. The steps should be in order.

_____ (2)

Question 4

K-6 (4 marks)

a. Define 'photosynthesis'.

_____ (1)

b. Describe how the following **TWO** factors affect the rate of photosynthesis:

Light intensity: _____

_____ (0.5)

Carbon dioxide concentration: _____

_____ (0.5)

Respect pre-harvest time window: _____

_____ (0.5)

Check for compatibility issues when using chemical products: _____

_____ (0.5)

c. Explain the **FOUR** general principles of Integrated Pest Management (IPM).

_____ (2)

Question 7

K-8 (4 marks)

a. List **FOUR** factors that contribute towards natural product spoilage and decay.

Factor 1: _____ (0.25)

Factor 2: _____ (0.25)

Factor 3: _____ (0.25)

Factor 4: _____ (0.25)

This question continues on next page.

b. Outline the following **TWO** practices that slow down the process of natural product spoilage and decay:

Good hygiene: _____

_____ (0.5)

Suitable storage: _____

_____ (0.5)

c. Describe suitable packaging for the following **TWO** products, to avoid spoilage and decay:

Celery sticks	Strawberries
---------------	--------------

_____ (2)

Question 8

K-9 (4 marks)

a. Mention **TWO** types of germination.

Type 1: _____ (0.5)

Type 2: _____ (0.5)

b. Outline **TWO** conditions, apart from water availability, which are required for optimum propagation of plants.

_____ (1)

Blank Page