



**L-Università
ta' Malta**

MATRICULATION AND SECONDARY EDUCATION CERTIFICATE
EXAMINATIONS BOARD

**SECONDARY EDUCATION CERTIFICATE LEVEL
2025 MAIN SESSION**

SUBJECT:	Fashion and Textiles
PAPER NUMBER:	Controlled – Unit 2
DATE:	8 th May 2024
TIME:	10:00 a.m. to 11:35 a.m.

**THIS PAPER SHOULD BE RETURNED TO THE INVIGILATOR
AFTER THE EXAMINATION.**

Name of candidate _____

I.D. number _____

School _____

Class _____

Answer **ALL** questions in the space provided.

Scenario

- A group of young actors are preparing a new act based on William Shakespeare’s Macbeth.
- They are also making the costumes.
- As they are not knowledgeable about costume history, they prepared a fashion history timeline.

Question 1

K-1 (4 marks)

- a. List in order the following historic fashion periods. Include a number from 1 to 5 to indicate the order.

Table 1: Historic Fashion Periods


Fashion Periods	Correct Order
The Twentieth Century 1900-2000	
The Renaissance c. 1400 – 1800	
Baroque and Rococo c. 1600 – 1800	
The Ancient World c. 3000BC – 400AD	
The Nineteenth Century 1800 – 1899	

(1)

- b. Match the following styles to the **FOUR** historic fashion periods in the box below. (1)

Baroque and Rococo	The Middle Ages	The 20 th Century	The Ancient World
--------------------	-----------------	------------------------------	-------------------

Table 2: Styles in different fashion periods

	Style	Fashion Period
i.		
	<p>(Source: http://www.articlecats.com)</p>	

<p>ii.</p>	 <p>(Source: https://rheagupta1995.wordpress.com)</p>	
<p>iii.</p>	 <p>(Source: https://tincanmagazine.com)</p>	
<p>iv.</p>	 <p>(Source: https://www.tuppencehapenny.com)</p>	

This question continues on next page.

Table 1: Presentation Techniques

(a)	(b)
Presentation Technique 1: <hr/> <div style="text-align: right;">(0.5)</div>	Purpose of Technique 1: <hr/> <hr/> <hr/> <hr/> <hr/> <hr/> <hr/> <hr/> <hr/> <hr/> <div style="text-align: right;">(0.5)</div>
Presentation Technique 2: <hr/> <div style="text-align: right;">(0.5)</div>	Purpose of Technique 2: <hr/> <hr/> <hr/> <hr/> <hr/> <hr/> <hr/> <hr/> <hr/> <hr/> <div style="text-align: right;">(0.5)</div>

c. Outline **TWO** characteristics of any **ONE** presentation technique named in Question 2a.

(2)

Please turn the page.

Question 3

K-3 (4 marks)

The actors will create their costumes according to their body shapes.

a. List the **FOUR** body shapes.

Body shape 1: _____ (0.25)

Body shape 2: _____ (0.25)

Body shape 3: _____ (0.25)

Body shape 4: _____ (0.25)

b. Name **TWO** formal elements and **TWO** design principles used in fashion.

Formal elements:

Element 1: _____ (0.25)

Element 2: _____ (0.25)

Design Principles:

Principle 1: _____ (0.25)

Principle 2: _____ (0.25)

c. Describe any **TWO** formal elements used in fashion concerning the body shape picture shown in the following figure.



(Source: <https://alldresses.com.au>)

(2)

Question 4

K-6 (4 marks)

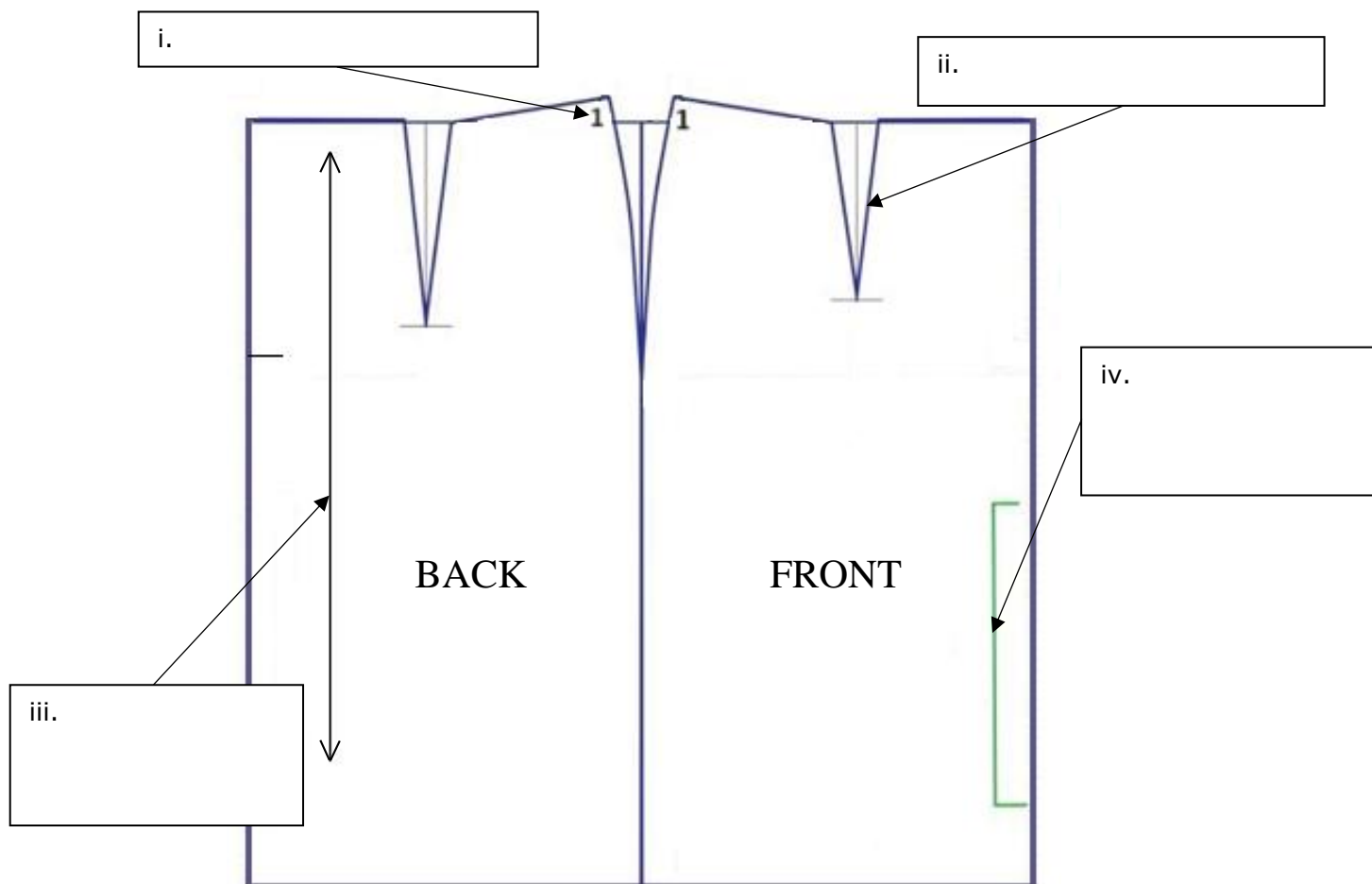
The actors have to learn how to create costume patterns and flat sketches to design and construct their costumes.

a. List **TWO** types of fashion patterns.

Type of Fashion Pattern 1: _____ (0.5)

Type of Fashion Pattern 2: _____ (0.5)

b. Identify **FOUR** different fashion pattern markings found on the pattern below. (1)



(Source: <https://www.dresspatternmaking.com>)

This question continues on next page.

Back Length: _____

_____ (1)

b. Explain **TWO** reasons why pattern markings are important.

Reason 1: _____

_____ (1)

Reason 2: _____

_____ (1)

c. Discuss the **FOUR** steps in the correct order of procedure that needs to be adopted before using a flat pattern.

This question continues on next page.

(2)

Question 6

C-4 (6 marks)

a. Indicate **TWO** pattern pieces required for each of the following garments in Figure 1 and 2.

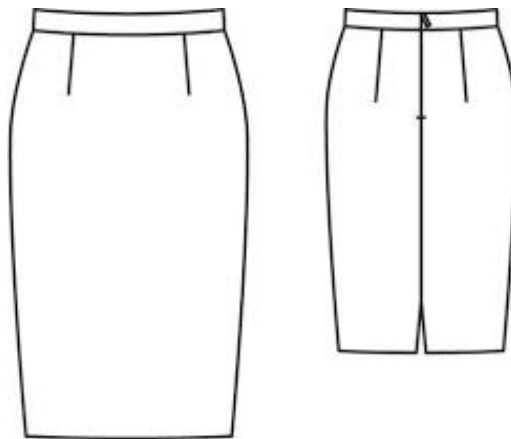


Figure 1: Garment A
(Source: <https://in.pinterest.com>)

Garment A shown in Figure 1: Pattern piece 1 - _____ (0.5)

Pattern piece 2 - _____ (0.5)

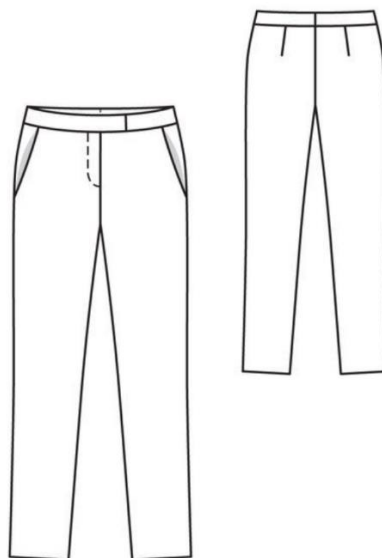


Figure 2: Garment B
(Source: <https://in.pinterest.com>)

Garment B shown in Figure 2: Pattern piece 1 - _____ (0.5)

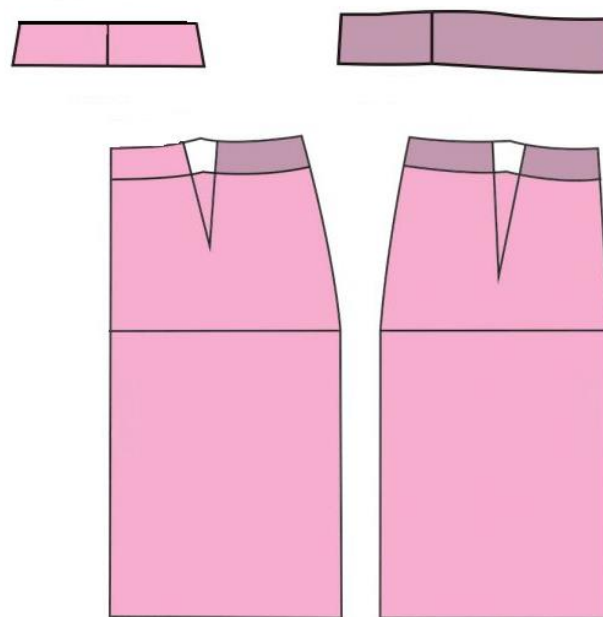
Pattern piece 2 - _____ (0.5)

b. Estimate the length of fabric required for Garment A in Question 6a. Keep in mind that the fabric is plain and without a nap.

Fabric width I – 90cm: _____ (1)

Fabric width II – 150cm: _____ (1)

c. Justify the fabric length requirements for the garment shown in the figure below having a one way design.



(Source: <https://shoponline.bestsalecheap2023.com>)

(<https://lubenicevs.xyz>)

Justification of fabric length I – 90cm: _____

(1)

This question continues on next page.

Justification of fabric length II – 150cm: _____

_____ (1)

Question 7

K-8 (4 marks)

a. Identify the **FOUR** different styles of lower body outer garments provided in Table 2. (1)

Table 2: Styles of lower body outer garments

 <p>(Source: https://rebecca-page.com)</p>	<p>_____ (0.25)</p>
 <p>(Source: https://www2.hm.com)</p>	<p>_____ (0.25)</p>



(Source: <https://www.joebrowns.co.uk>)

_____ (0.25)



(Source: <https://clothesbylockerroom.com>)

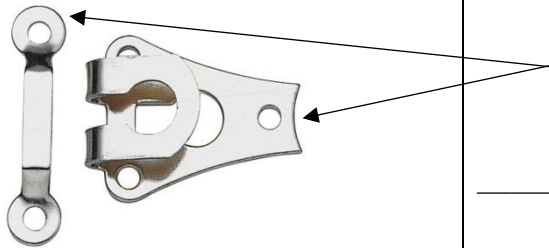
_____ (0.25)

This question continues on next page.

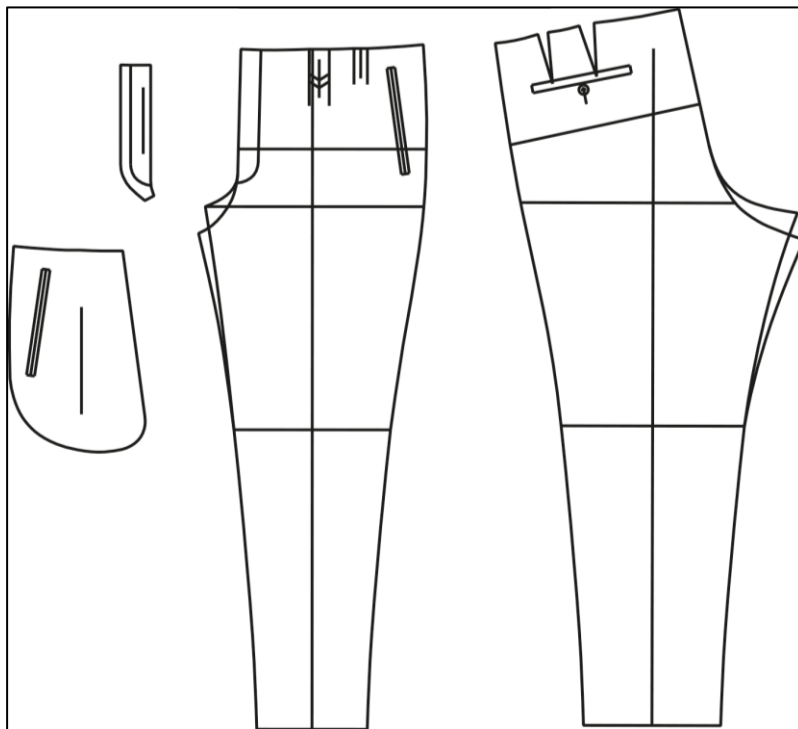
b. Label **FOUR** different fashion features found on the lower body garments shown in Table 3 below.

Table 3: Fashion Features

	Lower body garments	Label
i.	 <p>(Source: https://www.craftsy.com)</p>	<hr/> <p>(0.25)</p>
ii.	 <p>(Source: https://weallsew.com)</p>	<hr/> <p>(0.25)</p>
iii.	 <p>(Source: https://workroomsocial.com)</p>	<hr/> <p>(0.25)</p>

<p>iv.</p>	 <p>(Source: https://alfag.co.uk)</p>	<p>(0.25)</p>
------------	--	---------------

c. Name the style and **TWO** fashion features on the flat pattern of a lower body outer garment, apart from button and buttonhole.



(Source: <https://www.muellerundsohn.com>)

Style: _____ (1)

Fashion feature 1: _____ (0.5)

Fashion feature 2: _____ (0.5)

Please turn the page.

Question 8

C-5 (6 marks)

a. Explain why the following styles of lower body garments are appropriate for the specific occasion given below.



(Source: <https://www.etsy.com>)

Style A



(Source: [//dress-magazine.com/](http://dress-magazine.com/))

Style B

Style A: Evening Circle Skirt

Occasion: Summer Wedding (attend as a guest)

(1)

Style B: Palazzo Pants

Occasion: Evening Birthday Party in July

(1)

b. Justify how the following fashion features enhance the following styles. (Justify **ONE** feature for **EACH** style).

Button and Buttonhole in a Straight Leg Pants:



(1)

(Source:
<https://www.theiconic.com.au>)

Press Stud in A-line Mini Skirt:



(1)

(Source:
<https://www.lexception.com>)

This question continues on next page.

Blank Page

Blank Page